

APP CRS	Rwy Idg	<b>11089</b>
<b>191°</b>	TDZE	<b>272</b>
	Apt Elev	<b>312</b>

# RNAV (RNP) Z RWY 19C

WASHINGTON DULLES INTL (IAD)

RNP AR APCH - GPS.

▼ For uncompensated Baro-VNAV systems, procedure NA below -13°C or above 54°C. Simultaneous approach authorized. For inop ALS, increase RNP 0.11 visibility all Cats to RVR 4500, and RNP 0.25 visibility all Cats to RVR 5500.

ALSF-2



MISSED APPROACH: Climb to 3000 direct MOOOV and hold.

POTOMAC APP CON	
<b>120.45</b>	<b>306.925</b> (241°-330°)
<b>128.525</b>	<b>306.925</b> (091°-240°)
<b>126.1</b>	<b>338.25</b> (331°-090°)

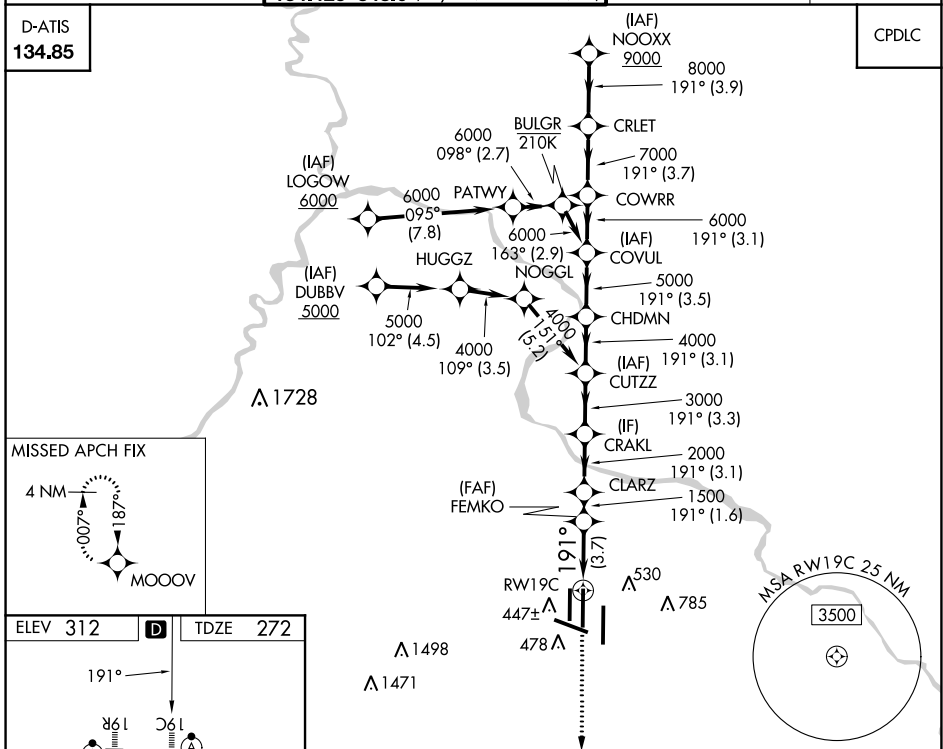
DULLES TOWER	
<b>120.1</b>	<b>317.8</b> (Rwys 1R/19L)
<b>120.25</b>	<b>348.6</b> (Rwys 1C/19C)
<b>134.425</b>	<b>348.6</b> (Rwys 1L/19R and 12/30)

GND CON	
<b>121.9</b>	<b>317.8</b> (EAST)
<b>121.625</b>	<b>348.6</b> (WEST)

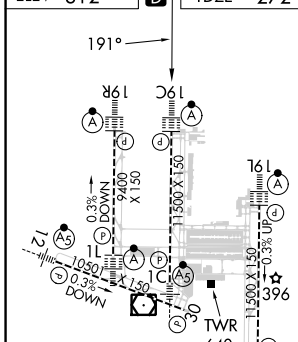
CLNC DEL	
<b>135.7</b>	<b>317.8</b>

D-ATIS
<b>134.85</b>

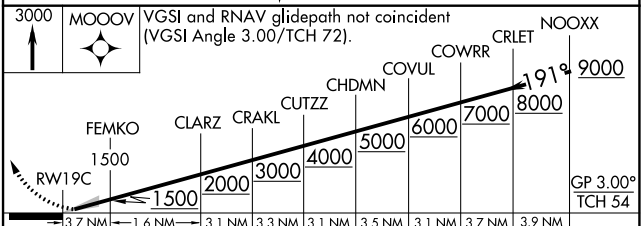
CPDLC



ELEV	<b>312</b>	D	TDZE	<b>272</b>
------	------------	---	------	------------



TDZ/CL Rwys 1C, 1L, 1R, 12, 19C and 19R  
REIL Rwy 30  
HIRL all Rwys



CATEGORY	A	B	C	D
RNP 0.11 DA		554/24	282 (300-½)	
RNP 0.25 DA		624/30	352 (400-¾)	
RNP 0.30 DA		702/40	430 (400-¾)	

### AUTHORIZATION REQUIRED

NE-3, 31 OCT 2024 to 28 NOV 2024

NE-3, 31 OCT 2024 to 28 NOV 2024