

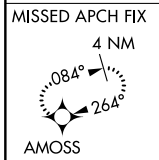
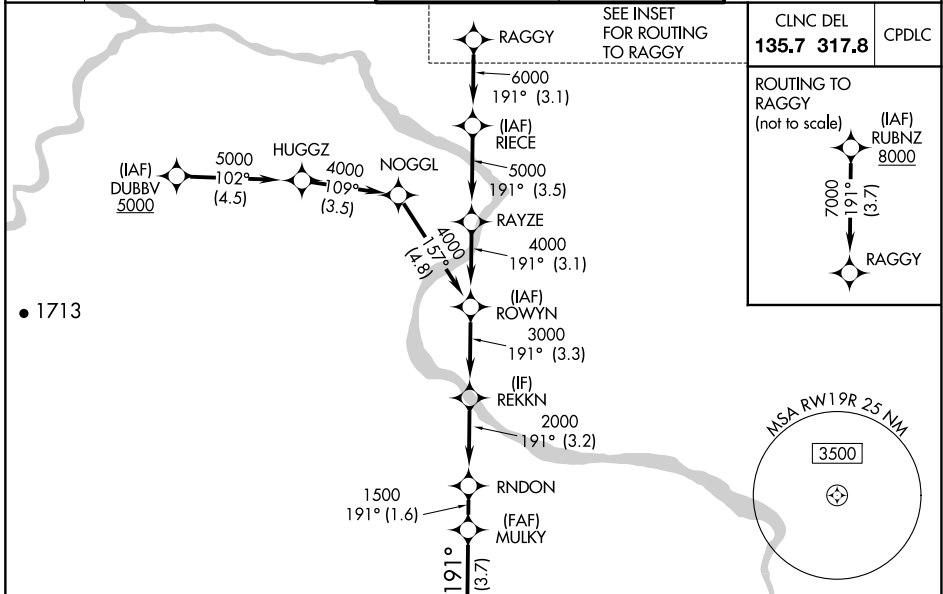
APP CRS	Rwy Idg	<b>9400</b>
<b>191°</b>	TDZE	<b>278</b>
	Apt Elev	<b>312</b>

# RNAV (RNP) Z RWY 19R

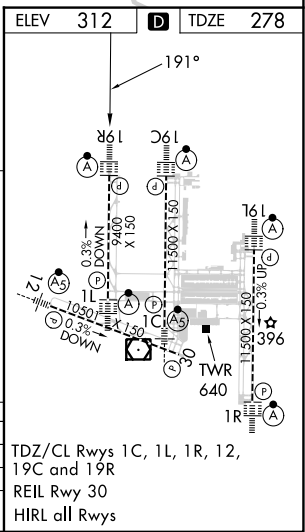
WASHINGTON DULLES INTL (IAD)

RNP AR APCH - GPS.	ALSIF-2	MISSED APPROACH: Climb to 800 then climbing right turn to 3000 direct AMOSS and hold.
<p>▼ For uncompensated Baro-VNAV systems, procedure NA below -13°C or above 54°C. Simultaneous approach authorized. For inop ALS, increase RNP 0.30 visibility all Cats to RVR 5500.</p>		

D-ATIS	POTOMAC APP CON	DULLES TOWER	GND CON
<b>134.85</b>	<b>120.45 306.925</b> (241°-330°)	<b>120.1 317.8</b> (Rwy 1R/19L)	<b>121.9 317.8</b> (EAST)
	<b>128.525 306.925</b> (091°-240°)	<b>120.25 348.6</b> (Rwy 1C/19C)	<b>121.625 348.6</b> (WEST)
	<b>126.1 338.25</b> (331°-090°)	<b>134.425 348.6</b> (Rwy 1L/19R and 12/30)	



800	3000	AMOSS	VGSI and RNAV glidepath not coincident (VGSI Angle 3.00/TCH 70).					RAGGY	RUBNZ	
			MULKY	RNDON	RAYZE	REKKN	ROWYN	RAYZE	RIECE	8000
			1500	2000	3000	4000	5000	6000	7000	191°
			3.7 NM	1.6 NM	3.2 NM	3.3 NM	3.1 NM	3.5 NM	3.1 NM	3.7 NM
CATEGORY	A		B			C		D		
RNP 0.10 DA	608/26		330 (300-½)							
RNP 0.30 DA	658/35		380 (400-¾)							
<b>AUTHORIZATION REQUIRED</b>										



NE-3, 31 OCT 2024 to 28 NOV 2024

NE-3, 31 OCT 2024 to 28 NOV 2024