

SAN CLEMENTE ISLAND, CALIFORNIA

TACAN Y RWY 24

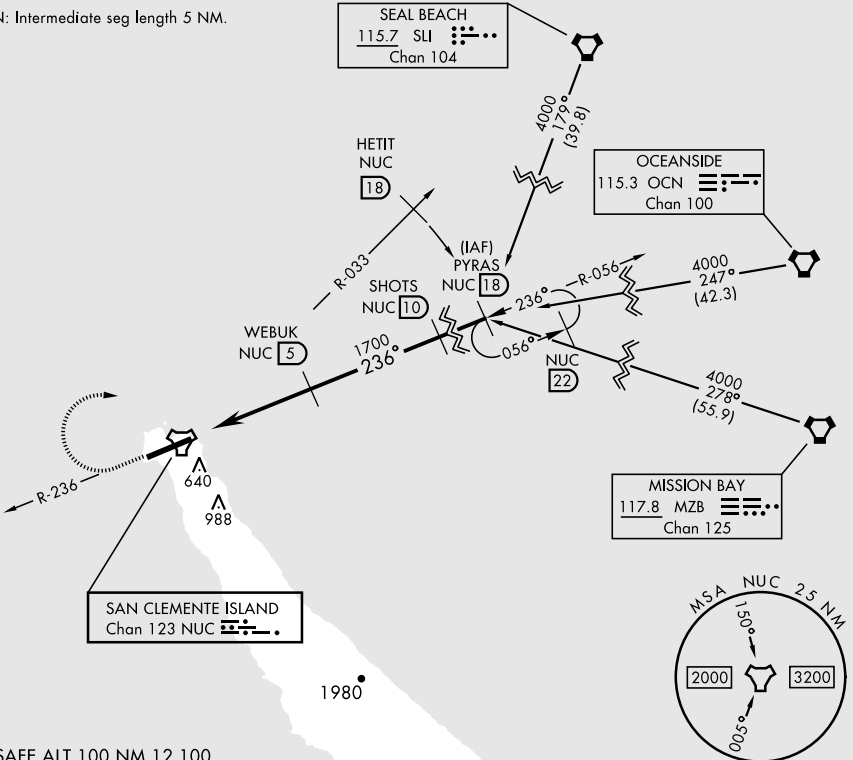
TACAN NUC Chan 123	APCH CRS 236°	Rwy ldg TDZE Arprt Elev 9301 184 184
------------------------------	-------------------------	--------------------------------------------------------------------------

[USN]
 SAN CLEMENTE ISLAND NALF (FREDERICK SHERMAN FLD) (KNUC)

▼ * Circling not authorized S of Rwy 6-24.
 MISSED APPROACH: Climb to 1500 via NUC TACAN R-236 then climbing right turn to 4000 via NUC R-033 to HETIT. Then arc NE of NUC TACAN via the 18 DME arc to PYRAS and hold.

ATIS ★ 268.6	SAN CLEMENTE APP CON 127.05 292.15	SAN CLEMENTE ISLAND TOWER ★ 126.75 278.8	GND CON 0 119.55 251.05	ASR/PAR
------------------------	----------------------------------------------	----------------------------------------------------	-----------------------------------	---------

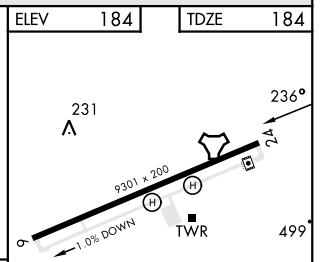
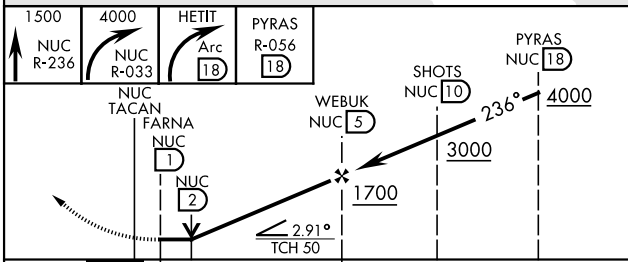
CAUTION: Intermediate seg length 5 NM.



SW-3, 31 OCT 2024 to 28 NOV 2024

SW-3, 31 OCT 2024 to 28 NOV 2024

EMERG SAFE ALT 100 NM 12,100



CATEGORY	A	B	C	D
S-24	780-1 596 (600-1)		780-1¾ 596 (600-1¾)	
CIRCLING*	780-1 596 (600-1)		780-1¾ 596 (600-1¾)	780-2 596 (600-2)

ELEV 184 TDZE 184
 REIL Rwy 6
 REIL Rwy 24
 HIRL Rwy 6-24

SAN CLEMENTE ISLAND, CALIFORNIA
 Orig 24FEB22

SAN CLEMENTE ISLAND NALF (FREDERICK SHERMAN FLD) (KNUC)
 33°01'N-118°35'W

TACAN Y RWY 24