

WAAS CH <b>69240</b> <b>W04A</b>	APP CRS <b>038°</b>	Rwy Idg TDZE Apt Elev	<b>9207</b> <b>4150</b> <b>4200</b>
--	------------------------	-----------------------------	---

# RNAV (GPS) RWY 4

ALAMOGORDO-WHITE SANDS RGNL (A.I.M)

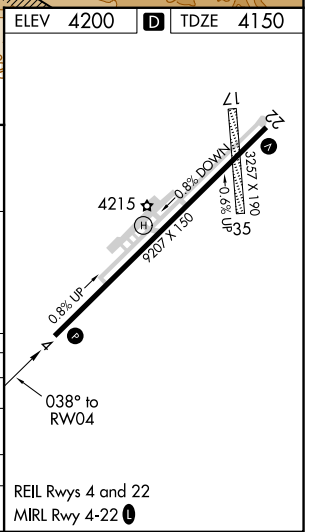
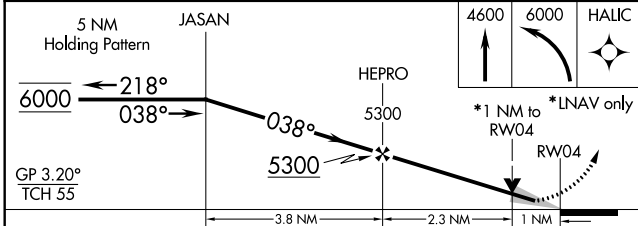
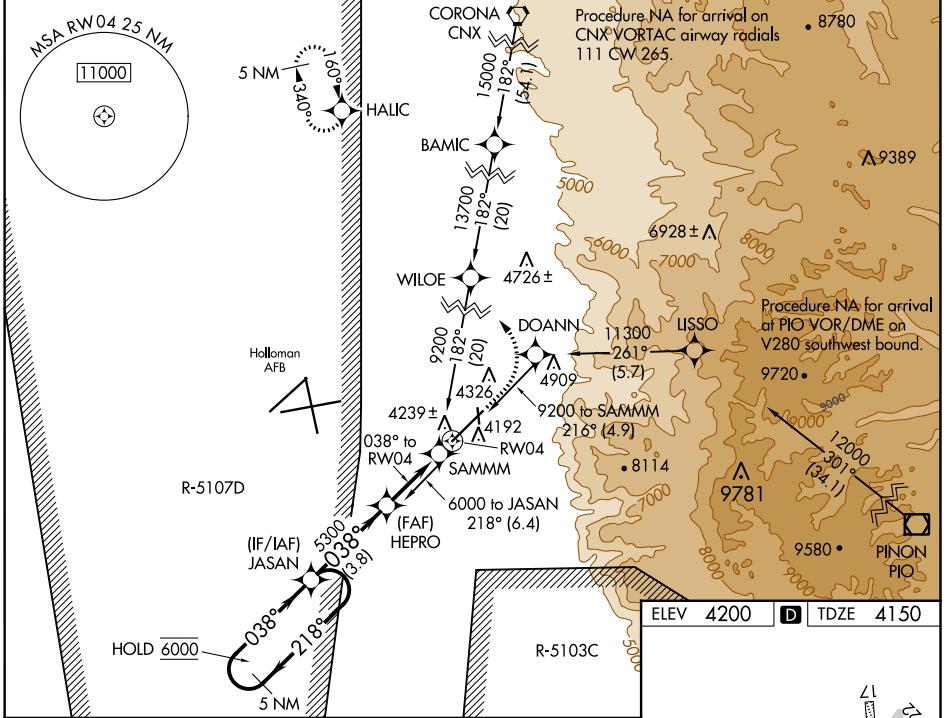
RNP APCH.

▼ Circling NA to Rwy 17 and 35. Circling NA for Cats C and D southeast of Rwy 4-22.

▲ For uncompensated Baro-VNAV systems, LNAV/VNAV NA below -23°C or above 54°C. Civil aircraft require ATC clearance prior to entering Restricted Area 5107D.

MISSED APPROACH: Climb to 4600 then climbing left turn to 6000 direct HALIC and hold.

AWOS-3 <b>127.825</b>	HOLLOMAN APP CON * <b>120.6 269.225</b>	UNICOM <b>122.8 (CTAF) 0</b>
--------------------------	--	---------------------------------



CATEGORY	A	B	C	D
LPV DA		4400-1	250 (200-1)	
LNAV/VNAV DA		4420-1	270 (300-1)	
LNAV MDA		4500-1	350 (300-1)	
<b>C</b> CIRCLING	4760-1 560 (600-1)	4880-1 680 (700-1)	4960-2¼ 760 (800-2¼)	4960-2½ 760 (800-2½)

SW-1, 31 OCT 2024 to 28 NOV 2024

SW-1, 31 OCT 2024 to 28 NOV 2024