

MHZ VORTAC 113.2 Chan 79	APP CRS 175°	Rwy ldg 8500 TDZE 320 Apt Elev 346
--	------------------------	---

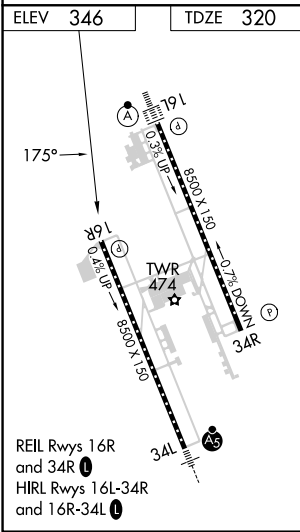
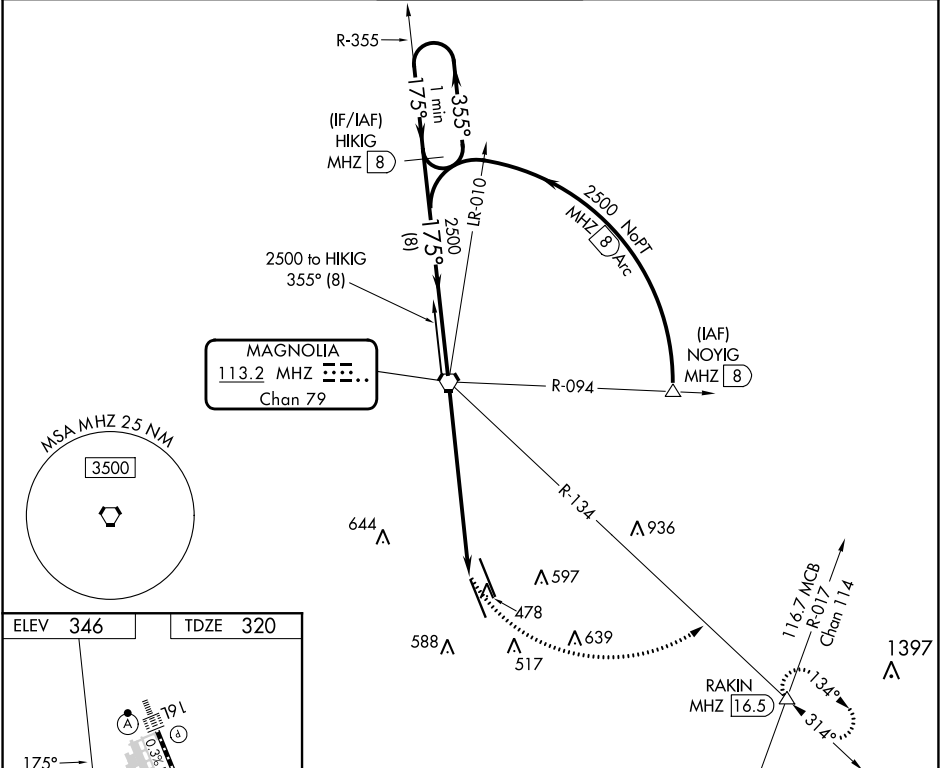
VOR/DME or TACAN RWY 16R

JACKSON-MEDGAR WILEY EVERS INTL (JAN)

⚠ VDP NA with Hawkins fld altimeter setting. When local altimeter setting not received, use Hawkins fld altimeter setting and increase all MDA 20 feet; increase S-16R Cats C/D/E visibility 1/8 mile. Circling NA for Cat E SW of Rwy 16R-34L. Helicopter visibility reduction below 3/4 SM NA.

MISSED APPROACH: Climbing left turn to 3000 on heading 103° and MHZ VORTAC R-134 to RAKIN INT/ MHZ 16.5 DME and hold.

ATIS 121.05	JACKSON APP CON ★ 123.9 317.7	JACKSON TOWER ★ 120.9 (CTAF) 352.0	GND CON 121.7 348.6	UNICOM 122.95
-----------------------	---	--	-------------------------------	-------------------------



One Minute Holding Pattern	VGSI and descent angles not coincident (VGSI Angle 3.00/TCH 80).		3000	RAKIN MHZ R-134 △	
			hdg 103°		
	HIKIG MHZ [8]	MHZ VORTAC	MHZ [5.6]	MHZ [7.1]	
	2500 ← 355°	175° →	2500		
			2.83° TCH 55		
	8 NM		5.5 NM	1.6	
CATEGORY	A	B	C	D	E
S-16R	880-1	560 (600-1)	880-1 1/2	560 (600-1 1/2)	
C CIRCLING	880-1 534 (600-1)	900-1 554 (600-1)	900-1 1/2 554 (600-1 1/2)	960-2 614 (700-2)	1040-2 1/2 694 (700-2 1/2)

SC-4, 31 OCT 2024 to 28 NOV 2024

SC-4, 31 OCT 2024 to 28 NOV 2024