

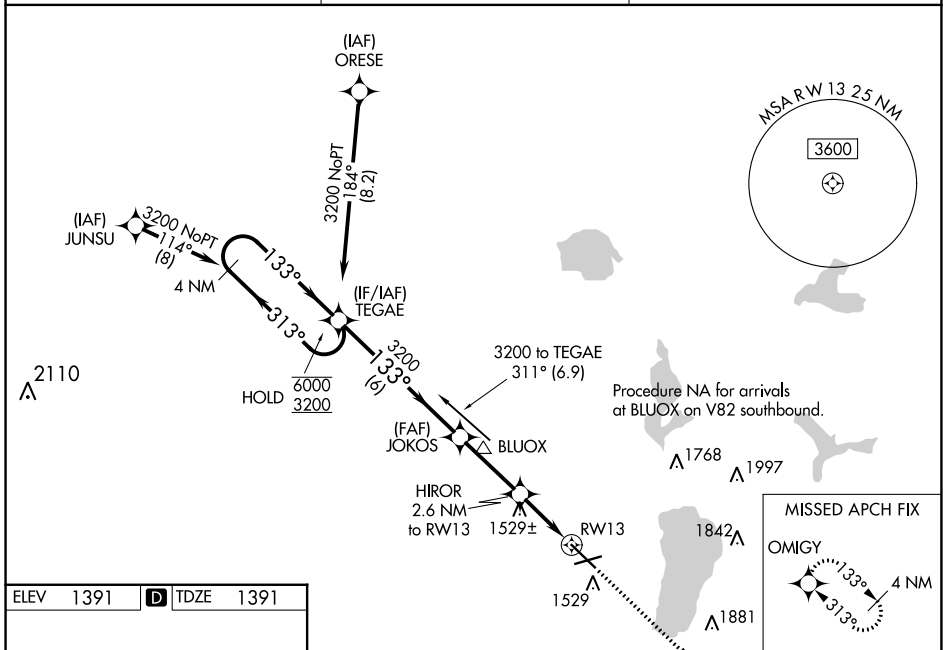
WAAS CH 93636 W13A	APP CRS 133°	Rwy Idg TDZE Apt Elev	7002 1391 1391
--	------------------------	-----------------------------	---

RNAV (GPS) RWY 13

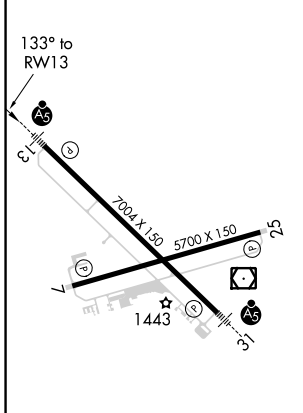
BEMIDJI RGNL (BJI)

RNP APCH.	MALSRR	MISSED APPROACH: Climb to 3200 direct OMIGY and hold.
<p>For uncompensated Baro-VNAV systems, LNAV/VNAV NA below -17°C or above 54°C. For inop ALS increase LNAV/VNAV visibility all Cats to 7/8 SM, increase LNAV Cats A and B visibility to 1 SM and Cats C and D visibility to 1/8 SM.</p>		

AWOS-3 119.275	MINNEAPOLIS CENTER 134.75 251.1	UNICOM 122.8 (CTAF) 0
--------------------------	---	---------------------------------



ELEV 1391	D TDZE 1391
-----------	--------------------



- HIRL Rwy 13-31
- MIRL Rwy 7-25
- REIL Rws 7 and 25

	4 NM Holding Pattern	TEGAE	JOKOS	HIROR 2.6 NM to RWY 13	3200	OMIGY
	6000 ← 313°	3200 → 133°	3200	*2280	*1.1 NM to RWY 13	*LNAV only.
	GP 3.00° TCH 45	6 NM	2.9 NM	1.5 NM	1.1	
CATEGORY	A	B	C	D		
LPV DA		1648-3/4	257 (300-3/4)			
LNAV/VNAV DA		1680-3/4	289 (300-3/4)			
LNAV MDA		1780-3/4	389 (400-3/4)			
C CIRCLING	1840-1 449 (500-1)	1860-1 469 (500-1)	1860-1 1/2 469 (500-1 1/2)	1960-2 569 (600-2)		

NC-1, 31 OCT 2024 to 28 NOV 2024

NC-1, 31 OCT 2024 to 28 NOV 2024