

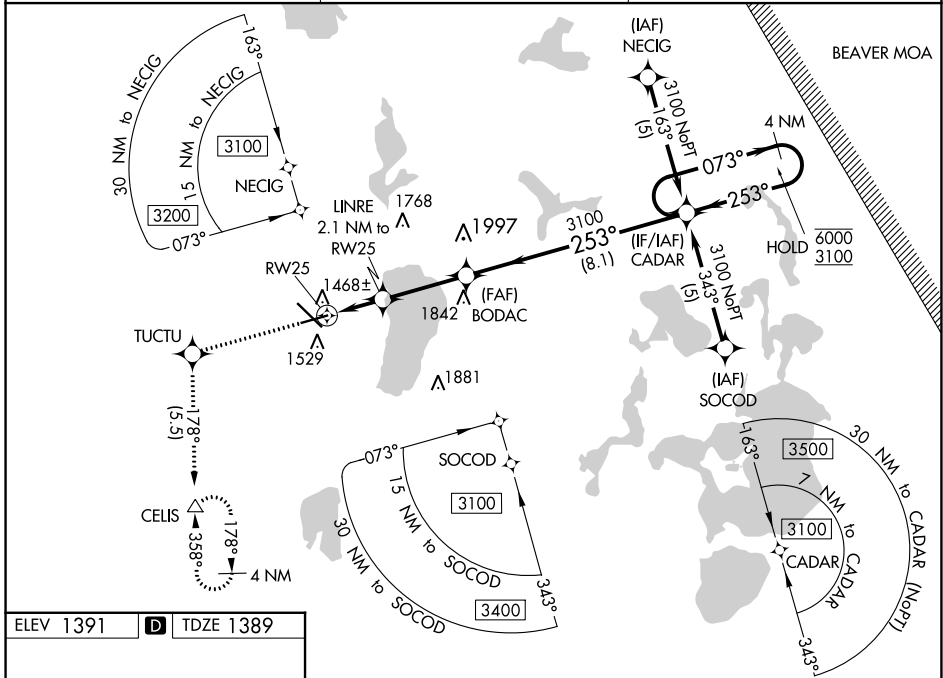
WAAS CH <b>65917</b> <b>W25A</b>	APP CRS <b>253°</b>	Rwy Idg TDZE <b>1389</b> Apt Elev <b>1391</b>
--	------------------------	---

# RNAV (GPS) RWY 25

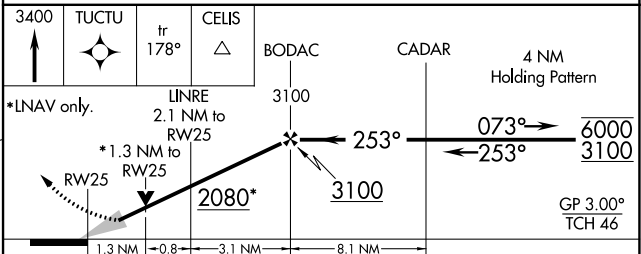
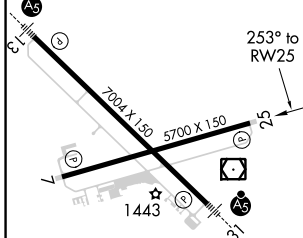
BEMIDJI RGNL (BJI)

RNP APCH.	MISSED APPROACH: Climb to 3400 direct TUCTU and on track 178° to CEUS and hold.
For uncompensated Baro-VNAV systems, LNAV/VNAV NA below -17°C or above 46°C.	

AWOS-3 <b>119.275</b>	MINNEAPOLIS CENTER <b>134.75 251.1</b>	UNICOM <b>122.8 (CTAF) 0</b>
--------------------------	---	---------------------------------



ELEV 1391	<b>D</b>	TDZE 1389
-----------	----------	-----------



CATEGORY	A	B	C	D
LPV DA		1589-3/4	200 (200-3/4)	
LNAV/VNAV DA		1752-1/4	363 (400-1/4)	
LNAV MDA	1840-1	451 (500-1)	1840-1 3/8 451 (500-1 3/8)	1840-1 1/2 451 (500-1 1/2)
<b>C</b> CIRCLING	1840-1 449 (500-1)	1860-1 469 (500-1)	1860-1 1/2 469 (500-1 1/2)	1960-2 569 (600-2)

HIRL Rwy 13-31 **0**  
MIRL Rwy 7-25 **0**  
REL Rwy 7 and 25 **0**

NC-1, 31 OCT 2024 to 28 NOV 2024

NC-1, 31 OCT 2024 to 28 NOV 2024