

# COPTER RNAV (GPS) RWY 17

APCH CRS	Rwy Idg	476
176°	TDZE	318
	Arpt Elev	318

AL-5183 [USA]

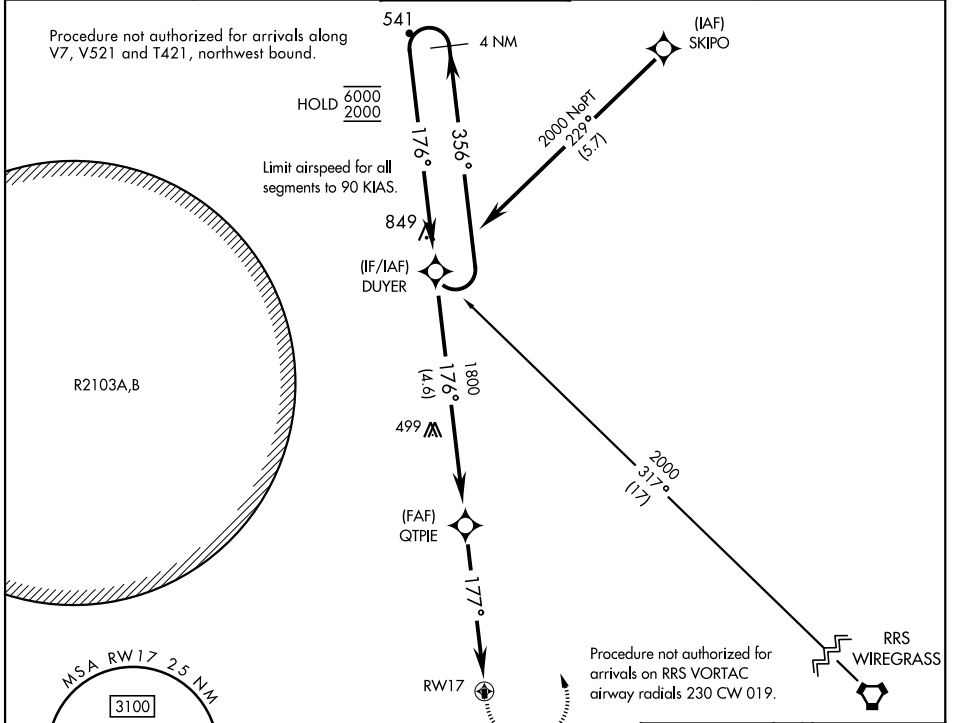
HANCHEY AHP (STRIP) (KHEY)

RNP APCH - GPS

**▼** Use CAIRNS altimeter setting, when not received,  
**▲** use LOWE altimeter setting.

MISSED APPROACH: Climbing left turn to 2000 direct DUYER and hold.

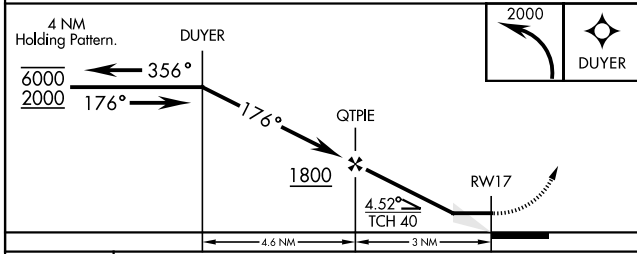
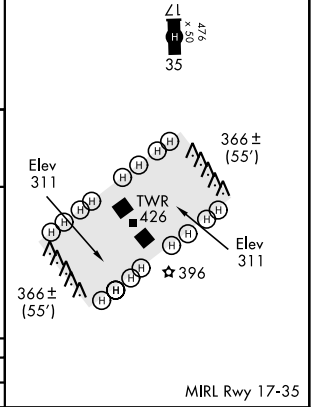
ATIS ★	CAIRNS APP CON	TOWER ★	GND CON	CAIRNS CLNC DEL
141.375	125.4 327.125	140.5 387.85	142.55 225.575	118.075 380.1



SE-4, 31 OCT 2024 to 28 NOV 2024

SE-4, 31 OCT 2024 to 28 NOV 2024

ELEV 318	TDZE 318
----------	----------



CATEGORY	COPTER	
LNAV MDA	900-1/2	582 (600-1/2)

# COPTER RNAV (GPS) RWY 17

MIRL Rwy 17-35