


WAAS CH <b>86713</b> <b>W26B</b>	APP CRS <b>267°</b>	Rwy Idg <b>10001</b> TDZE <b>790</b> Apt Elev <b>794</b>
--	------------------------	--

# RNAV (GPS) RWY 26L

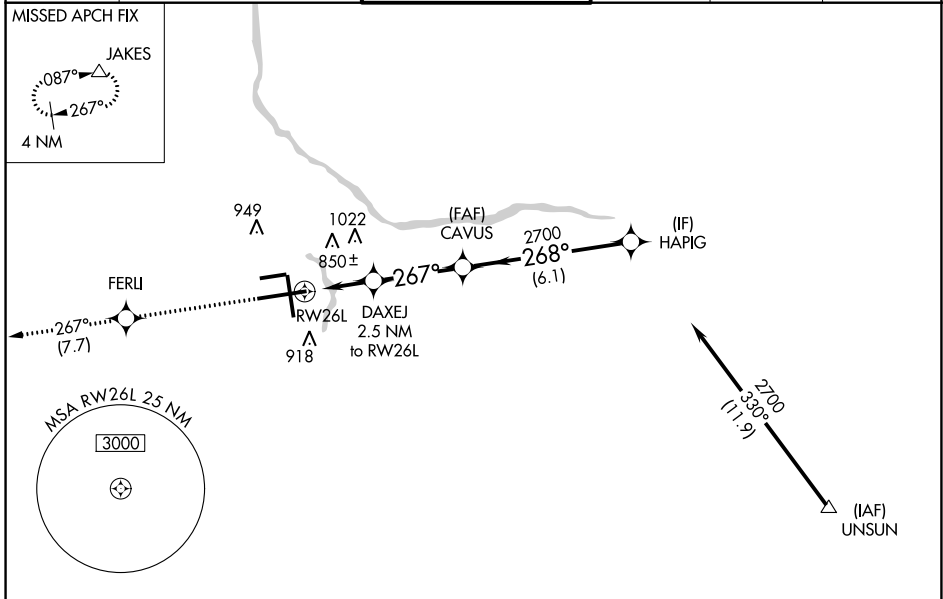
GERALD R FORD INTL (G.R.R)

**▽** For uncompensated Baro-VNAV systems, LNAV/VNAV NA below -16°C (4°F) or above 54°C (130°F). DME/DME RNP-0.3 NA. For inoperative ALS, increase LNAV/VNAV Cat D visibility to RVR 5000.  
**\*\* RVR 1800 authorized with use of FD or AP or HUD to DA.**

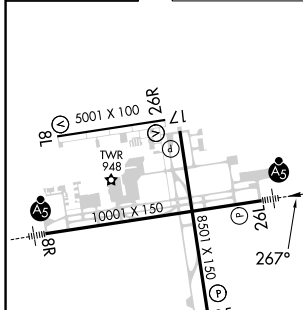
**MALSR** 




**MISSED APPROACH:**  
 Climb to 2700 direct FERLI and track 267° to JAKES and hold.

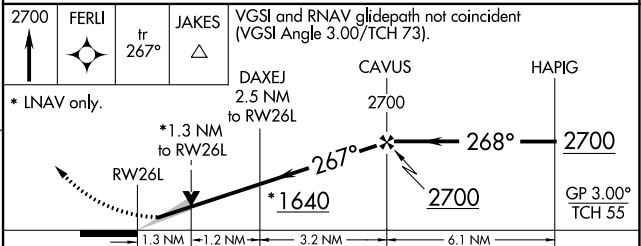
ATIS <b>118.725</b>	GREAT LAKES APP CON * <b>128.4 257.6</b>	GRAND RAPIDS TOWER * <b>135.65 (CTAF) 339.8</b>	GND CON <b>121.8</b>	CLNC DEL <b>119.3</b>	UNICOM <b>122.95</b>
------------------------	---	--	-------------------------	--------------------------	-------------------------



ELEV 794	<b>D</b>	TDZE 790
----------	----------	----------



MIRL Rwy 8L-26R   
 REIL Rwy 8L, 17 and 26R   
 HIRL Rwy 8R-26L and 17-35 



CATEGORY	A	B	C	D
LPV DA **	990/24 200 (200-½)			
LNAV/VNAV DA	1114/24 324 (400-½)		1114/40 324 (400-¾)	
LNAV MDA	1280/24 490 (500-½)	1280/40 490 (500-¾)	1280/50 490 (500-1)	1114/40 324 (400-¾)
<b>C</b> CIRCLING	1280-1 486 (500-1)	1340-1½ 546 (600-1½)	1360-2 566 (600-2)	

EC-1, 31 OCT 2024 to 28 NOV 2024

EC-1, 31 OCT 2024 to 28 NOV 2024