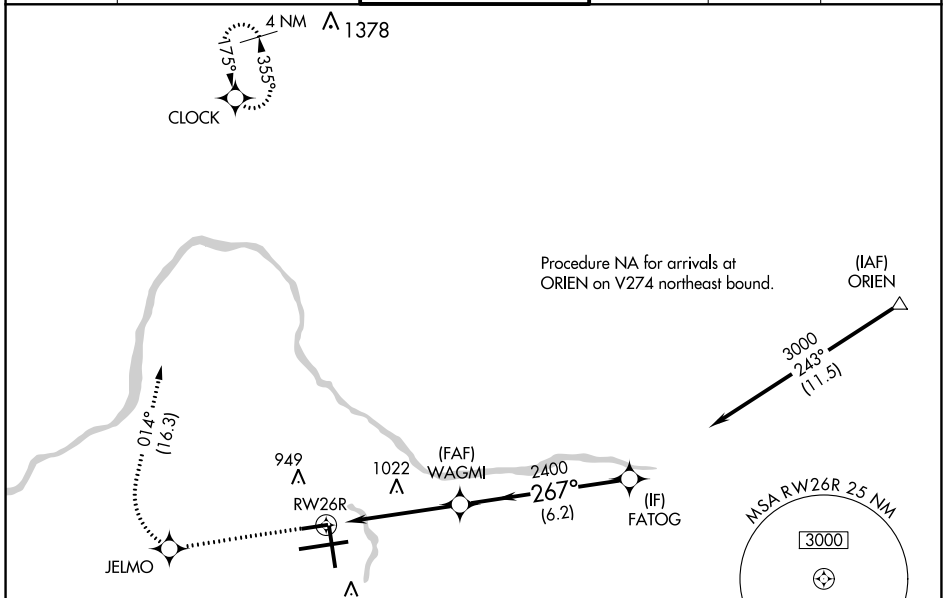


WAAS CH <b>82413</b> <b>W26A</b>	APP CRS <b>267°</b>	Rwy Idg <b>5001</b> TDZE <b>787</b> Apt Elev <b>794</b>
--	------------------------	---

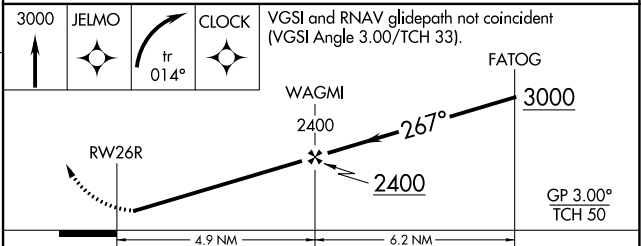
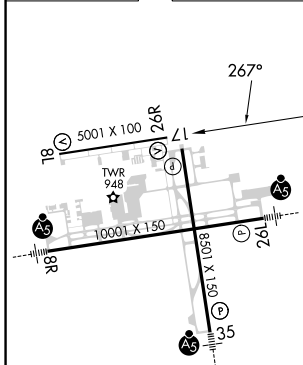
# RNAV (GPS) RWY 26R

GERALD R FORD INTL (G.R.R.)

RNP APCH.		MISSED APPROACH: Climb to 3000 direct JELMO and right turn on track 014° to CLOCK and hold.											
<p><b>▽</b> For uncompensated Baro-VNAV systems, LNAV/VNAV NA below -16°C or above 47°C. Rwy 26R helicopter visibility reduction below 1 SM NA.</p>		<b>ATIS</b> <b>118.725</b>		<b>GREAT LAKES APP CON *</b> <b>128.4 257.6</b>		<b>GRAND RAPIDS TOWER *</b> <b>135.65 (CTAF) 339.8</b>		<b>GND CON</b> <b>121.8</b>		<b>CLNC DEL</b> <b>119.3</b>		<b>UNICOM</b> <b>122.95</b>	



ELEV 794	<b>D</b>	TDZE 787
----------	----------	----------



CATEGORY	A	B	C	D
LPV DA	1037-1 250 (300-1)			
LNAV/VNAV DA	1216-1½ 429 (500-1½)			
LNAV MDA	1280-1 493 (500-1)	1280-1⅜ 493 (500-1⅜)	1280-1½ 493 (500-1½)	1280-1½ 493 (500-1½)
<b>C</b> CIRCLING	1280-1 486 (500-1)	1340-1½ 546 (600-1½)	1360-2 566 (600-2)	

MIRL Rwy 8L-26R **Ⓛ**  
REIL Rwy 8L, 17 and 26R **Ⓛ**  
HIRL Rwy 8R-26L and 17-35 **Ⓛ**

EC-1, 31 OCT 2024 to 28 NOV 2024

EC-1, 31 OCT 2024 to 28 NOV 2024