

APP CRS	Rwy Idg	<b>4855</b>
<b>179°</b>	TDZE	<b>912</b>
	Apt Elev	<b>912</b>

# RNAV (GPS) RWY 18

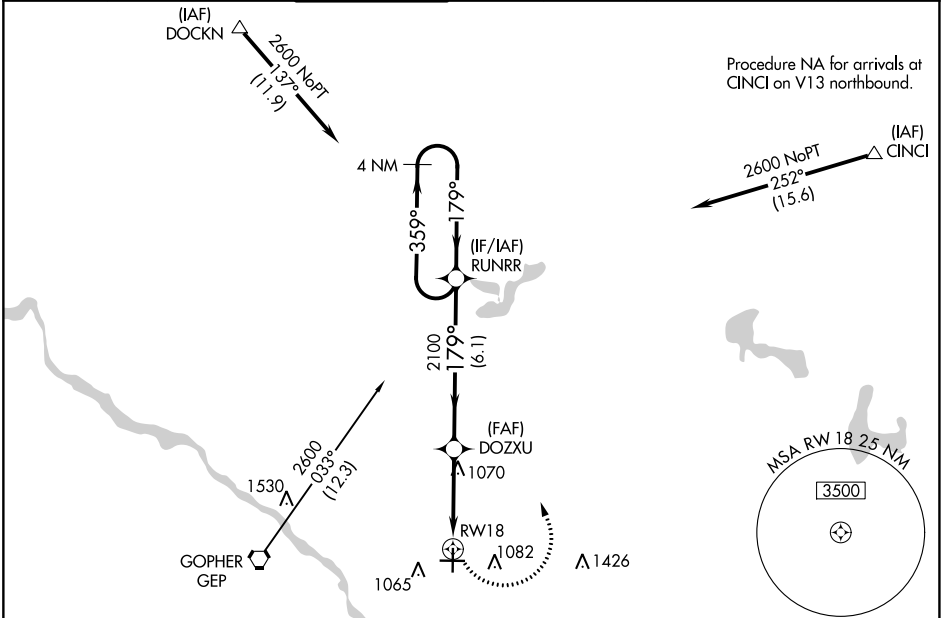
ANOKA COUNTY/BLAINE (JANES FLD) (A.N.E.)

RNP APCH - GPS.

⚠ When local altimeter setting not received, use Crystal altimeter setting and increase all MDA 40 feet and Circling Cat D visibility ¼ SM. VDP NA when using Crystal altimeter setting.

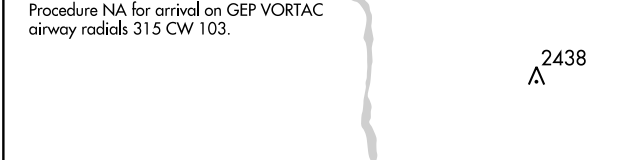
MISSED APPROACH: Climbing left turn to 2600 direct RUNRR and hold.

ATIS <b>120.625</b>	MINNEAPOLIS APP CON <b>126.5 335.65</b>	ANOKA TOWER* <b>132.4 (CTAF) 0</b>	GND CON <b>121.85</b>	CLNC DEL <b>121.3</b>	CLNC DEL <b>121.85</b> (When twr closed)	UNICOM <b>122.95</b>
------------------------	--	---------------------------------------	--------------------------	--------------------------	--	-------------------------



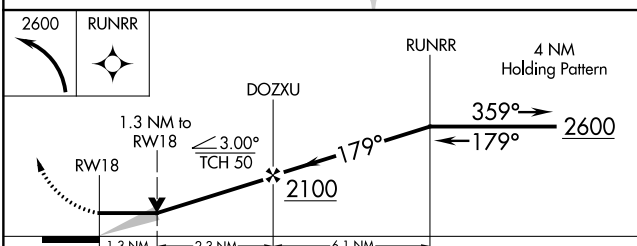
NC-1, 31 OCT 2024 to 28 NOV 2024

NC-1, 31 OCT 2024 to 28 NOV 2024



ELEV 912	TDZE 912
----------	----------

HIRL Rwy 9-27 **0**  
MIRL Rwy 18-36 **0**  
REIL Rws 9, 18 and 36 **0**



CATEGORY	A	B	C	D
LNVA MDA	1380-1 468 (500-1)		1380-1 3/8 468 (500-1 3/8)	
<b>C</b> CIRCLING	1400-1 488 (500-1)		1460-1 1/2 548 (600-1 1/2)	1580-2 668 (700-2)