

LOC I-POC 110.5	APP CRS 259°	Rwy Idg TDZE Apt Elev 4151 1005 1014
---------------------------	------------------------	--

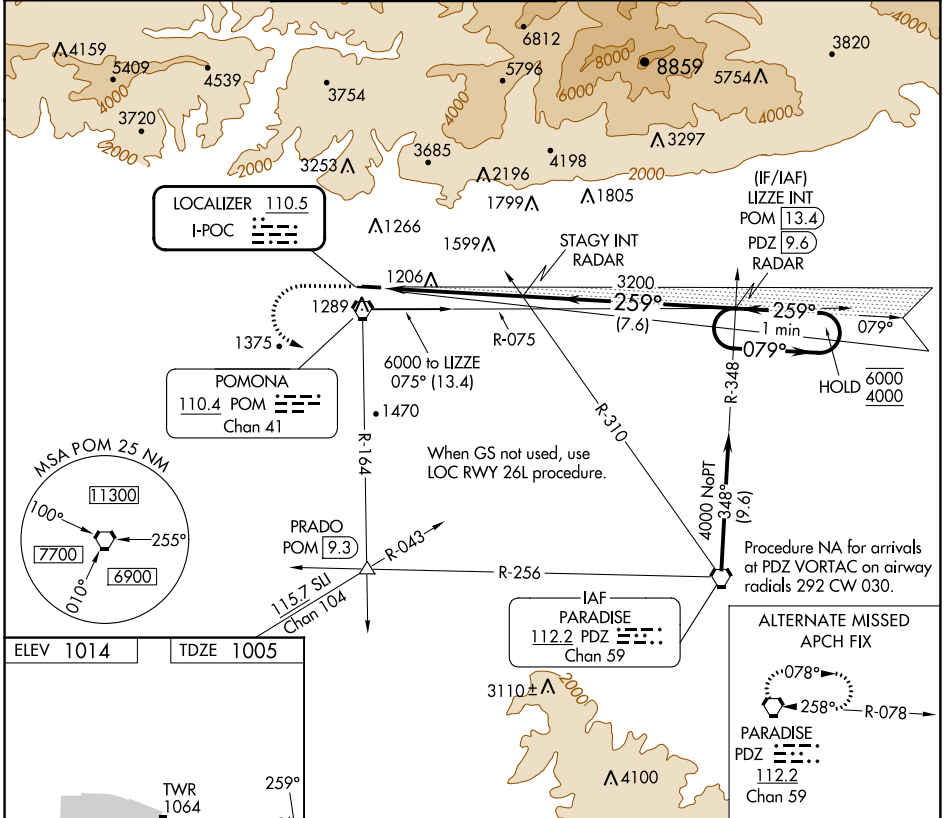
ILS RWY 26L

BRACKETT FLD (POC)

▼ Rwy 26L helicopter visibility reduction below 3/4 SM NA.
▲ When local altimeter setting not received, use Ontario Intl altimeter setting and increase DA to 1364.

MISSED APPROACH: Climb to 2100 then climbing left turn to 4000 on POM VORTAC R-164 to PRADO INT/POM 9.3 DME.

ATIS 124.4	SOCAL APP CON 125.5 349.0	BRACKETT TOWER* RWY 8R/26L 118.2 (CTAF)	RWY 8L/26R 133.3	GND CON 125.0	CLNC DEL 121.875	UNICOM 122.95
----------------------	-------------------------------------	--	----------------------------	-------------------------	----------------------------	-------------------------



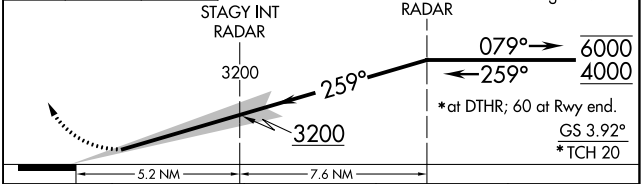
SW-3, 31 OCT 2024 to 28 NOV 2024

SW-3, 31 OCT 2024 to 28 NOV 2024

ELEV 1014	TDZE 1005
-----------	-----------

The diagram shows the runway layout. RWY 26L is 2611 feet long. RWY 26R is 3661 feet long. RWY 26C is 4840 feet long. The tower (TWR) is at an elevation of 1064 feet. The field elevation is 1005 feet. Gradients are noted as 1.0% UP and 0.9% UP.

2100	4000	PRADO	VGSI and ILS glidepath not coincident (VGSI Angle 3.76/TCH 18).	LIZZE INT PDZ 9.6 RADAR	One Minute Holding Pattern
------	------	-------	---	-------------------------	----------------------------



REIL Rws 8R and 26L MIRL Rwy 8R-26L	CATEGORY	A	B	C	D
	S-ILS 26L	1332-1	327 (400-1)		NA