

(LINSE1.LINSE) 24193

AL-5222 (FAA)

MARTIN STATE (MTN)

BALTIMORE, MARYLAND

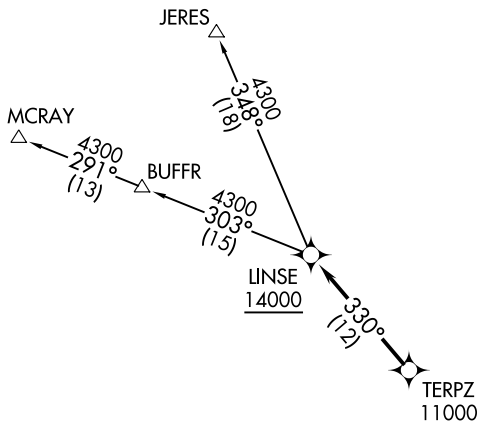
# LINSE ONE DEPARTURE (RNAV)

POTOMAC DEP CON  
 119.0 282.275  
 ATIS  
 124.925  
 GND CON  
 121.8 253.4  
 MARTIN TOWER ★  
 121.3 254.425

RNAV 1 - DME/DME/IRU or GPS.

RADAR required.

**TOP ALTITUDE:**  
**16000**

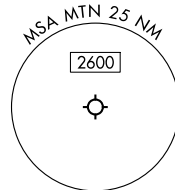


NOTE: Jet aircraft only.

TAKEOFF MINIMUMS:

Rwy 15: Standard.

Rwy 33: Standard with minimum climb of 215'/NM to 1300.



NOTE: Chart not to scale.



## DEPARTURE ROUTE DESCRIPTION

Climb on assigned heading for RADAR vectors to cross TERPZ at or above 11000, thence....

...then on track 330° to cross LINSE at or above 14000. Then on assigned transition. Maintain 16000, expect filed altitude 10 minutes after departure.

JERES TRANSITION (LINSE1.JERES)

MCRAY TRANSITION (LINSE1.MCRAY)

# LINSE ONE DEPARTURE (RNAV)

(LINSE1.LINSE) 11JUL24

BALTIMORE, MARYLAND  
MARTIN STATE (MTN)

NE-3, 31 OCT 2024 to 28 NOV 2024

NE-3, 31 OCT 2024 to 28 NOV 2024