

(TERPZ8.TERPZ) 24193

AL-5222 (FAA)

MARTIN STATE (MTN)

TERPZ EIGHT DEPARTURE (RNAV)

BALTIMORE, MARYLAND

POTOMAC DEP CON
119.7 290.475
ATIS
124.925
GND CON
121.8 253.4
MARTIN TOWER ★
121.3 (CTAF) 254.425
UNICOM
122.95

RNAV 1 - DME/DME/IRU or GPS.

RADAR required.

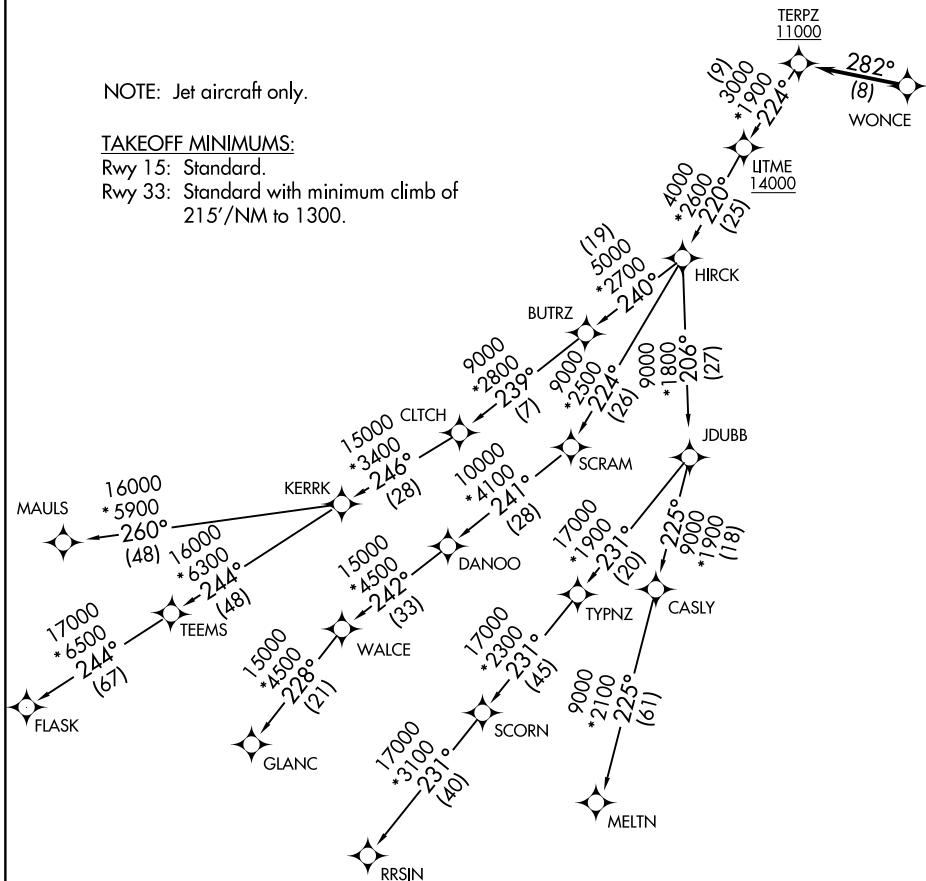
TOP ALTITUDE:
17000

NOTE: Jet aircraft only.

TAKEOFF MINIMUMS:

Rwy 15: Standard.

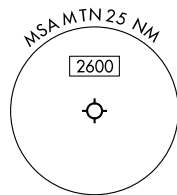
Rwy 33: Standard with minimum climb of 215'/NM to 1300.



NE-3, 31 OCT 2024 to 28 NOV 2024

NE-3, 31 OCT 2024 to 28 NOV 2024

NOTE: Chart not to scale.



TERPZ EIGHT DEPARTURE (RNAV)

(TERPZ8.TERPZ) 11JUL24

BALTIMORE, MARYLAND
MARTIN STATE (MTN)

TERPZ EIGHT DEPARTURE (RNAV)



DEPARTURE ROUTE DESCRIPTION

Climb on assigned heading for RADAR vectors to WONCE, thence. . . .

. . . then on track 282° to cross TERPZ at or above 11000, then on assigned transition.
Maintain 17000, expect filed altitude 10 minutes after departure.

CLTCH TRANSITION (TERPZ8.CLTCH)

FLASK TRANSITION (TERPZ8.FLASK)

GLANC TRANSITION (TERPZ8.GLANC)

MAULS TRANSITION (TERPZ8.MAULS)

MELTN TRANSITION (TERPZ8.MELTN)

RRSIN TRANSITION (TERPZ8.RRSIN)

NE-3, 31 OCT 2024 to 28 NOV 2024

NE-3, 31 OCT 2024 to 28 NOV 2024