

# WLFRD TWO DEPARTURE (RNAV)

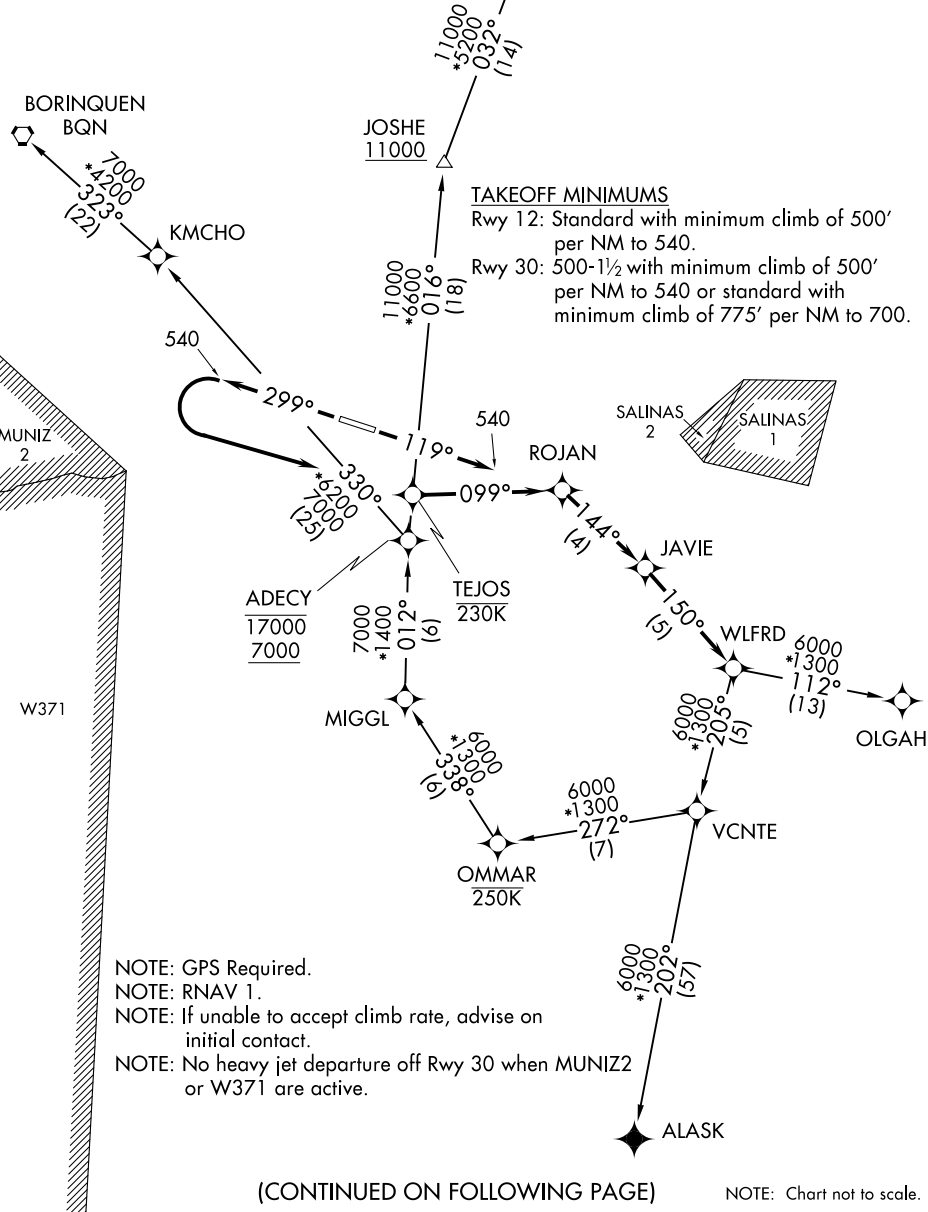
AL-5248 (FAA)

MERCEDITA (PSE)(TJPS)

PONCE, PUERTO RICO

CLNC DEL  
121.9  
CTAF  
122.7  
SAN JUAN CENTER  
118.75 269.0

**TOP ALTITUDE:  
ASSIGNED BY ATC**



SE-3, 31 OCT 2024 to 28 NOV 2024

SE-3, 31 OCT 2024 to 28 NOV 2024

(CONTINUED ON FOLLOWING PAGE)

NOTE: Chart not to scale.

# WLFRD TWO DEPARTURE (RNAV)

PONCE, PUERTO RICO

MERCEDITA (PSE)(TJPS)

# WLFRD TWO DEPARTURE (RNAV)



## DEPARTURE ROUTE DESCRIPTION

TAKEOFF RUNWAY 12: Climb heading 119° to 540, then direct ROJAN, then as depicted to WLFRD, thence. . . .

TAKEOFF RUNWAY 30: Climb heading 299° to 540, then left turn direct TEJOS, then on track 099° to ROJAN, then as depicted to WLFRD, thence. . . .

. . . . on assigned transition, maintain altitude assigned by ATC. Expect clearance to FL280, or requested altitude if lower, ten minutes after departure.

- ALASK TRANSITION (WLFRD2.ALASK)
- BORINQUEN TRANSITION (WLFRD2.BQN)
- DORADO TRANSITION (WLFRD2.DDP)
- OLGAH TRANSITION (WLFRD2.OLGAH)

SE-3, 31 OCT 2024 to 28 NOV 2024

SE-3, 31 OCT 2024 to 28 NOV 2024