

VORTAC MRB <b>112.1</b> Chan <b>58</b>	APP CRS <b>231°</b>	Rwy Idg TDZE Apt Elev <b>N/A</b> <b>N/A</b> <b>726</b>
--	------------------------	---

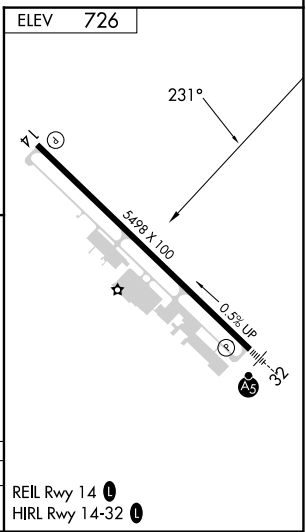
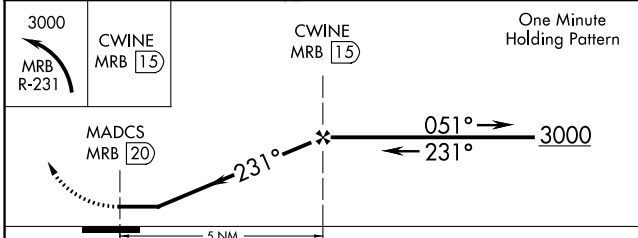
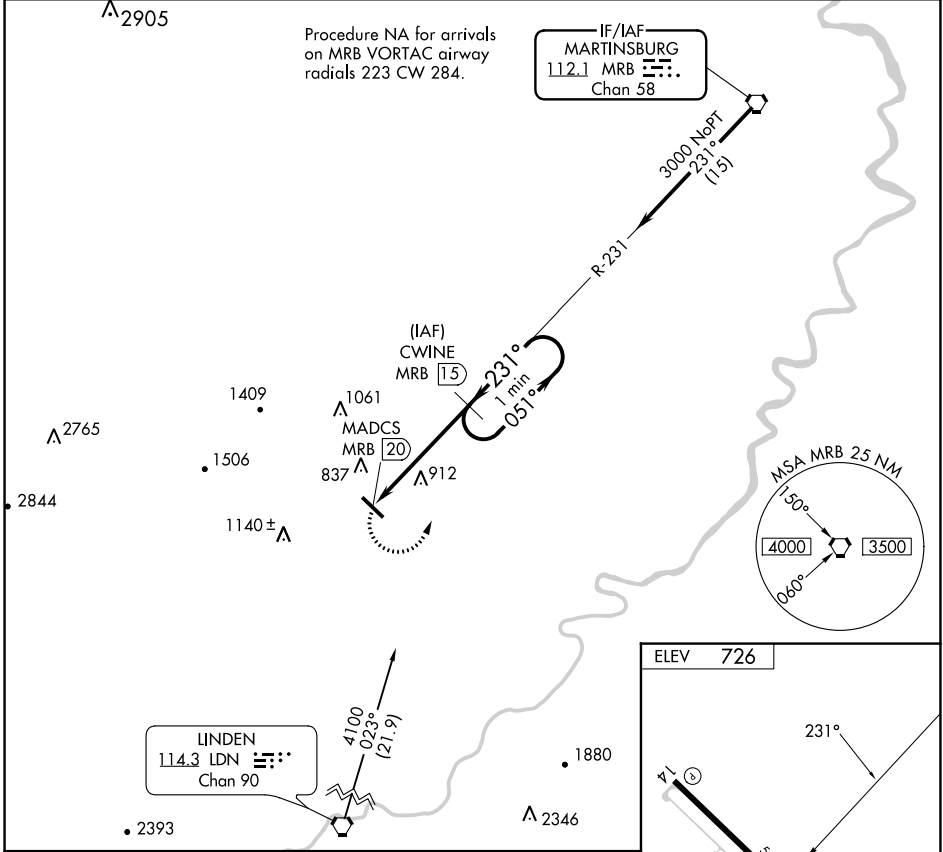
# VOR/DME-A

WINCHESTER RGNL (OKV)

**⚠** When local altimeter setting not received, use Martinsburg altimeter setting and increase all MDA 80 feet and Cat C visibility 1/4 mile.

**⚠** MISSED APPROACH: Climbing left turn to 3000 via MRB R-231 to CWINE/MRB 15 DME and hold, continue climb-in-hold to 3000.

AWOS-3 <b>124.85</b>	POTOMAC APP CON <b>120.45 306.925</b>	CLNC DEL <b>126.15</b>	UNICOM <b>122.975</b> (CTAF) <b>📞</b>
-------------------------	--	---------------------------	--



CATEGORY	A	B	C	D
<b>📍</b> CIRCLING	1180-1 454 (500-1)	1220-1 494 (500-1)	1380-1 3/4 654 (700-1 3/4)	1480-2 1/2 754 (800-2 1/2)

NE-3, 31 OCT 2024 to 28 NOV 2024

NE-3, 31 OCT 2024 to 28 NOV 2024