

WAAS CH 86431 W23A	APP CRS 227°	Rwy Idg TDZE Apt Elev	5000 429 441
--	------------------------	-----------------------------	---

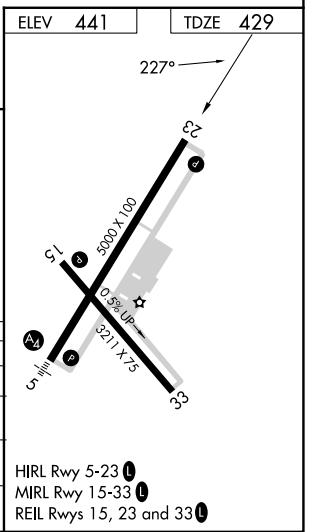
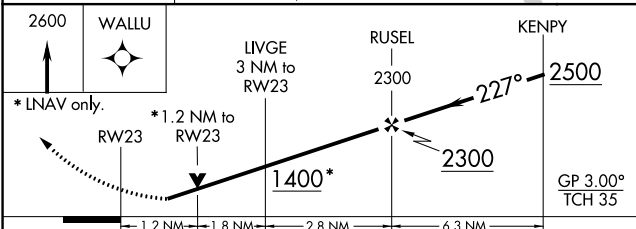
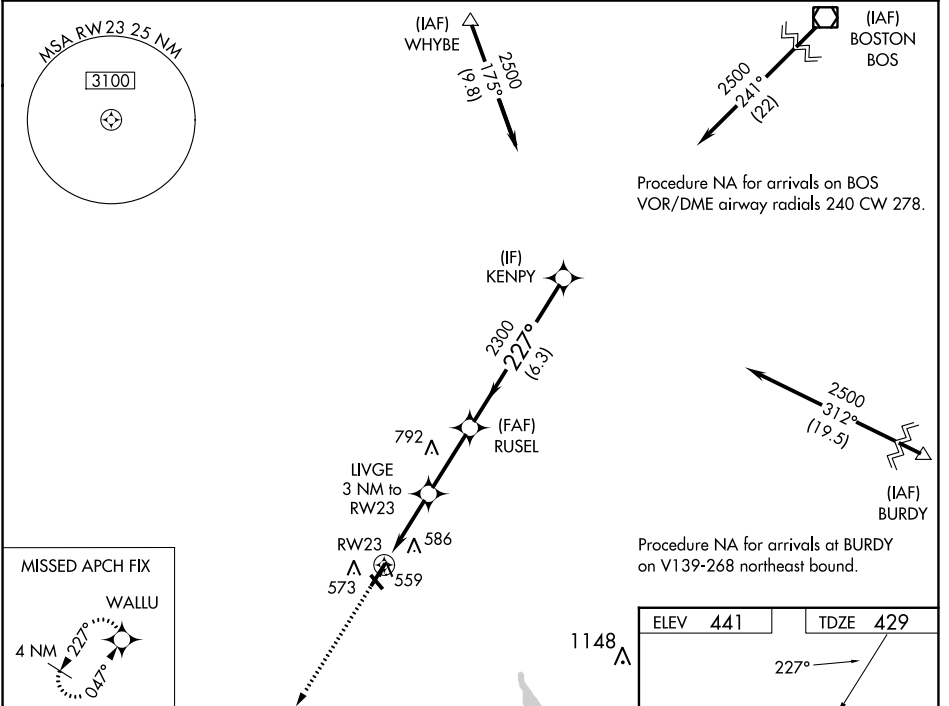
RNAV (GPS) RWY 23

NORTH CENTRAL STATE (S'F'Z)

⚠ Circling Rwy 15, 33 NA at night. Baro-VNAV NA when using Providence altimeter setting. For uncompensated Baro-VNAV systems, LNAV/VNAV NA below -15°C (4°F) or above 54°C (130°F).
⚠ DME/DME RNP-0.3 NA. VDP NA with Providence altimeter setting. When local altimeter setting not received, use Providence altimeter setting and increase all DA 82 feet and all MDA 100 feet; increase LPV all Cats visibility to 1/4, LNAV/VNAV all Cats visibility to 1/4 and LNAV Cat C visibility to 3/8. Rwy 23 helicopter visibility reduction below 3/4 SM NA.

MISSED APPROACH:
Climb to 2600 direct WALLU and hold.

AWOS-3PT 120.775	PROVIDENCE APP CON ★ 123.675 244.875	CLNC DEL 124.35	UNICOM 123.075 (CTAF) 0
----------------------------	--	---------------------------	-----------------------------------



CATEGORY	A	B	C	D
LPV DA	679-7/8	250 (300-7/8)		NA
LNAV/VNAV DA	849-1 1/2	420 (500-1 1/2)		NA
LNAV MDA	820-1 391 (400-1)		820-1 1/8 391 (400-1 1/8)	NA
C CIRCLING	900-1 459 (500-1)		900-1 1/2 459 (500-1 1/2)	NA

NE-1, 31 OCT 2024 to 28 NOV 2024

NE-1, 31 OCT 2024 to 28 NOV 2024