

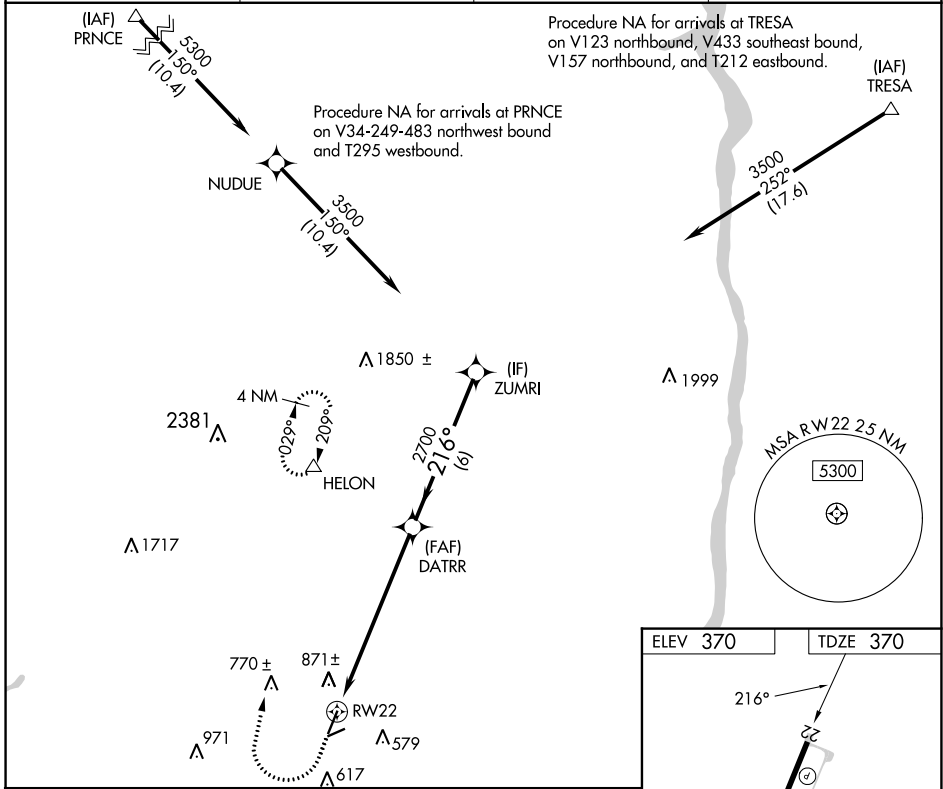
APP CRS	Rwy Idg	5006
216°	TDZE	370
	Apt Elev	370

RNAV (GPS) RWY 22

ORANGE COUNTY (MGJ)

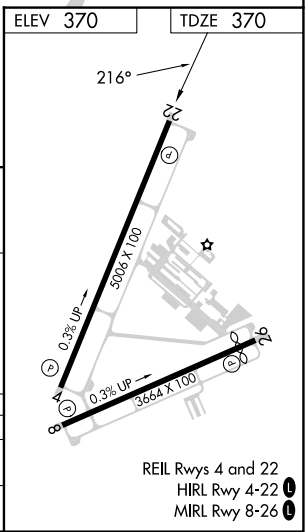
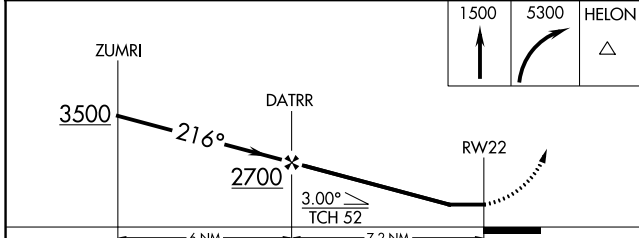
RNP APCH.		MISSED APPROACH: Climb to 1500 then climbing right turn to 5300 direct HELON and hold, continue climb-in-hold to 5300.	
<p>▼</p> <p>▲</p> <p>Rwy 22 helicopter visibility reduction below 1 SM NA. Straight-in Rwy 22 NA at night, Circling Rwy 8, 22, 26 NA at night.</p>			

ASOS 119.275	NEW YORK APP CON 132.75 363.1	CLNC DEL 123.85	AUNICOM 122.725 (CTAF)
------------------------	---	---------------------------	----------------------------------



NE-2, 31 OCT 2024 to 28 NOV 2024

NE-2, 31 OCT 2024 to 28 NOV 2024



CATEGORY	A	B	C	D
LNVA MDA	1140-1 770 (800-1)	1140-1¼ 770 (800-1¼)	1140-2½ 770 (800-2½)	
CIRCLING	1180-1 810 (900-1)	1180-1¼ 810 (900-1¼)	1180-2½ 810 (900-2½)	1220-2¾ 850 (900-2¾)