

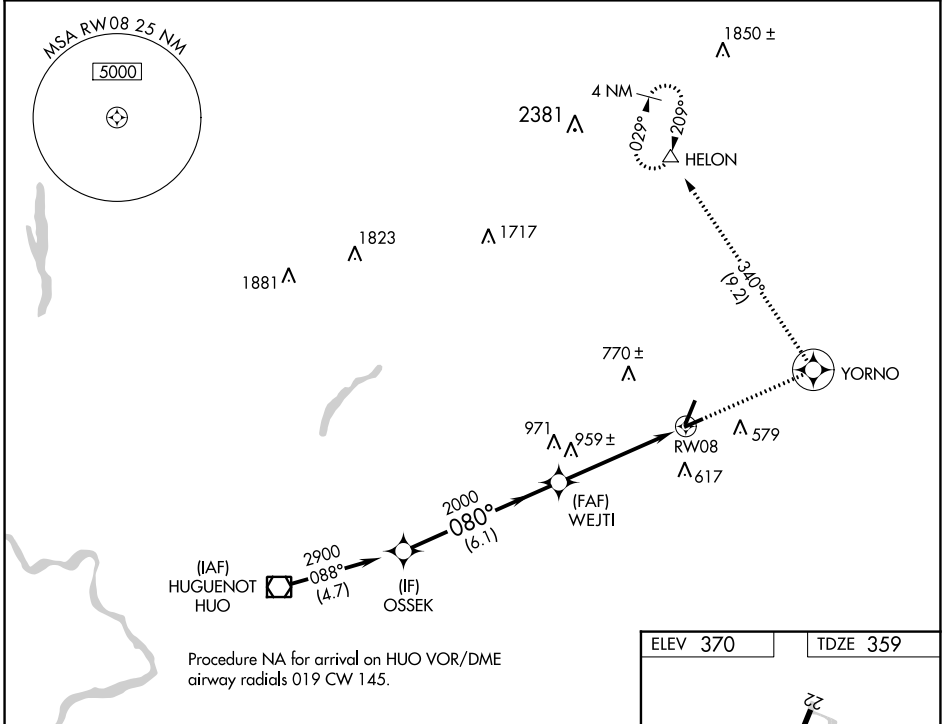
APP CRS 080°	Rwy ldg 3664
	TDZE 359
	Apt Elev 370

RNAV (GPS) RWY 8

ORANGE COUNTY (MGJ)

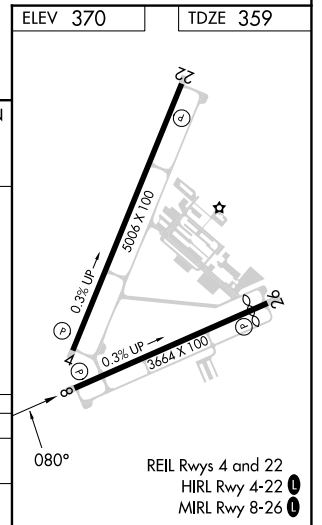
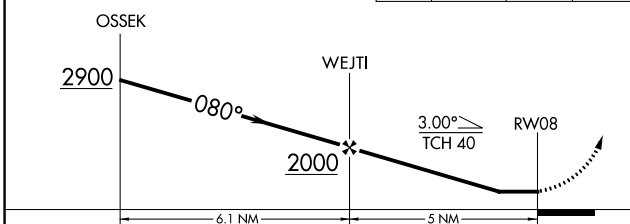
RNP APCH - GPS.	MISSED APPROACH: Climb to 5300 direct YORNO and left turn on track 340° to HELON and hold.
<p>▼ Rwy 8 helicopter visibility reduction below 1 SM NA. Straight-in Rwy 8 NA at night, Circling Rwy 8, 22, 26 NA at night.</p> <p>▲</p>	

ASOS 119.275	NEW YORK APP CON 132.75 363.1	CLNC DEL 123.85	AUNICOM 122.725 (CTAF) 0
------------------------	---	---------------------------	------------------------------------



Procedure NA for arrival on HUGO VOR/DME airway radials 019 CW 145.

VGSI and RNAV glidepath not coincident (VGSI Angle 3.50/TCH 49).	5300	YORNO	HELON
	▲	⊙	△
		tr 340°	



CATEGORY	A	B	C	D
LNVA MDA	1220-1	861 (900-1)	1220-2½	861 (900-2½)
C CIRCLING	1220-1¼	850 (900-1¼)	1220-2½ 850 (900-2½)	1220-2¾ 850 (900-2¾)

NE-2, 31 OCT 2024 to 28 NOV 2024

NE-2, 31 OCT 2024 to 28 NOV 2024