

WAAS CH 77820 W05A	APP CRS 050°	Rwy Idg TDZE 259 Apt Elev 262
--	------------------------	---

RNAV (GPS) RWY 5

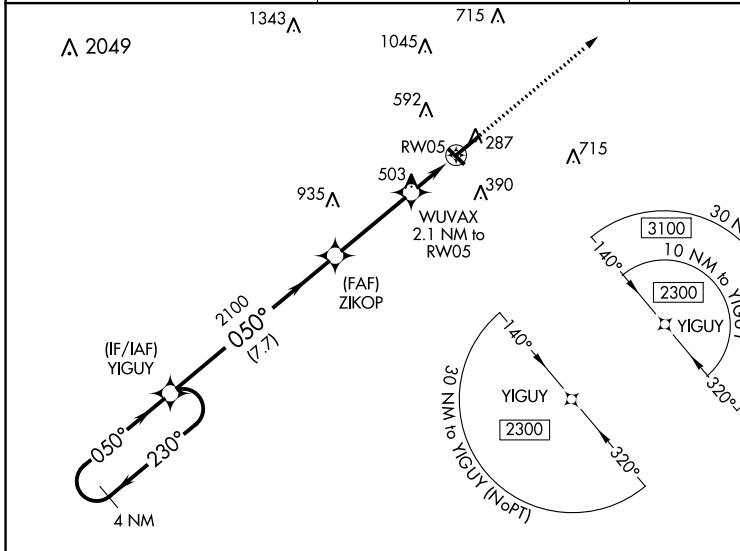
JONESBORO MUNI (JBR)

RNP APCH.

⚠ Circling Rwy 31 NA at night. Baro-VNAV and VDP NA when using Walnut Ridge altimeter setting. For uncompensated Baro-VNAV systems, LNAV/VNAV NA below -12°C or above 54°C. Circling NA northwest of Rwy 5-23. Rwy 5 helicopter visibility reduction below 3/4 SM NA. When local altimeter setting not received, use Walnut Ridge altimeter setting; increase LPV DA to 593 feet and visibility 1/8 SM, and LNAV/VNAV DA to 669 feet; increase all MDAs 60 feet and visibility LNAV Cats C/D and Circling Cat C 1/4 SM.

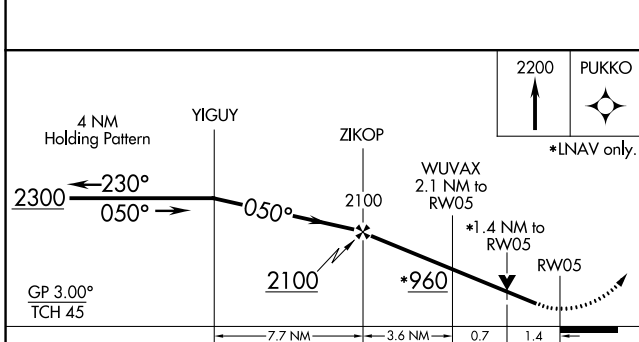
MISSED APPROACH:
Climb to 2200 direct PUKKO and hold.

ASOS 118.525	MEMPHIS CENTER 120.075 289.4	UNICOM 123.0 (CTAF)
------------------------	--	-------------------------------



SC-1, 31 OCT 2024 to 28 NOV 2024

SC-1, 31 OCT 2024 to 28 NOV 2024



ELEV 262	TDZE 259
----------	----------

CATEGORY	A	B	C	D
LPV DA		539-7/8	280 (300-7/8)	
LNAV/VNAV DA		615-1 1/8	356 (400-1 1/8)	
LNAV MDA	760-1	501 (500-1)	760-1 3/8	501 (500-1 3/8)
CIRCLING	760-1	498 (500-1)	820-1 1/2 558 (600-1 1/2)	1080-2 3/4 818 (900-2 3/4)

