

ARSENAL FIVE DEPARTURE  
(ARSNL5.CSN) 21JUL16

MANASSAS RGNL/HARRY P DAVIS FLD (HEIF)  
WASHINGTON, D.C.

ATIS  
125.175  
POTOMAC CLNC DEL  
120.2  
GND CON  
121.8  
MANASSAS TOWER \*  
133.1 (CTAF) 360.75  
POTOMAC DEP CON  
128.525 306.925

MARTINSBURG  
112.1 MRB  
Chan 58

LINDEN  
114.3 LDN  
Chan 90

CASANOVA  
116.3 CSN  
Chan 110  
3000

MONTEBELLO  
115.3 MOL  
Chan 100

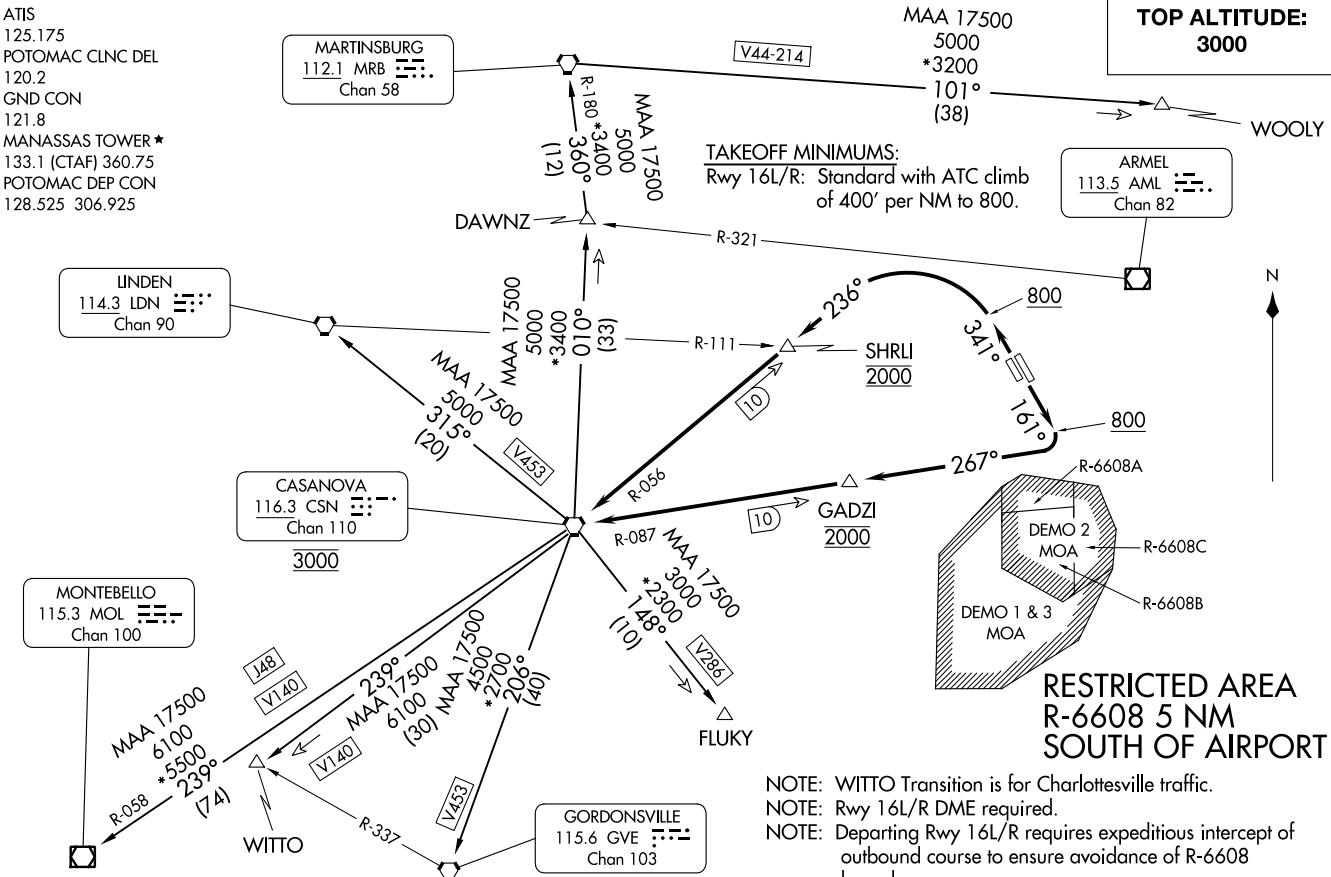
GORDONSVILLE  
115.6 GVE  
Chan 103

ARMEL  
113.5 AML  
Chan 82

TOP ALTITUDE:  
3000

WOOLY

TAKEOFF MINIMUMS:  
Rwy 16L/R: Standard with ATC climb  
of 400' per NM to 800.



NOTE: Chart not to scale.

NOTE: WITTO Transition is for Charlottesville traffic.  
NOTE: Rwy 16L/R DME required.  
NOTE: Departing Rwy 16L/R requires expeditious intercept of  
outbound course to ensure avoidance of R-6608  
boundary.

(NARRATIVE ON FOLLOWING PAGE)

ARSENAL FIVE DEPARTURE  
(ARSNL5.CSN) 23334

MANASSAS RGNL/HARRY P DAVIS FLD (HEIF)  
WASHINGTON, D.C.  
AL-5326 (FAA)



DEPARTURE ROUTE DESCRIPTION

TAKEOFF RWY 34L/R: Climb heading 341° to 800, then climbing left turn on CSN VORTAC R-056. Cross SHRLI INT/CSN 10 DME at 2000, cross CSN VORTAC at 3000. Thence....

TAKEOFF RWY 16L/R: Climb heading 161° to 800, then climbing right turn on CSN VORTAC R-087, cross GADZI/CSN 10 DME at 2000, cross CSN VORTAC at 3000. Thence....

....via assigned transition.

FLUKY TRANSITION (ARSNL5.FLUKY): From over CSN VORTAC on CSN R-148 to FLUKY INT.

GORDONSVILLE TRANSITION (ARSNL5.GVE): From over CSN VORTAC on CSN R-206 to GVE VORTAC.

LINDEN TRANSITION (ARSNL5.LDN): From over CSN VORTAC on CSN R-315 to LDN VORTAC.

MARTINSBURG TRANSITION (ARSNL5.MRB): From over CSN VORTAC on CSN R-010 to DAWNZ INT, then on MRB R-180 to MRB VORTAC.

MONTEBELLO TRANSITION (ARSNL5.MOL): From over CSN VORTAC on CSN R-239 and MOL R-058 to MOL VOR/DME.

WITTO TRANSITION (ARSNL5.WITTO): From over CSN VORTAC on CSN R-239 to WITTO INT.

WOOLY TRANSITION (ARSNL5.WOOLY): From over CSN VORTAC on CSN R-010 to DAWNZ INT, then on MRB R-180 to MRB VORTAC, then on MRB R-101 to WOOLY INT.

NE-3, 31 OCT 2024 to 28 NOV 2024

NE-3, 31 OCT 2024 to 28 NOV 2024