

WAAS CH 99724 W06A	APP CRS 059°	Rwy Idg TDZE Apt Elev	2598 670 670
--	------------------------	-----------------------------	---

RNAV (GPS) RWY 6

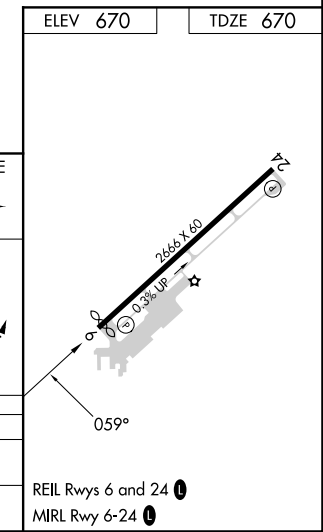
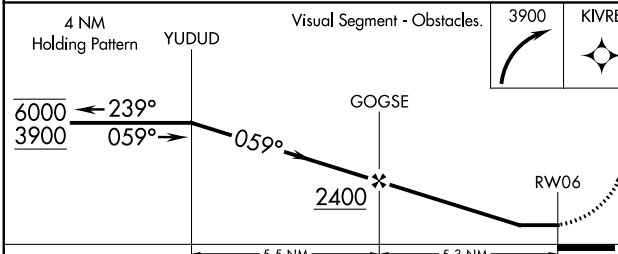
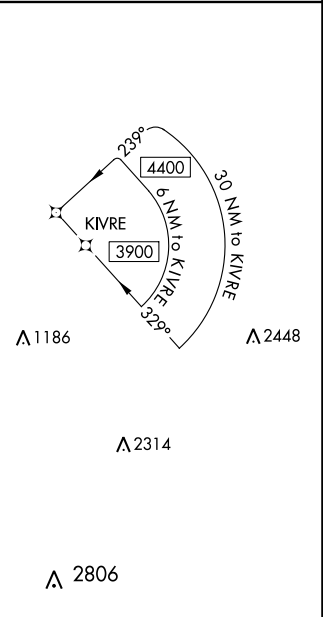
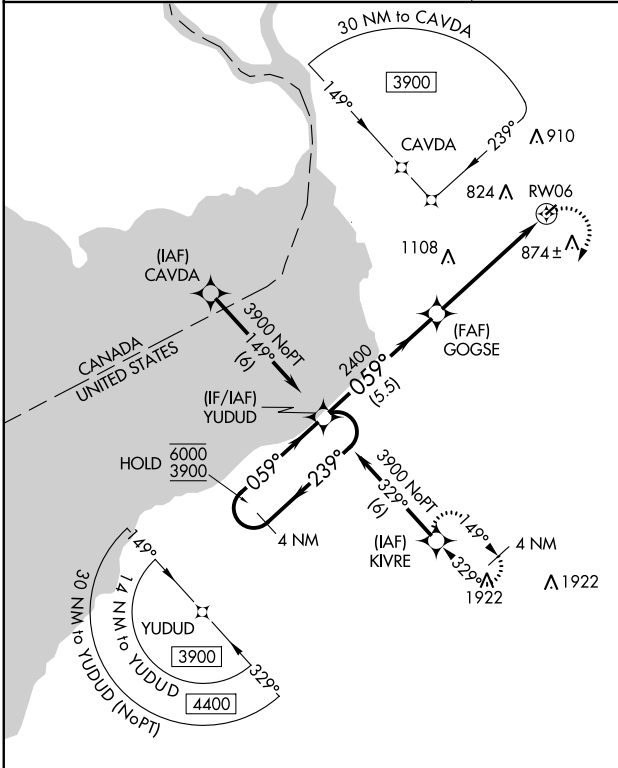
BUFFALO AIRFIELD (9G~~0~~)

RNP APCH.

NA Procedure NA at night. Rwy 6 helicopter visibility reduction below 1 SM NA. Use Buffalo Niagara Intl altimeter setting.

MISSED APPROACH: Climbing right turn to 3900 direct KIVRE and hold, continue climb in hold to 3900.

BUFFALO APP CON 126.15 263.125	UNICOM 122.975 (CTAF) 0
--	-----------------------------------



CATEGORY	A	B	C	D
LP MDA	1180-1	510 (600-1)		NA
LNAV MDA	1180-1	510 (600-1)		NA

NE-2, 31 OCT 2024 to 28 NOV 2024

NE-2, 31 OCT 2024 to 28 NOV 2024