

LOC/DME I-FJD 110.55 Chan 42 (Y)	APP CRS 097°	Rwy Idg 6492 TDZE 23 Apt Elev 23
--	------------------------	---

ILS or LOC RWY 10R

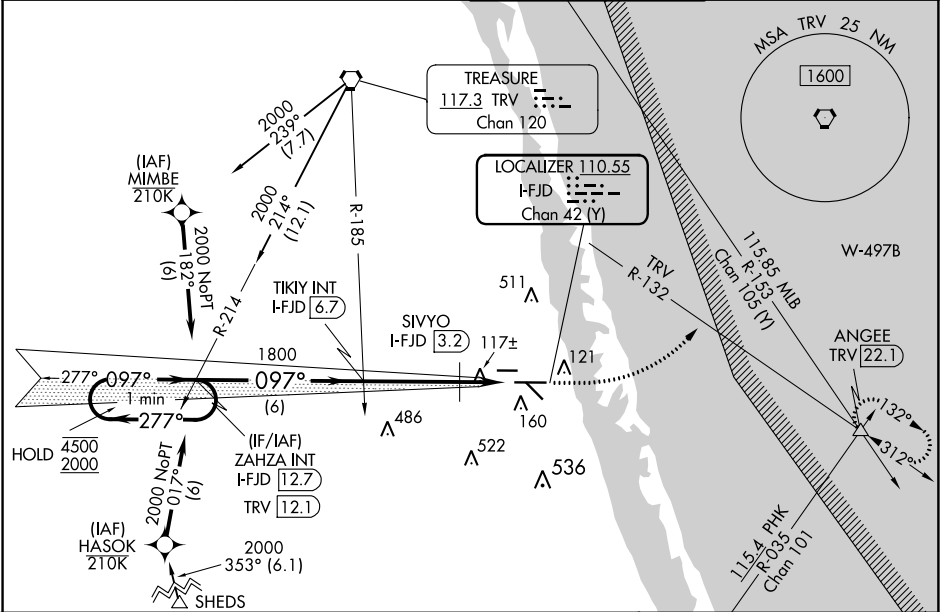
TREASURE COAST INTL (FPR)

RNAV 1-GPS or DME required for procedure entry.

Autopilot coupled approach NA below 720 MSL.

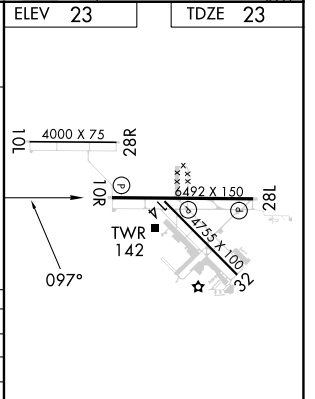
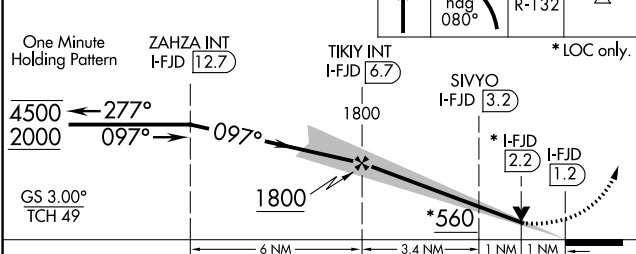
MISSED APPROACH: Climb to 1000 then climbing left turn to 2000 on heading 080° and TRV VORTAC R-132 to ANGEE INT/TRV 22.1 DME and hold.

ATIS 134.825	PALM BEACH APP CON 132.8	FORT PIERCE TOWER * 128.2 (CTAF) 0	GND CON (GCO) 119.55
------------------------	------------------------------------	---	--------------------------------



VGSI and ILS glidepath not coincident (VGSI Angle 3.00/TCH 52).

1000 2000 hdg 080° TRV R-132 ANGEE



CATEGORY	A	B	C	D
S-ILS 10R	273-3/4 250 (300-3/4)			
S-LOC 10R	560-1	537 (600-1)	560-1 1/2	537 (600-1 1/2)
CIRCLING	560-1	537 (600-1)	880-2 1/2 857 (900-2 1/2)	880-2 3/4 857 (900-2 3/4)
SIVYO FIX MINIMUMS (DME REQUIRED)				
S-LOC 10R	380-1 357 (400-1)			
CIRCLING	460-1 437 (500-1)	480-1 457 (500-1)	880-2 1/2 857 (900-2 1/2)	880-2 3/4 857 (900-2 3/4)

REIL Rwy 10R and 28L
MRL all Rwy 1

FAF to MAP 5.4 NM

Knots	60	90	120	150	180
Min:Sec	5:24	3:36	2:42	2:10	1:48

SE-3, 31 OCT 2024 to 28 NOV 2024

SE-3, 31 OCT 2024 to 28 NOV 2024