

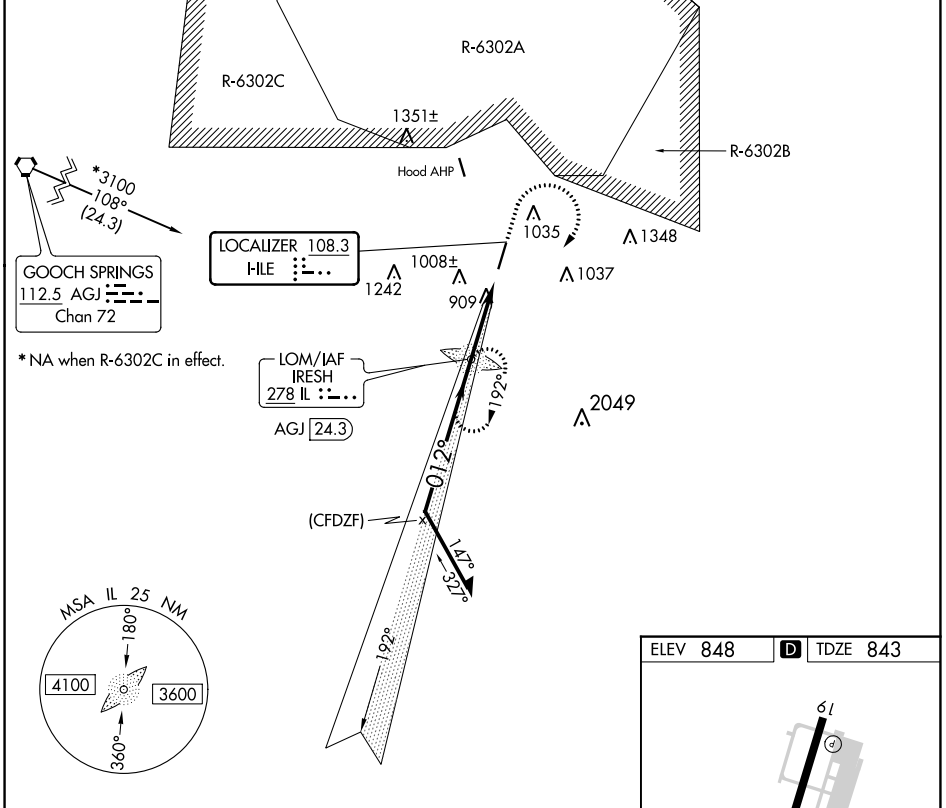
LOC HLE <b>108.3</b>	APP CRS <b>012°</b>	Rwy Idg TDZE Apt Elev	<b>4641</b> <b>843</b> <b>848</b>
-------------------------	------------------------	-----------------------------	---

# LOC RWY 1

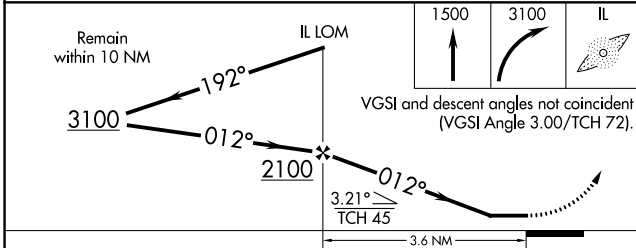
SKYLARK FLD (I.L.E.)

ADF required.		MISSED APPROACH: Climb to 1500 then climbing right turn to 3100 direct IRESH LOM and hold, continue climb-in-hold to 3100.
▼ NA	Circling Rwy 19 NA at night.	

AWOS-3PT <b>128.575</b>	GRAY APP CON <b>120.075 323.15</b>	CLNC DEL <b>121.7</b>	UNICOM <b>122.7 (CTAF) 0</b>
----------------------------	---------------------------------------	--------------------------	---------------------------------



\*NA when R-6302C in effect.



ELEV 848	D	TDZE 843
----------	---	----------

Diagram showing the runway layout for **REIL Rwy 1 and 19** and **MIRL Rwy 1-19**. Key dimensions and angles include:
 

- 61** feet width.
- 900** feet distance to the start of the runway.
- 5495 X 100** feet runway length.
- 012°** heading.

FAF to MAP 3.6 NM
Knots: 60, 90, 120, 150, 180
Min:Sec: 3:36, 2:24, 1:48, 1:26, 1:12

CATEGORY	A	B	C	D
S-1	1160-1	317 (400-1)		NA
CIRCLING	1300-1 452 (500-1)	1340-1 492 (500-1)	1440-1½ 592 (600-1½)	NA

SC-3, 31 OCT 2024 to 28 NOV 2024

SC-3, 31 OCT 2024 to 28 NOV 2024