

| | | |
|-------------|----------|-------------|
| APP CRS | Rwy Idg | 6028 |
| 208° | TDZE | 419 |
| | Apt Elev | 419 |

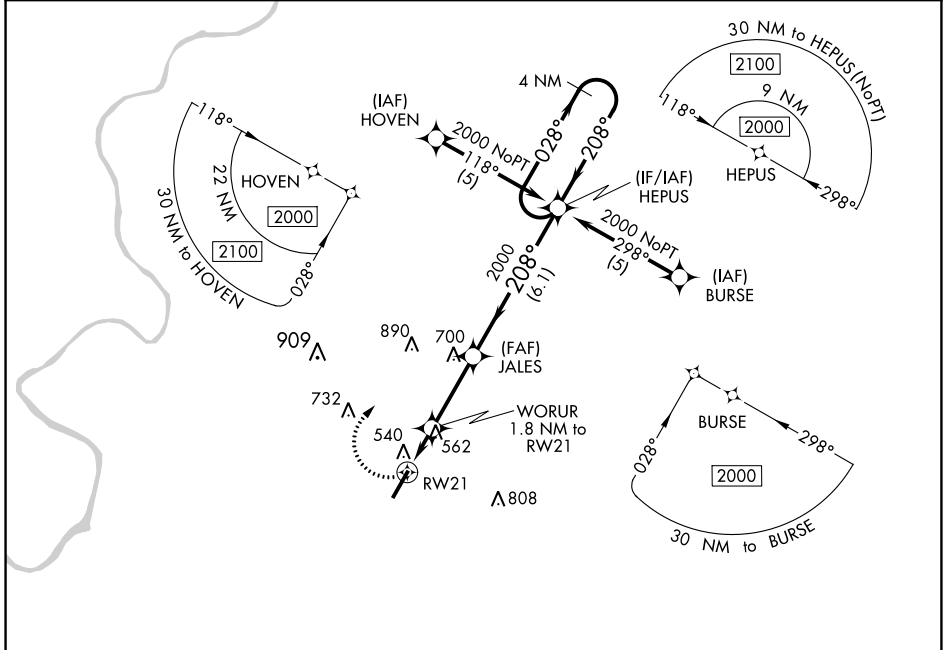
RNAV (GPS) RWY 21

MONROE COUNTY AEROPLEX (MVC)

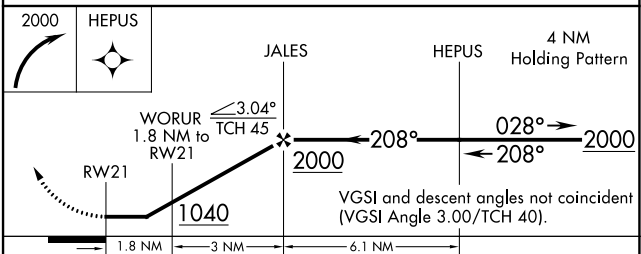
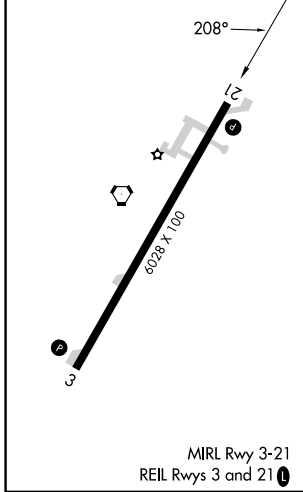
RNP APCH. MISSED APPROACH: Climbing right turn to 2000 direct HEPUS and hold.

▽ Obtain local altimeter setting on CTAF; when not received, use Evergreen Rgnl/Middleton Fld altimeter setting. Procedure NA at night. Rwy 21 helicopter visibility reduction below 1 SM NA.

ATLANTA CENTER **118.55 267.9** UNICOM **123.0** (CTAF) **0**



| | |
|----------|----------|
| ELEV 419 | TDZE 419 |
|----------|----------|



| CATEGORY | A | B | C | D |
|---|----------------------|----------------------|---|--|
| LNAV/MDA | 880-1 | 461 (500-1) | 880-1 ³ / ₄ 461 (500-1 ³ / ₄) | 880-1 ¹ / ₂ 461 (500-1 ¹ / ₂) |
| CIRCLING | 880-1 461 (500-1) | 920-1 501 (600-1) | 920-1 ¹ / ₂ 501 (600-1 ¹ / ₂) | 1120-2 ¹ / ₄ 701 (800-2 ¹ / ₄) |
| EVERGREEN RGNL/MIDDLETON FLD ALTIMETER SETTING MINIMUMS | | | | |
| LNAV/MDA | 940-1 | 521 (600-1) | 940-1 ¹ / ₂ 521 (600-1 ¹ / ₂) | 940-1 ³ / ₄ 521 (600-1 ³ / ₄) |
| CIRCLING | 940-1 521 (600-1) | 980-1 561 (600-1) | 980-1 ¹ / ₂ 561 (600-1 ¹ / ₂) | 1180-2 ¹ / ₂ 761 (800-2 ¹ / ₂) |

SE-4, 31 OCT 2024 to 28 NOV 2024

SE-4, 31 OCT 2024 to 28 NOV 2024