

WAAS CH <b>86309</b> <b>W06A</b>	APP CRS <b>057°</b>	Rwy Idg <b>4199</b> TDZE <b>1763</b> Apt Elev <b>1763</b>
--	------------------------	---

# RNAV (GPS) RWY 6

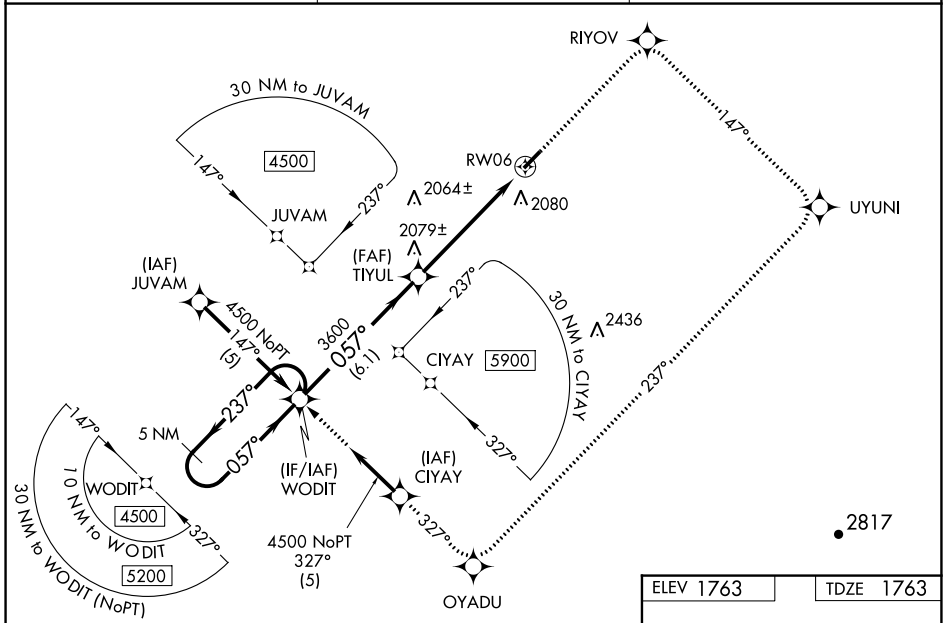
ALBERT S NADER RGNL (N66)

RNP APCH.

**NA** When local altimeter setting not received, use Binghamton altimeter setting: increase LPV DA to 2197 feet, LNAV/VNAV DA to 2473 feet, and all MDAs 140 feet; increase LPV and LNAV/VNAV visibilities all Cats ½ SM. Baro-VNAV NA when using Binghamton altimeter setting. For uncompensated Baro-VNAV systems, LNAV/VNAV NA below -18°C or above 54°C. Rwy 6 helicopter visibility reduction below 1 SM NA. Procedure NA at night.

**MISSED APPROACH:** Climb to 4500 direct RIYOV and right turn on track 147° to UYUNI and right turn on track 237° to OYADU and on track 327° to WODIT and hold.

AWOS-3 <b>119.575</b>	BOSTON CENTER <b>133.25 279.5</b>	UNICOM <b>122.8 (CTAF) 0</b>
--------------------------	--------------------------------------	---------------------------------

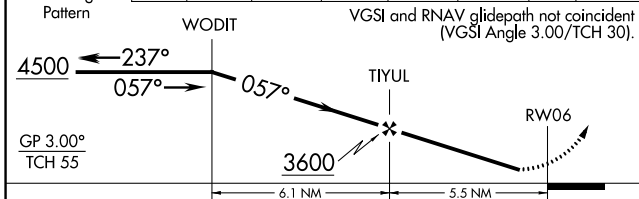


NE-2, 31 OCT 2024 to 28 NOV 2024

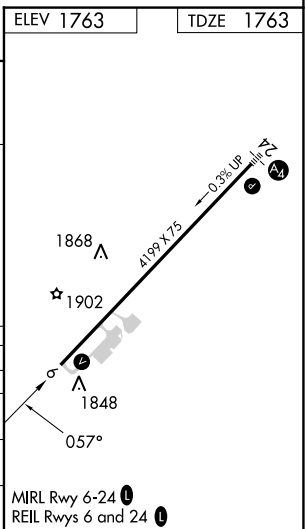
NE-2, 31 OCT 2024 to 28 NOV 2024

5 NM Holding Pattern	4500	RIYOV	UYUNI	OYADU	tr 327°	WODIT
----------------------	------	-------	-------	-------	---------	-------

VGSI and RNAV glidepath not coincident (VGSI Angle 3.00/TCH 30).



CATEGORY	A	B	C	D
LPV DA	2075-1	312 (400-1)		NA
LNAV/VNAV DA	2351-2	588 (600-2)		NA
LNAV MDA	2260-1	497 (500-1)		NA
CIRCLING	2380-1	617 (700-1)		NA



MIRL Rwy 6-24 0  
REIL Rws 6 and 24 0