

LOC I-FZU	APP CRS	Rwy Idg	<b>7004</b>
<b>111.1</b>	<b>259°</b>	TDZE	<b>462</b>
		Apt Elev	<b>463</b>

# ILS or LOC RWY 26L

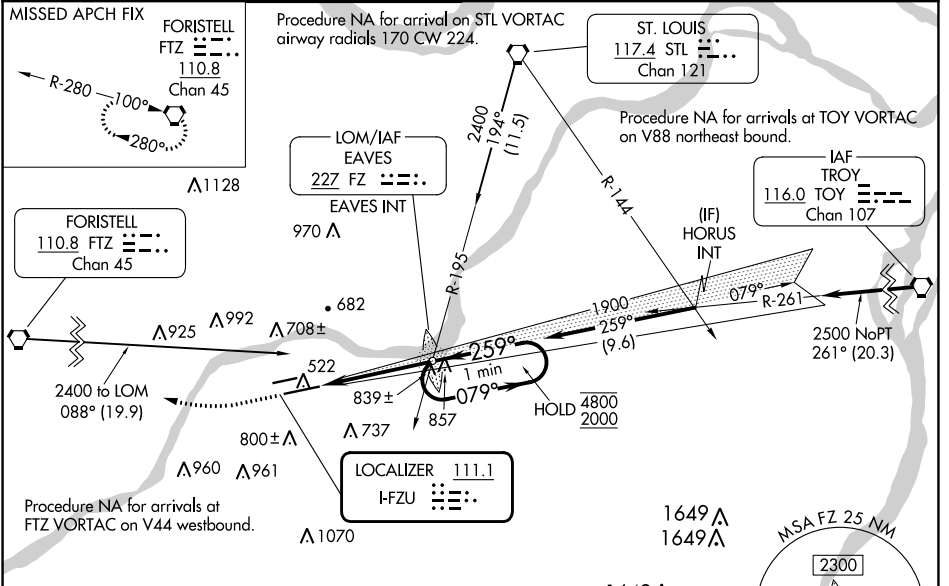
SPRIT OF ST LOUIS (SUS)

When local altimeter setting not received, use St Louis Lambert Intl altimeter setting: increase S-ILS 26L DA to 705 feet; increase all MDAs 60 feet and S-LOC 26L visibility Cat C and D 1/2 SM and Circling visibility C 1/4 SM. For inop ALS, increase S-LOC 26L Cats C and D visibility to 1 1/2 SM. For inop ALS when using St Louis Lambert Intl altimeter setting, increase S-LOC 26L Cats C and D visibility to 2 SM. \*RVR 1800 authorized with use of FD or AP or HUD to DA (NA when using St Louis Lambert Intl altimeter setting).

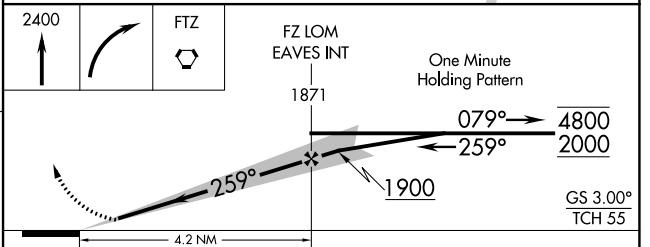
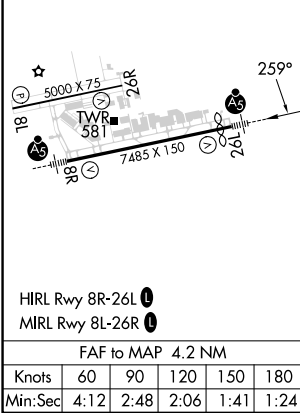


**MISSED APPROACH:**  
Climb to 2400 then right turn direct FTZ VORTAC and hold.

ATIS	ST. LOUIS APP CON	SPRIT TOWER*	GND CON	CLNC DEL	ST. LOUIS CLNC DEL	UNICOM
<b>134.8</b>	<b>126.5 254.3</b>	<b>124.75 (CTAF) 257.2</b>	<b>121.7</b>	<b>133.1</b>	<b>121.7</b> (when tower closed)	<b>122.95</b>



ELEV 463	<b>D</b>	TDZE 462
----------	----------	----------



CATEGORY	A	B	C	D
S-ILS 26L *	662/24 200 (200-1/2)			
S-LOC 26L	1140/24	678 (700-1/2)	1140-1 1/2	678 (700-1 1/2)
CIRCLING	1140-1 677 (700-1)		1180-2	1360-3
			717 (800-2)	897 (900-3)

NC-3, 31 OCT 2024 to 28 NOV 2024

NC-3, 31 OCT 2024 to 28 NOV 2024