

|             |          |             |
|-------------|----------|-------------|
| APP CRS     | Rwy Idg  | <b>3598</b> |
| <b>039°</b> | TDZE     | <b>472</b>  |
|             | Apf Elev | <b>482</b>  |

# RNAV (GPS) RWY 4

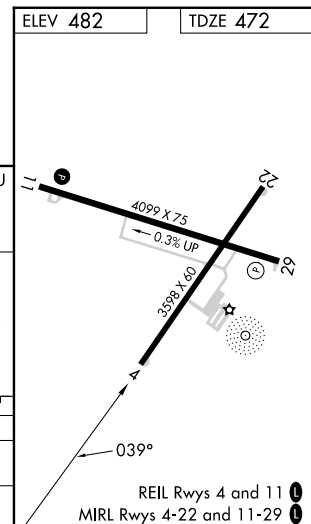
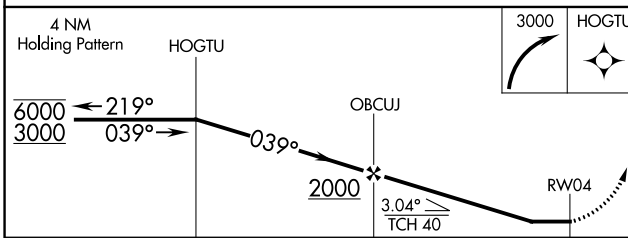
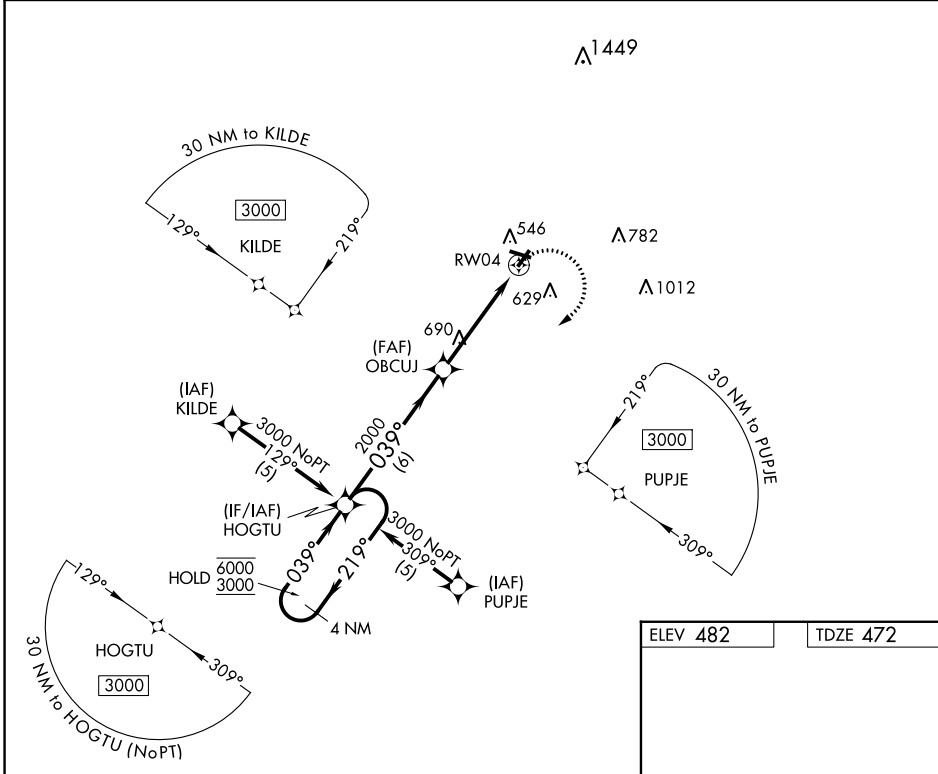
OLNEY-NOBLE (OLY)

RNP APCH.

**▼** Rwy 4 helicopter visibility reduction below 3/4 SM NA. When local altimeter setting not received, use Evansville Rgnl altimeter setting and increase all MDA 140 feet and increase LNAV Cat C/D and Circling Cat C/D visibility 1/2 mile.

**MISSED APPROACH:**  
Climbing right turn to 3000 direct HOGTU and hold.

|                          |   |                                 |
|--------------------------|---|---------------------------------|
| AWOS-3<br><b>119.275</b> | KANSAS CITY CENTER<br><b>124.3 269.15</b> | UNICOM<br><b>123.0 (CTAF) 0</b> |
|--------------------------|---|---------------------------------|



| CATEGORY          | A     | B           | C                            | D                             |
|-------------------|-------|-------------|------------------------------|-------------------------------|
| LNAV MDA          | 940-1 | 468 (500-1) | 940-1 3/8                    | 468 (500-1 3/8)               |
| <b>C</b> CIRCLING | 960-1 | 478 (500-1) | 960-1 1/2<br>478 (500-1 1/2) | 1180-2 1/4<br>698 (700-2 1/4) |

EC-3, 31 OCT 2024 to 28 NOV 2024

EC-3, 31 OCT 2024 to 28 NOV 2024