

LOC/DME I-HEW 110.5 Chan 42	APP CRS 168°	Rwy Idg TDZE Apt Elev	6002 152 152
---	------------------------	-----------------------------	---

LOC RWY 17R

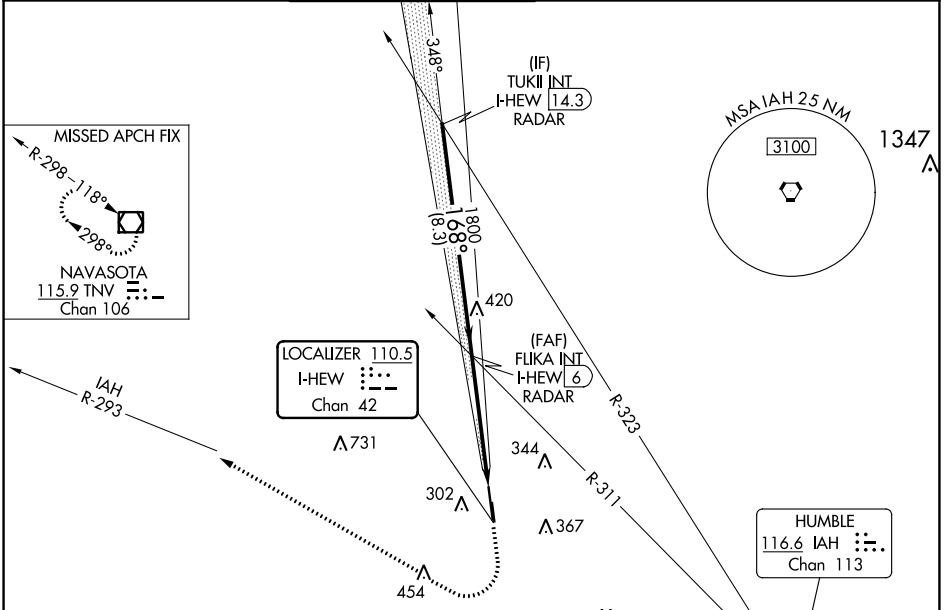
DAVID WAYNE HOOKS MEML (DWH)

RADAR required for procedure entry.

▽ When local altimeter setting not received, use George Bush Intcnl/Houston altimeter setting and increase all MDA 40 feet; increase S-LOC 17R Cts C/D visibility 1/8 mile. Circling NA to Rwys 17W and 35W. Rwy 17R helicopter visibility reduction below 3/4 SM NA. Circling Rwy 35R NA at night.

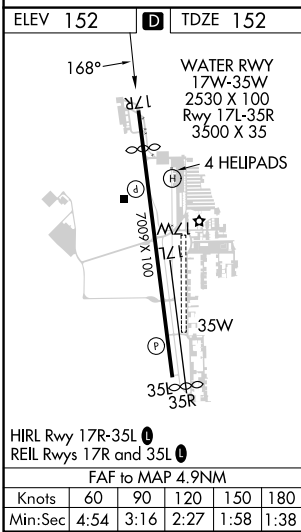
MISSED APPROACH: Climb to 1200 then climbing right turn to 2000 on heading 325° and IAH VORTAC R-293 to TNV VOR/DME and hold.

ATIS 128.375	HOUSTON APP CON 119.7 281.4	HOOKS TOWER* 127.4 354.1 EAST 118.4 (CTAF) 354.1 WEST	GND CON 121.8 239.0	CLNC DEL 119.45	UNICOM 122.95
------------------------	---------------------------------------	---	-------------------------------	---------------------------	-------------------------



SC-5, 31 OCT 2024 to 28 NOV 2024

SC-5, 31 OCT 2024 to 28 NOV 2024



ELEV 152	TDZE 152	Visual Segment - Obstacles.		
		1200	2000	TNV
<p>TUKII INT I-HEW 14.3 RADAR</p> <p>FLIKA INT I-HEW 6 RADAR</p> <p>I-HEW 1.1</p>		↑	hdg 325°	IAH R-293
<p>2000</p> <p>168°</p> <p>1800</p>		<p>8.3 NM</p> <p>4.9 NM</p>		
CATEGORY	A	B	C	D
S-LOC 17R	640-1	488 (500-1)	640-1 3/8	488 (500-1 3/8)
C CIRCLING	640-1	660-1	680-1 1/2	780-2
	488 (500-1)	508 (600-1)	528 (600-1 1/2)	628 (700-2)