

RADAR and DME required.

**TOP ALTITUDE:  
ASSIGNED BY ATC**

TAKEOFF MINIMUMS

Rwys 17L, 35R: NA - Environmental.

Waterways 17, 35: NA - Air Traffic.

Rwys 17R, 35L: Standard.

ATIS  
128.375  
CLNC DEL  
119.45  
GND CON  
121.8 239.0  
121.8 239.0  
HOOKS TOWER\*  
127.4 354.1 (EAST)  
118.4 (CTAF) 354.1 (WEST)  
HOUSTON DEP CON  
119.7 281.4 (Rwys 35L/R)  
123.8 257.7 (Rwys 17L/R)

FORT STOCKTON  
116.9 FST  
Chan 116

SAN ANTONIO  
116.8 SAT  
Chan 115

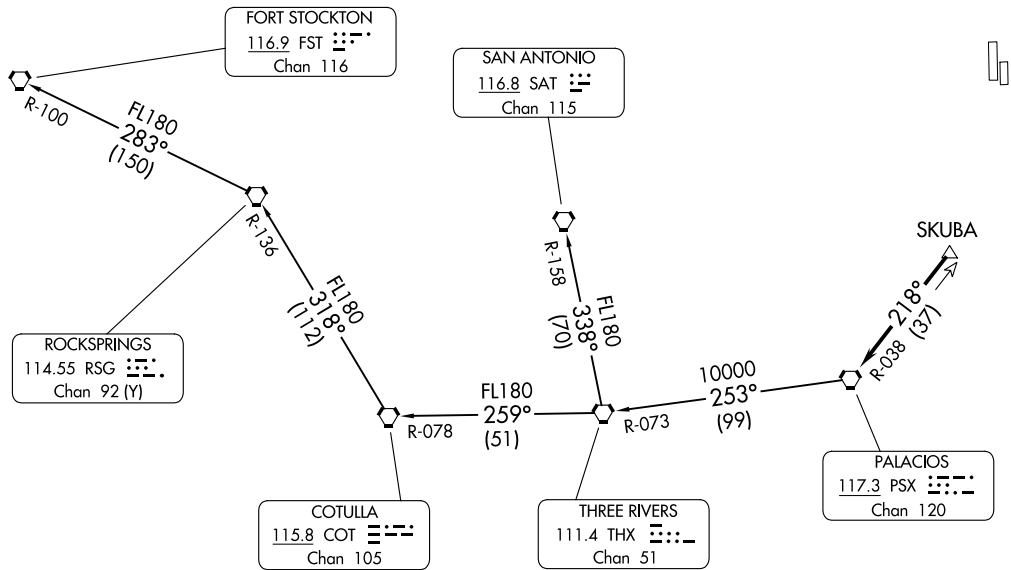
ROCKSPRINGS  
114.55 RSG  
Chan 92 (Y)

COTULLA  
115.8 COT  
Chan 105

THREE RIVERS  
111.4 THX  
Chan 51

PALACIOS  
117.3 PSX  
Chan 120

SKUBA



NOTE: Chart not to scale.

(CONTINUED ON FOLLOWING PAGE)

PALACIOS THREE DEPARTURE  
(PSX3.PSX) 03NOV22

HOUSTON, TEXAS  
DAVID WAYNE HOOKS MEML (DWH)

(PSX3.PSX) 24137  
PALACIOS THREE DEPARTURE

AL-5457 (FAA)  
DAVID WAYNE HOOKS MEML (DWH)  
HOUSTON, TEXAS

# PALACIOS THREE DEPARTURE



## DEPARTURE ROUTE DESCRIPTION

TAKEOFF ALL RUNWAYS: When entering controlled airspace, climb on assigned heading for RADAR vectors to SKUBA. Maintain ATC assigned altitude. Expect filed altitude 10 minutes after departure, thence . . . .

. . . . on PSX R-038 to PSX VORTAC.

FORT STOCKTON TRANSITION (PSX3.FST): From over PSX VORTAC on PSX R-253 and THX R-073 to THX VORTAC, then on THX R-259 and COT R-078 to COT VORTAC, then on COT R-318 and RSG R-136 to RSG VORTAC, then on RSG R-283 and FST R-100 to FST VORTAC.

SAN ANTONIO TRANSITION (PSX3.SAT): From over PSX VORTAC on PSX R-253 and THX R-073 to THX VORTAC, then on SAT R-158 to SAT VORTAC.

SC-5, 31 OCT 2024 to 28 NOV 2024

SC-5, 31 OCT 2024 to 28 NOV 2024