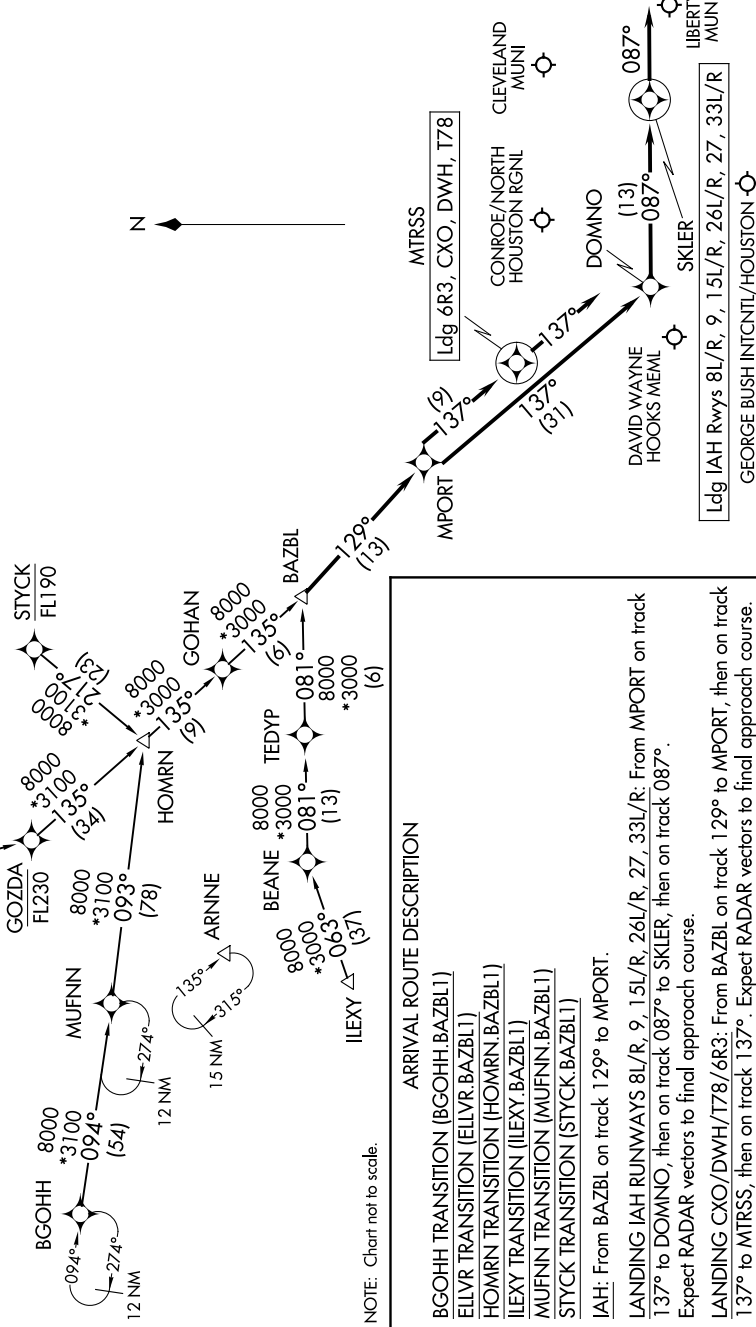


RNAV 1- DME/DME/IRU or GPS. RADAR required.

HOUSTON APP CON  
134.3 360.85  
CXO ATIS  
118.325  
DWH ATIS  
128.375  
IAH D-ATIS  
124.05

NOTE: LANDING IAH: Turboprop and piston aircraft only.  
NOTE: IAH LANDING EAST expect RADAR vectors prior to DOMNO.  
NOTE: MUFNN Transition - Do not file - To be assigned by ATC.  
NOTE: HOMRN Transition - Do not file - To be assigned by ATC.



ARRIVAL ROUTE DESCRIPTION

BGOHH TRANSITION (BGOHH.BAZBL1)  
 ELLVR TRANSITION (ELLVR.BAZBL1)  
 HOMRN TRANSITION (HOMRN.BAZBL1)  
 ILEXY TRANSITION (ILEXY.BAZBL1)  
 MUFNN TRANSITION (MUFNN.BAZBL1)  
 STYCK TRANSITION (STYCK.BAZBL1)

IAH: From BAZBL on track 129° to MPORT.  
 LANDING IAH RUNWAYS 8L/R, 9, 15L/R, 26L/R, 27, 33L/R: From MPORT on track 137° to DOMNO, then on track 087° to SKLER, then on track 087°.  
 Expect RADAR vectors to final approach course.  
 LANDING CXO/DWH/T78/6R3: From BAZBL on track 129° to MPORT, then on track 137° to MITRSS, then on track 137°.

NOTE: Chart not to scale.