

(FLYZA5.FLYZA) 21112

FLYZA FIVE DEPARTURE (RNAV)

GEORGE BUSH INTCNL/HOUSTON (IAH)

AL-5461 (FAA)

HOUSTON, TEXAS

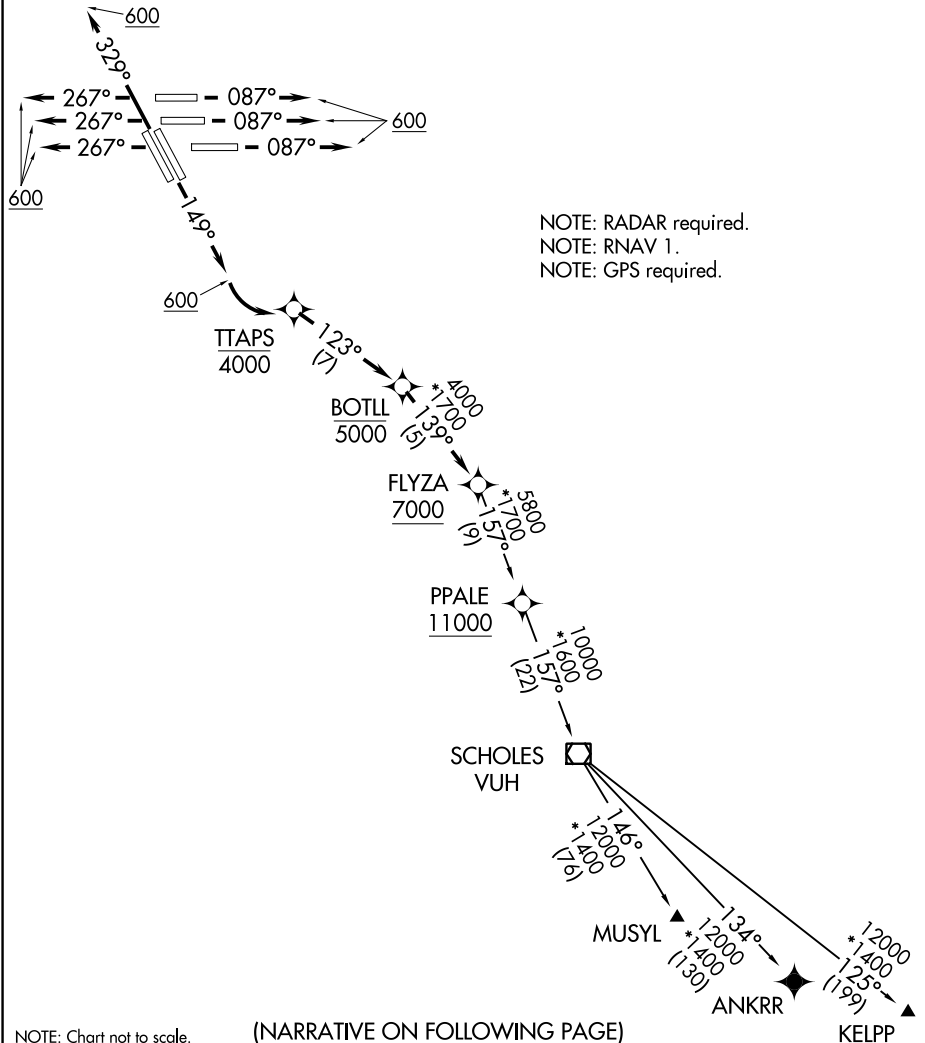
D-ATIS
 124.05
 CLNC DEL
 128.1
 CPDLC
 GND CON
 118.575 (Rwys 8L/R, 26L/R, 9, 27)
 121.7 (Rwys 15L/R, 33L/R)
 HOUSTON TOWER
 120.725 290.2 (Rwys 8L, 26R)
 125.35 290.2 (Rwys 8R, 26L)
 127.3 288.25 (Rwys 15L/R, 33L/R)
 135.15 290.2 (Rwys 9, 27)
 HOUSTON DEP CON
 127.125 269.075

**TOP ALTITUDE:
 16000**

TAKEOFF MINIMUMS

Rwys 8L/R, 9, 15L/R, 26L/R, 27, 33L/R:

Standard with minimum climb of 500' per NM to 800.



NOTE: Chart not to scale.

(NARRATIVE ON FOLLOWING PAGE)

FLYZA FIVE DEPARTURE (RNAV)

(FLYZA5.FLYZA) 15SEP16

HOUSTON, TEXAS

GEORGE BUSH INTCNL/HOUSTON (IAH)

SC-5, 31 OCT 2024 to 28 NOV 2024

SC-5, 31 OCT 2024 to 28 NOV 2024



DEPARTURE ROUTE DESCRIPTION

TAKEOFF RUNWAYS 8L/R, 9: Climb heading 087° to 600, expect RADAR vectors to cross BOTLL at or below 5000, thence

TAKEOFF RUNWAYS 15L/R: Climb heading 149° to 600, then left turn direct to cross TTAPS at or below 4000, then on track 123° to cross BOTLL at or below 5000, thence

TAKEOFF RUNWAYS 26L/R, 27: Climb heading 267° to 600, expect RADAR vectors to cross BOTLL at or below 5000, thence

TAKEOFF RUNWAYS 33L/R: Climb heading 329° to 600, expect RADAR vectors to cross BOTLL at or below 5000, thence

. . . . on track 139° to cross FLYZA at or above 7000, then on (transition). Maintain 16000. Expect filed altitude 10 minutes after departure.

ANKRR TRANSITION (FLYZA5.ANKRR)

KELPP TRANSITION (FLYZA5.KELPP)

MUSYL TRANSITION (FLYZA5.MUSYL)

SC-5, 31 OCT 2024 to 28 NOV 2024

SC-5, 31 OCT 2024 to 28 NOV 2024