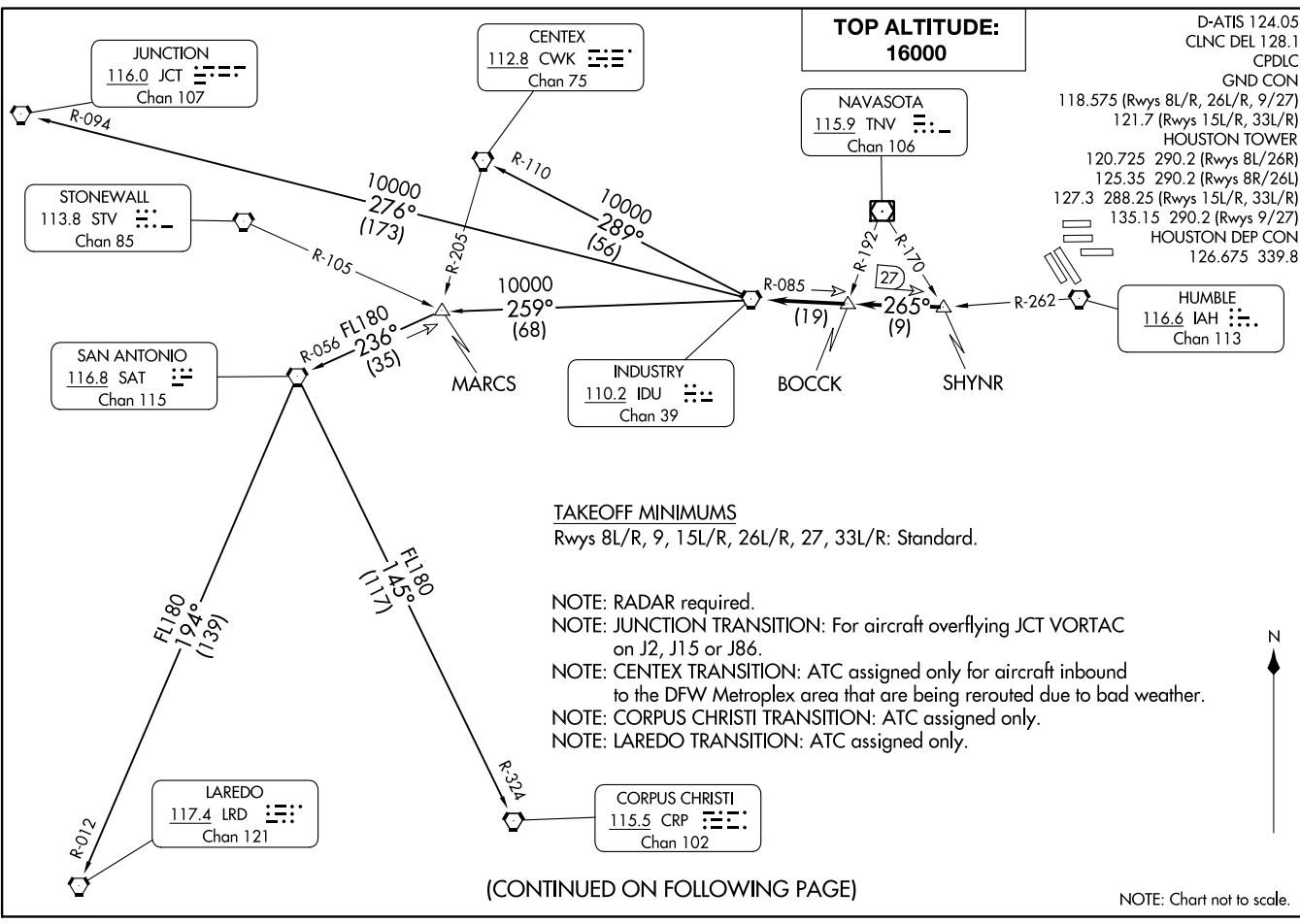


INDUSTRY ONE DEPARTURE
(IDU1, IDU) 070CZ1

HOUSTON, TEXAS
GEORGE BUSH INT/CNTL/HOUSTON (IAH)



INDUSTRY ONE DEPARTURE
(IDU1, IDU) 24137

HOUSTON, TEXAS
GEORGE BUSH INT/CNTL/HOUSTON (IAH)
AL-5461 (FAA)

(CONTINUED ON FOLLOWING PAGE)

NOTE: Chart not to scale.

D-ATIS 124.05
CLNC DEL 128.1
CPDLC
GND CON
118.575 (Rwys 8L/R, 26L/R, 9/27)
121.7 (Rwys 15L/R, 33L/R)
HOUSTON TOWER
120.725 290.2 (Rwys 8L/26R)
125.35 290.2 (Rwys 8R/26L)
127.3 288.25 (Rwys 15L/R, 33L/R)
135.15 290.2 (Rwys 9/27)
HOUSTON DEP CON
126.675 339.8

**TOP ALTITUDE:
16000**

NAVASOTA
115.9 TNV
Chan 106

CENTEX
112.8 CWK
Chan 75

JUNCTION
116.0 JCT
Chan 107

STONEWALL
113.8 STV
Chan 85

SAN ANTONIO
116.8 SAT
Chan 115

INDUSTRY
110.2 IDU
Chan 39

HUMBLE
116.6 IAH
Chan 113

TAKEOFF MINIMUMS

Rwys 8L/R, 9, 15L/R, 26L/R, 27, 33L/R: Standard.

NOTE: RADAR required.

NOTE: JUNCTION TRANSITION: For aircraft overflying JCT VORTAC on J2, J15 or J86.

NOTE: CENTEX TRANSITION: ATC assigned only for aircraft inbound to the DFW Metroplex area that are being rerouted due to bad weather.

NOTE: CORPUS CHRISTI TRANSITION: ATC assigned only.

NOTE: LAREDO TRANSITION: ATC assigned only.





DEPARTURE ROUTE DESCRIPTION

TAKEOFF ALL RUNWAYS: Climb on assigned heading for RADAR vectors to SHYNR INT, maintain 16000. Expect filed altitude 10 minutes after departure, thence

. . . . on IDU R-085 to BOCK INT, then on IDU R-085 to IDU VORTAC.

CENTEX TRANSITION (IDU1.CWK): From over IDU VORTAC on IDU R-289 and CWK R-110 to CWK VORTAC.

CORPUS CHRISTI TRANSITION (IDU1.CRP): From over IDU VORTAC on IDU R-259 to MARCS INT, then on SAT R-056 to SAT VORTAC, then on SAT R-145 and CRP R-324 to CRP VORTAC.

JUNCTION TRANSITION (IDU1.JCT): From over IDU VORTAC on IDU R-276 and JCT R-094 to JCT VORTAC.

LAREDO TRANSITION (IDU1.LRD): From over IDU VORTAC on IDU R-259 to MARCS INT, then on SAT R-056 to SAT VORTAC, then on SAT R-194 and LRD R-012 to LRD VORTAC.

SC-5, 31 OCT 2024 to 28 NOV 2024

SC-5, 31 OCT 2024 to 28 NOV 2024