

WAAS CH 61231 W36A	APP CRS 002°	Rwy Idg TDZE 648 Apt Elev 686	5422 648 686
--	------------------------	---	---

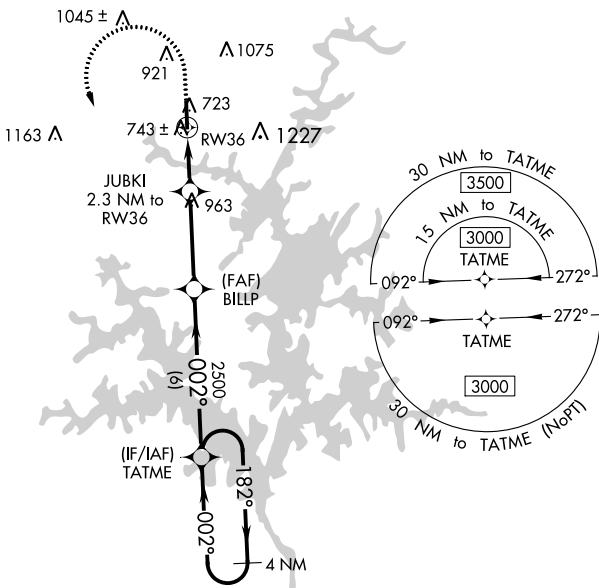
RNAV (GPS) RWY 36

THOMAS C RUSSELL FLD (ALX)

⚠ For uncompensated Baro-VNAV systems, LNAV/VNAV NA below -16°C (4°F) or above 54°C (130°F). DME/DME RNP-0.3 NA.

⚠ MISSED APPROACH: Climb to 1100 then climbing left turn to 3000 direct TATME and hold.

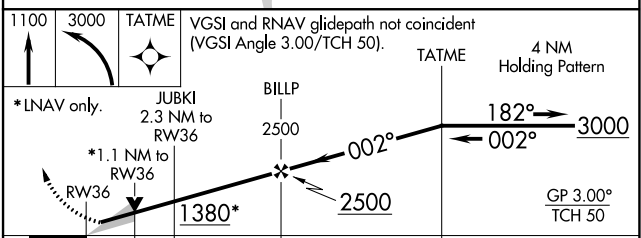
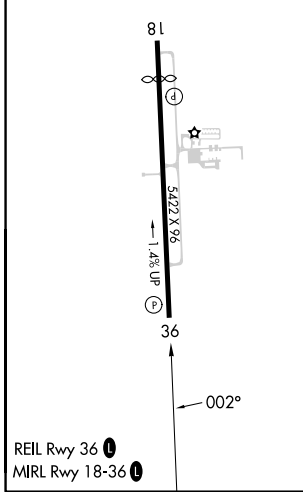
AWOS-3PT 118.325	MONTGOMERY APP CON ★ 121.2 269.05	UNICOM 122.7 (CTAF) ①
----------------------------	---	---------------------------------



SE-4, 31 OCT 2024 to 28 NOV 2024

SE-4, 31 OCT 2024 to 28 NOV 2024

ELEV 686	TDZE 648
-----------------	-----------------



CATEGORY	A	B	C	D
LPV DA		898-1	250 (300-1)	
LNAV/VNAV DA		940-1½		292 (300-1½)
LNAV MDA	1000-1	352 (400-1)	1000-1½	352 (400-1½)
C CIRCLING	1180-1 494 (500-1)	1240-1 554 (600-1)	1540-2½ 854 (900-2½)	1540-2¾ 854 (900-2¾)