

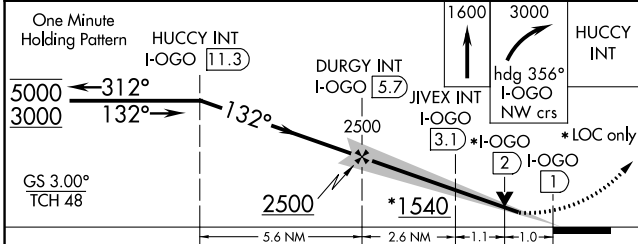
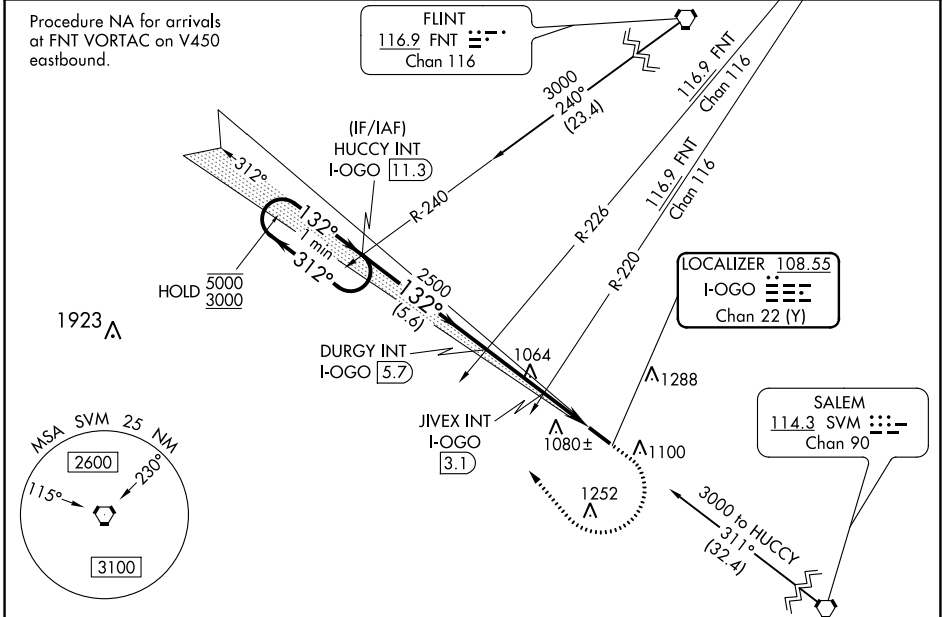
LOC/DME I-OGO 108.55 Chan 22 (Y)	APP CRS 132°	Rwy ldg 5002 TDZE 962 Apt Elev 962
--	------------------------	---

ILS or LOC RWY 13

LIVINGSTON COUNTY SPENCER J HARDY (OZW)

<p>▼ For inop ALS, increase LOC Cat C and D visibility to 1½ SM, and JIVEX fix minimums S-13 Cat C and D visibility to 1 SM.</p> <p>▲ NA</p>	<p>MALSRL</p>	<p>MISSED APPROACH: Climb to 1600 then climbing right turn to 3000 heading 356° and I-OGO NW course to HUCCY INT/ I-OGO 11.3 DME and hold.</p>
--	---------------	--

AWOS-3 118.875	DETROIT APP CON 132.35 284.0	CLNC DEL 121.725 (GCO)	UNICOM 123.0 (CTAF) 0
--------------------------	--	----------------------------------	---------------------------------



CATEGORY	A	B	C	D
S-ILS 13	1162-½		200 (200-½)	
S-LOC 13	1540-½ 578 (600-½)		1540-1¼ 578 (600-1¼)	
CIRCLING	1540-1 578 (600-1)		1600-1¾ 638 (700-1¾) 1600-2 638 (700-2)	
JIVEX FIX MINIMUMS (DUAL VOR RECEIVERS OR DME REQUIRED)				
S-LOC 13	1320-½ 358 (400-½)		1320-5/8 358 (400-5/8)	
CIRCLING	1400-1 438 (500-1) 1420-1 458 (500-1)		1600-1¾ 638 (700-1¾) 1600-2 638 (700-2)	

ELEV 962 TDZE 962

HUCCY INT

132°

AS

5002 X 100

0.4% UP

HIRL Rwy 13-31 0

REIL Rwy 31 0

FAF to MAP 4.7 NM

Knots	60	90	120	150	180
Min:Sec	4:42	3:08	2:21	1:53	1:34

EC-1, 31 OCT 2024 to 28 NOV 2024

EC-1, 31 OCT 2024 to 28 NOV 2024

ILS or LOC RWY 13