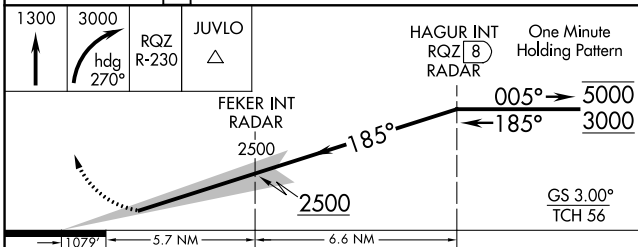
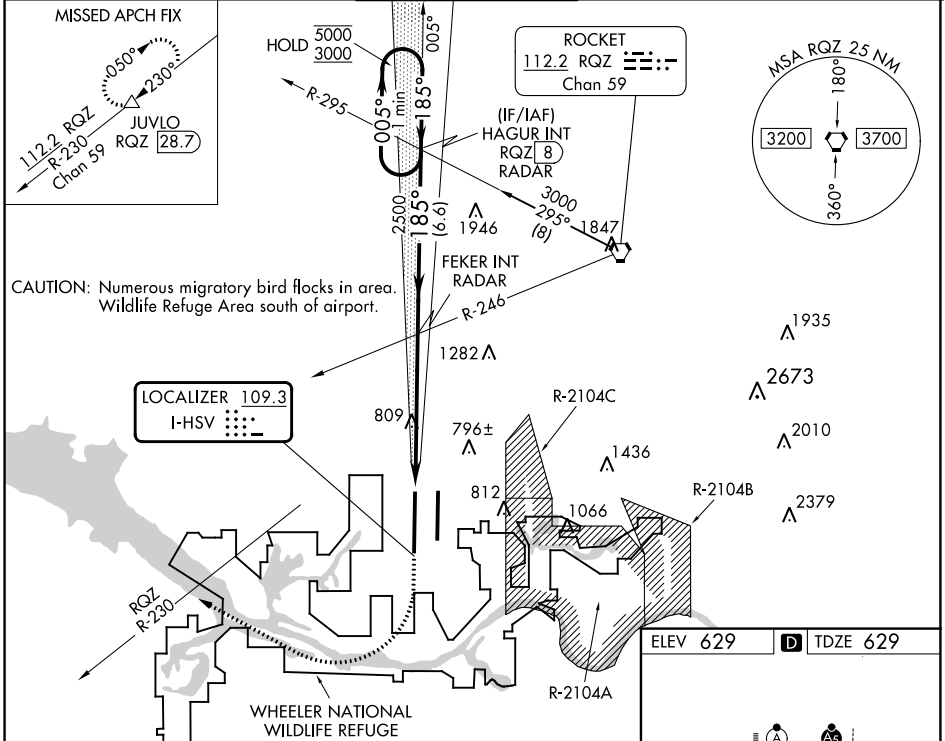


LOC I-HSV 109.3	APP CRS 185°	Rwy ldg 12600 TDZE 629 Apt Elev 629
---------------------------	------------------------	--

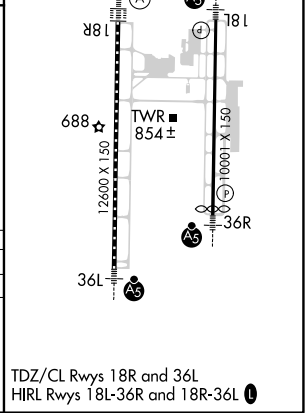
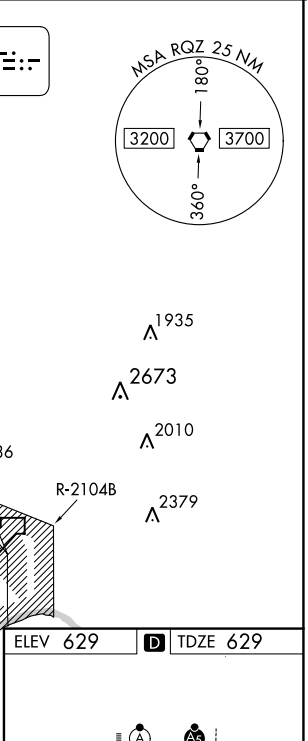
ILS RWY 18R (CAT II)
HUNTSVILLE INTL-CARL T JONES FLD (HSV)

DME required. RADAR required for procedure entry.		ALSIF-2	MISSED APPROACH: Climb to 1300 then climbing right turn to 3000 on heading 270° and RQZ R-230 to JUVLO/RQZ 28.7 DME and hold.		
Simultaneous approach authorized. DME from RQZ VORTAC. DME use requires simultaneous reception of I-HSV and RQZ DME.					
ATIS 121.25	HUNTSVILLE APP CON * 125.6 354.1	HUNTSVILLE TOWER * 127.6 (CTAF) 0 350.35	GND CON 121.9 269.525	CLNC DEL 120.35	UNICOM 122.95



1300	3000	RQZ R-230	JUVLO	HAGUR INT RQZ (B) RADAR	One Minute Holding Pattern
↑	hdg 270°		△		
				2500	2500
				185°	185°
				5.7 NM	6.6 NM

CATEGORY	A	B	C	D
S-ILS 18R	RA 105/12 100 DA 729			
CATEGORY II ILS - SPECIAL AIRCREW & AIRCRAFT CERTIFICATION REQUIRED				



SE-4, 31 OCT 2024 to 28 NOV 2024

SE-4, 31 OCT 2024 to 28 NOV 2024

TDZ/CL Rwys 18R and 36L
HIRL Rwys 18L-36R and 18R-36L