

WAAS CH <b>78033</b> <b>W15A</b>	APP CRS <b>146°</b>	Rwy Idg TDZE <b>1139</b> Apt Elev <b>1160</b>	<b>4667</b>
--	------------------------	---	-------------

# RNAV (GPS) RWY 15

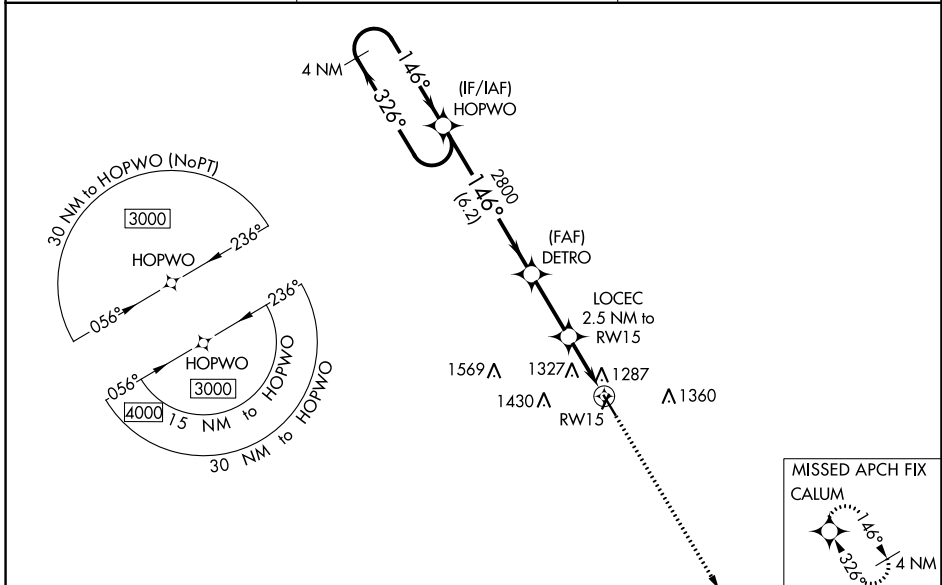
BOONE MUNI (BNW)

RNP APCH.

▼ Baro-VNAV and VDP NA when using Ames Muni altimeter setting. For uncompensated Baro-VNAV Systems, LNAV/VNAV NA below -22°C or above 54°C. Rwy 15 helicopter visibility reduction below 1 SM NA. When local altimeter setting not received, use Ames Muni altimeter setting and increase all DA 54 feet and all MDA 60 feet. Increase LNAV/VNAV all Cats visibility to 1 7/8 mile. Circling NA to Rws 2 and 20.

▲ MISSED APPROACH: Climb to 4000 direct CALUM and hold.

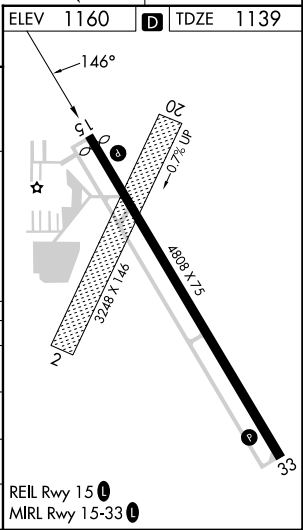
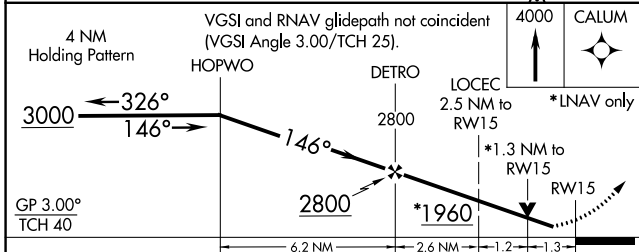
AWOS-3 <b>120.925</b>	DES MOINES APP CON <b>123.9 307.15</b>	UNICOM <b>123.0 (CTAF) 0</b>
--------------------------	---	---------------------------------



NC-3, 31 OCT 2024 to 28 NOV 2024

NC-3, 31 OCT 2024 to 28 NOV 2024

ELEV 1160	TDZE 1139
-----------	-----------



CATEGORY	A	B	C	D
LPV DA	1401-1	262 (300-1)		NA
LNAV/VNAV DA	1643-1 3/4	504 (500-1 3/4)		NA
LNAV MDA	1580-1	441 (500-1)		NA
CIRCLING	1620-1 460 (500-1)	1640-1 480 (500-1)		NA