

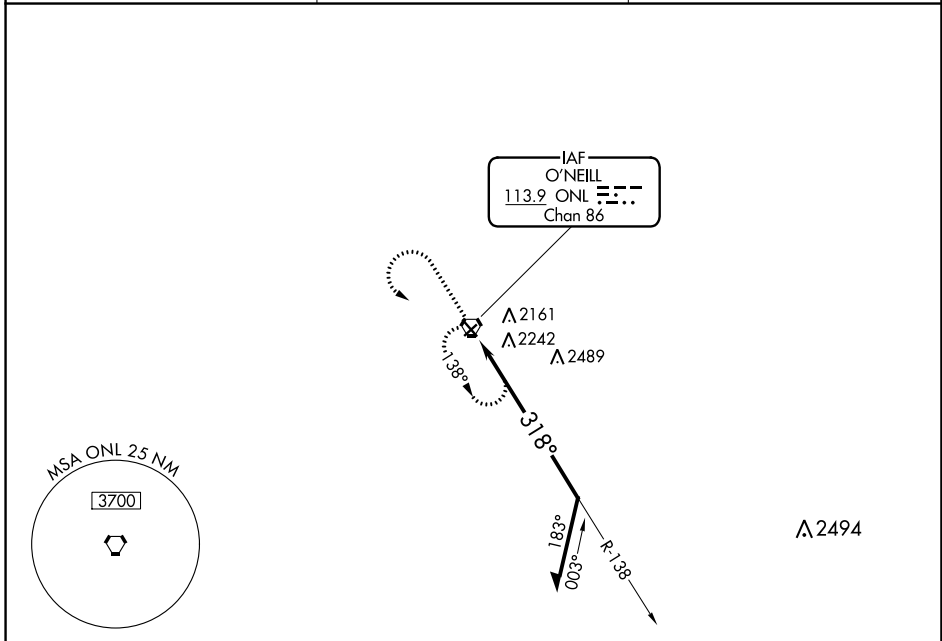
VORTAC ONL <b>113.9</b> Chan 86	APP CRS <b>318°</b>	Rwy Idg TDZE Apt Elev	<b>4408</b> <b>2032</b> <b>2034</b>
---------------------------------------	------------------------	-----------------------------	---

# VOR RWY 31

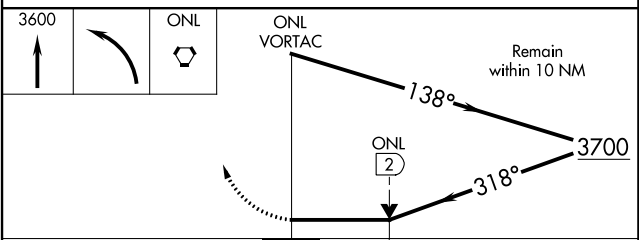
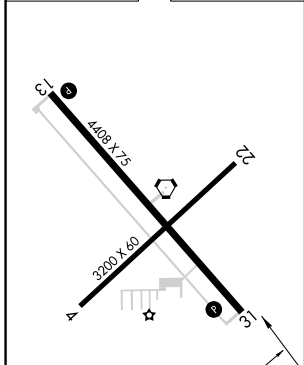
THE O'NEILL MUNI-JOHN L BAKER FLD (ONL)

Night landing: Rwy 4, 22 NA.	MISSED APPROACH: Climb to 3600 then left turn direct ONL VORTAC and hold.
------------------------------	---

AWOS-3 <b>121.125</b>	MINNEAPOLIS CENTER <b>128.0 257.95</b>	UNICOM <b>122.8 (CTAF) 0</b>
--------------------------	---	---------------------------------



ELEV 2034	TDZE 2032
-----------	-----------



CATEGORY	A	B	C	D
S-31	2600-1	568 (600-1)	2600-1 $\frac{5}{8}$	568 (600-1 $\frac{5}{8}$ )
CIRCLING	2600-1	566 (600-1)	2680-1 $\frac{3}{4}$ 646 (700-1 $\frac{3}{4}$ )	2840-2 $\frac{1}{2}$ 806 (900-2 $\frac{1}{2}$ )

NC-2, 31 OCT 2024 to 28 NOV 2024

NC-2, 31 OCT 2024 to 28 NOV 2024