


WAAS CH 42605 W05A	APP CRS 044°	Rwy Idg 5370 TDZE 1275 Apt Elev 1277
--	------------------------	---

RNAV (GPS) RWY 5

LEE GILMER MEML (GVL)

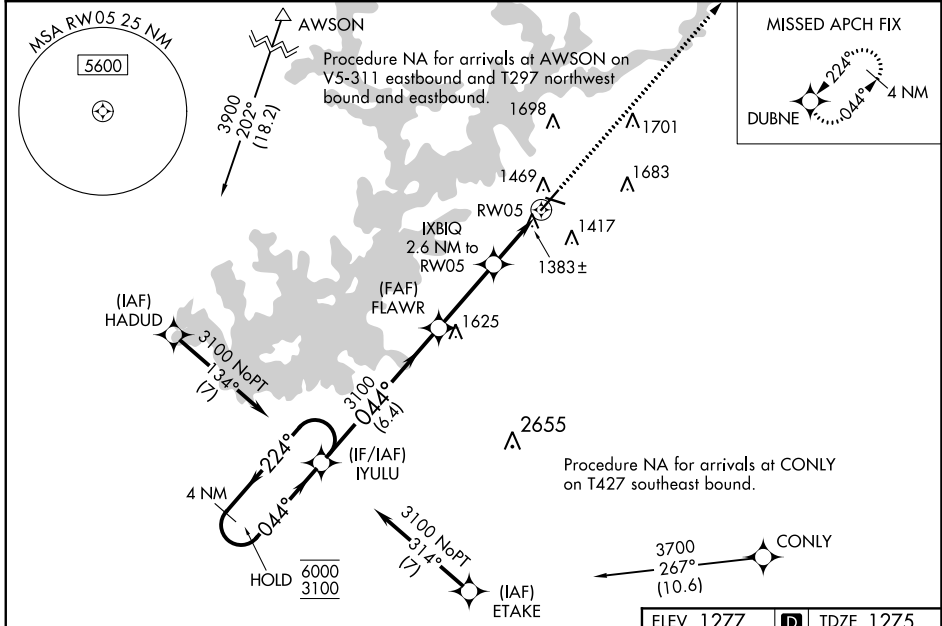
RNP APCH - GPS.


⚠ Circling to Rwy 11, 29 NA at night. For uncompensated Baro-VNAV systems, LNAV/VNAV NA below -6°C or above 54°C. For inop ALS, increase LNAV/VNAV all Cats visibility to ½ SM, increase LNAV Cats C and D visibility to 1 SM.

MALSRL 

MISSED APPROACH: Climb to 3500 direct DUBNE and hold.

ASOS 126.475	ATLANTA APP CON* 132.475 291.1	UNICOM 123.075 (CTAF) 
------------------------	--	---




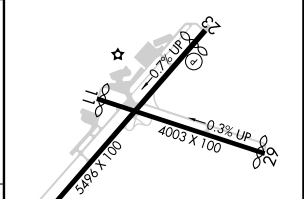
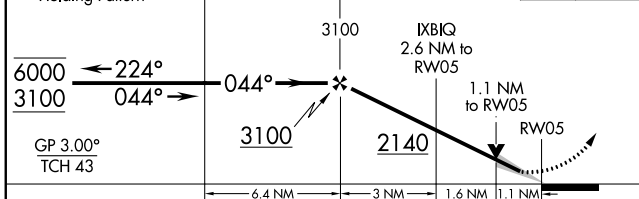
ELEV 1277  TDZE 1275

VGSI and RNAV glidepath not coincident (VGSI Angle 3.00/TCH 30).

4 NM Holding Pattern

GP 3.00° TCH 43

3500 DUBNE 



CATEGORY	A	B	C	D
LPV DA		1475-½	200 (200-½)	
LNAV/VNAV DA		1551-½	276 (300-½)	
LNAV MDA	1640-½	365 (400-½)	1640-⅝	365 (400-⅝)
CIRCLING	1780-1 503 (600-1)	2000-1 723 (800-1)	2000-2 723 (800-2)	2020-2½ 743 (800-2½)

HIRL Rwy 5-23 

SE-4, 31 OCT 2024 to 28 NOV 2024

SE-4, 31 OCT 2024 to 28 NOV 2024