

VOR/DME AHN 116.95 Chan 116 (Y)	APP CRS 199°	Rwy Idg TDZE Apt Elev N/A 694
---	------------------------	--

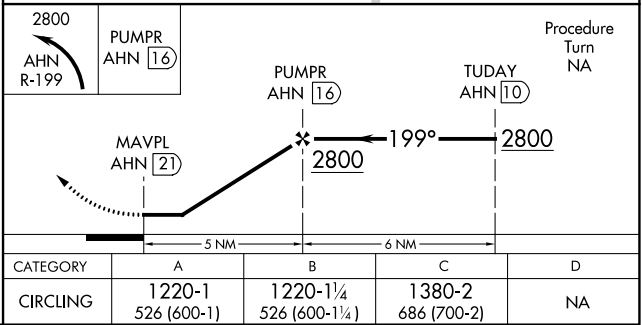
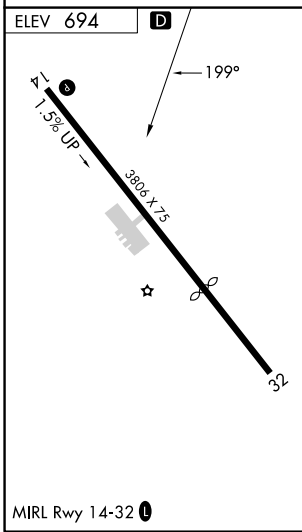
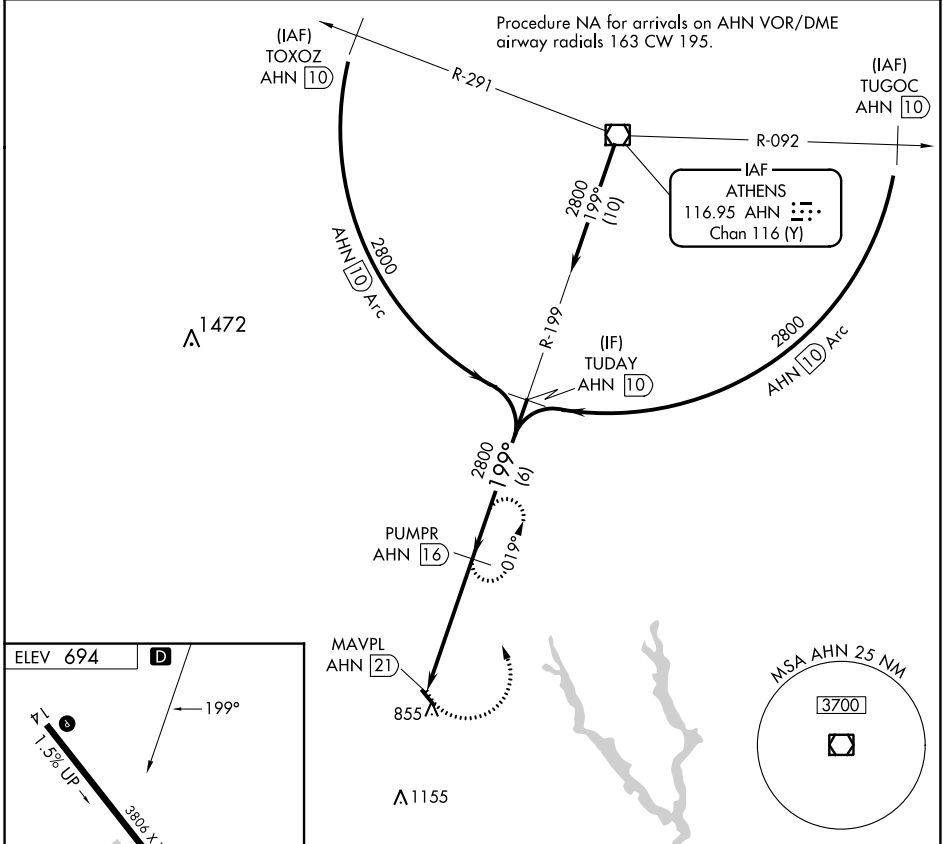
VOR/DME-A

MADISON MUNI (52A)

NA Procedure NA at night. Use Athens altimeter setting. Visibility reduction by helicopters NA.

MISSED APPROACH: Climbing left turn to 2800 on AHN VOR/DME R-199 to PUMPR/AHN 16 DME and hold.

AHN ASOS 132.875	ATLANTA APP CON ★ 132.475 291.1	UNICOM 122.8 (CTAF) U
----------------------------	---	--



SE-4, 31 OCT 2024 to 28 NOV 2024

SE-4, 31 OCT 2024 to 28 NOV 2024