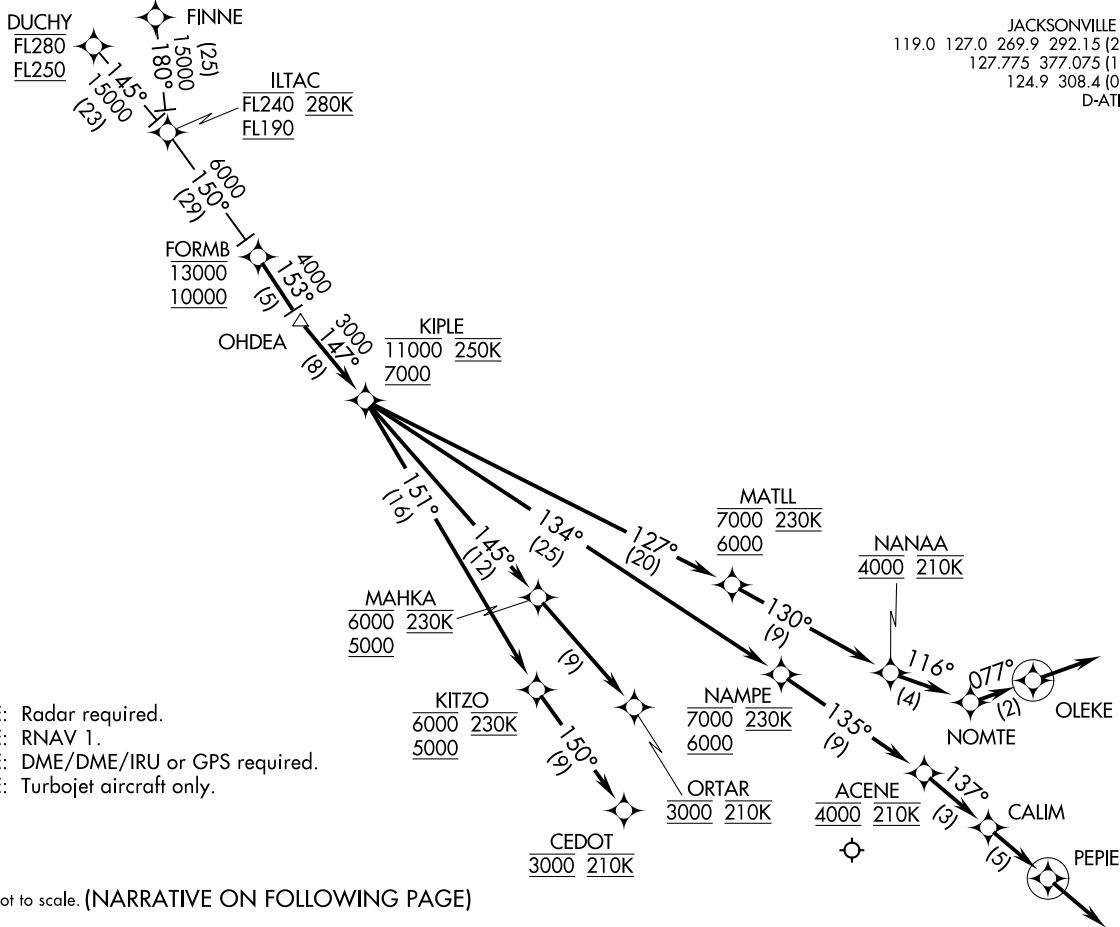


JACKSONVILLE APP CON
119.0 127.0 269.9 292.15 (270°-090°)
127.775 377.075 (181°-269°)
124.9 308.4 (091°-180°)
D-ATIS 125.85



- NOTE: Radar required.
- NOTE: RNAV 1.
- NOTE: DME/DME/IRU or GPS required.
- NOTE: Turbojet aircraft only.

NOTE: Chart not to scale. (NARRATIVE ON FOLLOWING PAGE)

OHDEA ONE ARRIVAL (RNAV)
(OHDEA, OHDEA1) 17OCT13

JACKSONVILLE, FLORIDA
JACKSONVILLE INTL (JAX)

(OHDEA, OHDEA1) 18088
OHDEA ONE ARRIVAL (RNAV)
AL-5570 (FAA)

JACKSONVILLE INTL (JAX)
JACKSONVILLE, FLORIDA

ARRIVAL ROUTE DESCRIPTION

DUCHY TRANSITION (DUCHY.OHDEA1)

FINNE TRANSITION (FINNE.OHDEA1)

From FORMB on track 153° to OHDEA, then on track 147° to cross KIPLE between 7000 and 11000 and at 250K.

LANDING RWY 8: From KIPLE on track 151° to cross KITZO between 5000 and 6000 and at 230K, then on track 150° to cross CEDOT at 3000 and at 210K. Expect radar vectors to RNAV (RNP)/Visual approach as assigned by ATC.

LANDING RWY 14: From KIPLE on track 145° to cross MAHKA between 5000 and 6000 and at 230K, then on track 145° to cross ORTAR at 3000 and at 210K. Expect radar vectors to RNAV (RNP)/Visual approach as assigned by ATC.

LANDING RWY 26: From KIPLE on track 127° to cross MATLL between 6000 and 7000 and at 230K, then on track 130° to cross NANAA at 4000 and at 210K, then on track 116° to NOMTE, then on track 077° to OLEKE, then on 077° track. Expect radar vectors to final approach course.

LANDING RWY 32: From KIPLE on track 134° to cross NAMPE between 6000 and 7000 and at 230K, then on track 135° to cross ACENE at 4000 and at 210K, then on track 137° to CALIM, then on track 137° to PEPIE, then on 137° track. Expect radar vectors to final approach course.

SE-3, 31 OCT 2024 to 28 NOV 2024

SE-3, 31 OCT 2024 to 28 NOV 2024