

WAAS CH 97423 W06A	APP CRS 064°	Rwy Idg TDZE Apt Elev	5301 822 823
--	------------------------	-----------------------------	---

RNAV (GPS) RWY 6

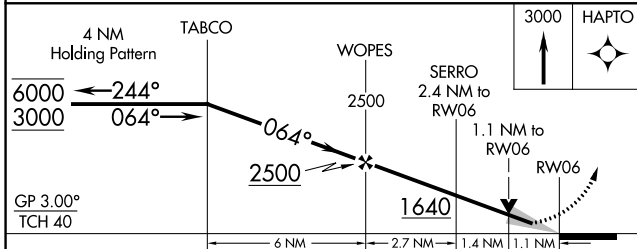
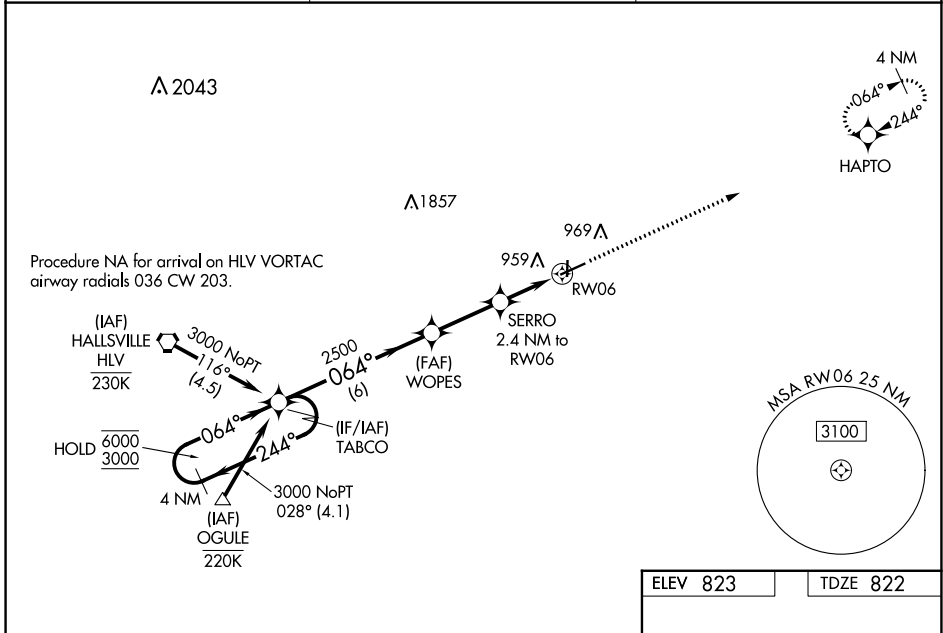
MEXICO MEML (MYJ)

RNP APCH - GPS.

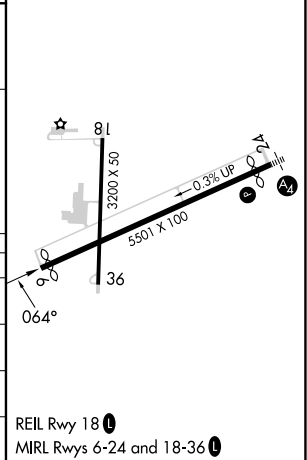
NA Baro-VNAV and VDP NA when using Columbia altimeter setting. For uncompensated Baro-VNAV systems, LNAV/VNAV NA below -16°C or above 54°C. When local altimeter setting not received, use Columbia altimeter setting; increase LPV DA to 1146 feet and visibilities ¼ SM; increase LNAV/VNAV DA to 1167 feet and visibilities ½ SM; increase all MDAs 80 feet and LNAV visibility Cat C ¾ SM and Circling visibility Cat C ½ SM.

MISSED APPROACH: Climb to 3000 direct HAPTO and hold.

AWOS-3PT 120.575	MIZU APP CON 124.375	CTAF 122.90
----------------------------	--------------------------------	-----------------------



ELEV 823	TDZE 822
----------	----------



CATEGORY	A	B	C	D
LPV DA		1072-¾	250 (300-¾)	NA
LNAV/VNAV DA		1093-7/8	271 (300-7/8)	NA
LNAV MDA		1200-1	378 (400-1)	NA
CIRCLING	1280-1	457 (500-1)	1420-1½ 597 (600-1½)	NA

NC-3, 31 OCT 2024 to 28 NOV 2024

NC-3, 31 OCT 2024 to 28 NOV 2024