

WAAS CH 53336 W27A	APP CRS 274°	Rwy Idg TDZE 36 Apt Elev 38	4002
--	------------------------	---	-------------

RNAV (GPS) RWY 27

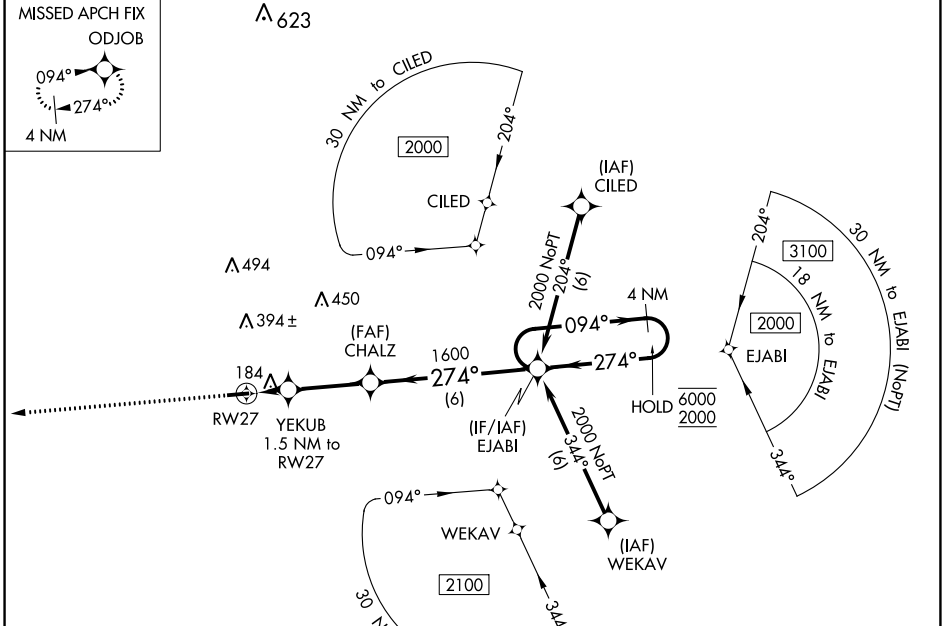
WALLACE-PENDER (ACZ)

RNP APCH - GPS.

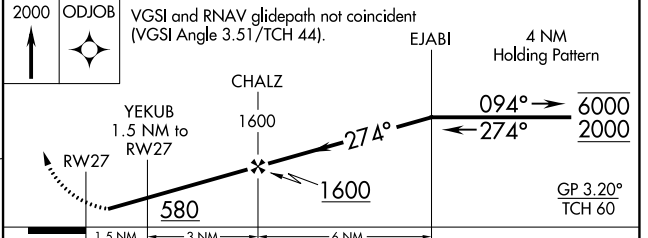
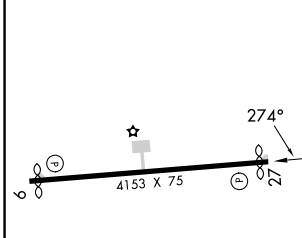
⚠ Circling Rwy 9 NA at night. Rwy 27 helicopter visibility reduction below 3/4 SM NA.
⚠ NA Baro-VNAV NA. When local altimeter setting not received, use Kenansville altimeter setting.

MISSED APPROACH: Climb to 2000 direct ODJOB and hold.

AWOS-3P 121.07	WILMINGTON APP CON★ 135.75 317.425	UNICOM 122.8 (CTAF) 0
--------------------------	--	---------------------------------



ELEV 38	TDZE 36
---------	---------



CATEGORY	A	B	C	D
LPV DA	406-1 370 (400-1)			NA
LNAV/VNAV DA	599-1 5/4 563 (600-1 3/4)			NA
LNAV MDA	560-1 524 (600-1)		560-1 1/2 524 (600-1 1/2)	
C CIRCLING	620-1 582 (600-1)		820-2 1/4 782 (800-2 1/4) 820-2 1/2 782 (800-2 1/2)	

MIRL Rwy 9-27 0

SE-2, 31 OCT 2024 to 28 NOV 2024

SE-2, 31 OCT 2024 to 28 NOV 2024