

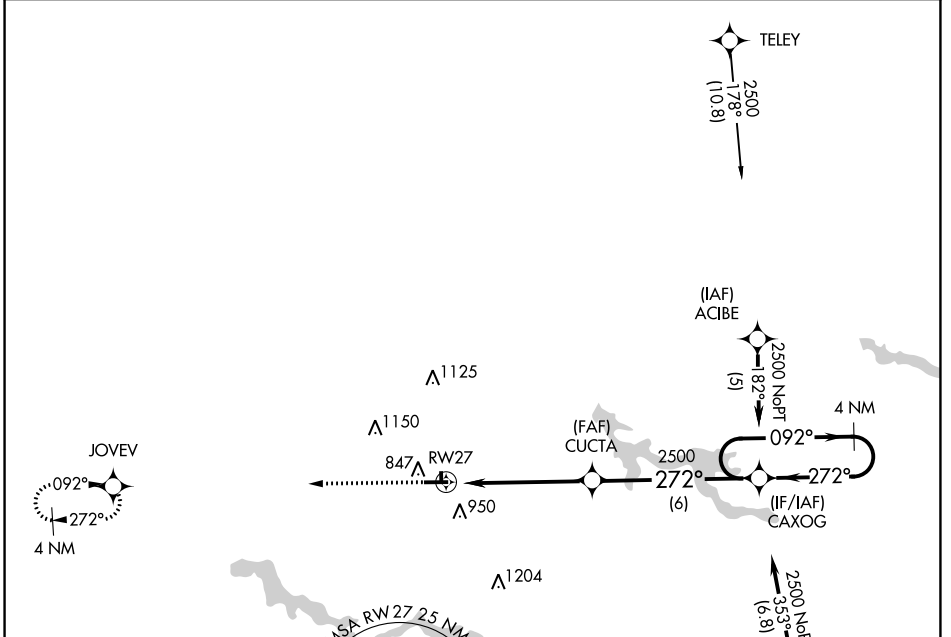
APP CRS 272°	Rwy Idg 4401
	TDZE 796
	Apt Elev 796

RNAV (GPS) RWY 27

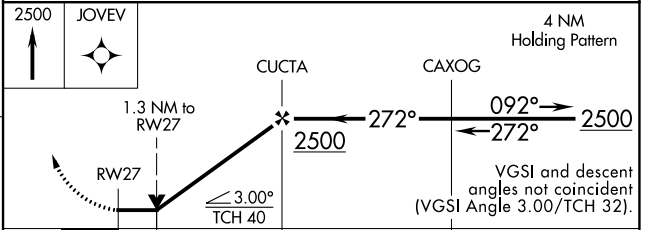
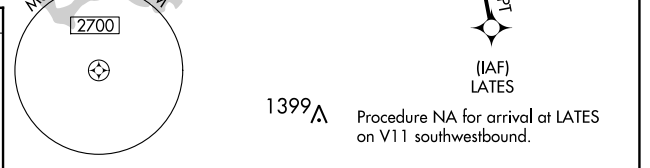
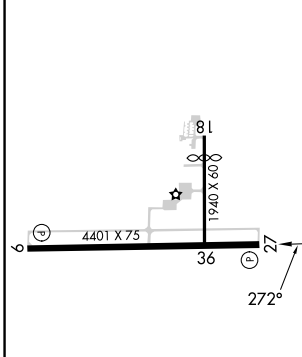
WABASH MUNI (IWH)

▼ DME/DME RNP-0.3 NA. Night landing: Rwy 18, 36 NA. Helicopter visibility reduction below 3/4 SM NA. Use Kokomo altimeter setting; when not received, use Marion altimeter setting.	MISSED APPROACH: Climb to 2500 direct JOVEV WP and hold.
--	--

OKK AWOS-3PT 128.675	GRISSOM APP CON * 121.05 338.275	UNICOM 122.8 (CTAF) 📶
--------------------------------	--	--



ELEV 796	TDZE 796
----------	----------



CATEGORY	A	B	C	D
LNAV MDA	1280-1	484 (500-1)	1280-1 ³ / ₈ 484 (500-1 ³ / ₈)	NA
C CIRCLING	1300-1 504 (600-1)	1440-1 644 (700-1)	1560-2 ¹ / ₄ 764 (800-2 ¹ / ₄)	NA

LIRL Rwy 18-36
MIRL Rwy 9-27 **📶**
REIL Rwy 9 and 27 **📶**

EC-2, 31 OCT 2024 to 28 NOV 2024

EC-2, 31 OCT 2024 to 28 NOV 2024