

RNAV (GPS) RWY 7

VIDALIA RGNL (VDI)

WAAS CH 66037 W07A	APP CRS 069°	Rwy Idg TDZE Apt Elev	6002 274 274
--	------------------------	-----------------------------	---

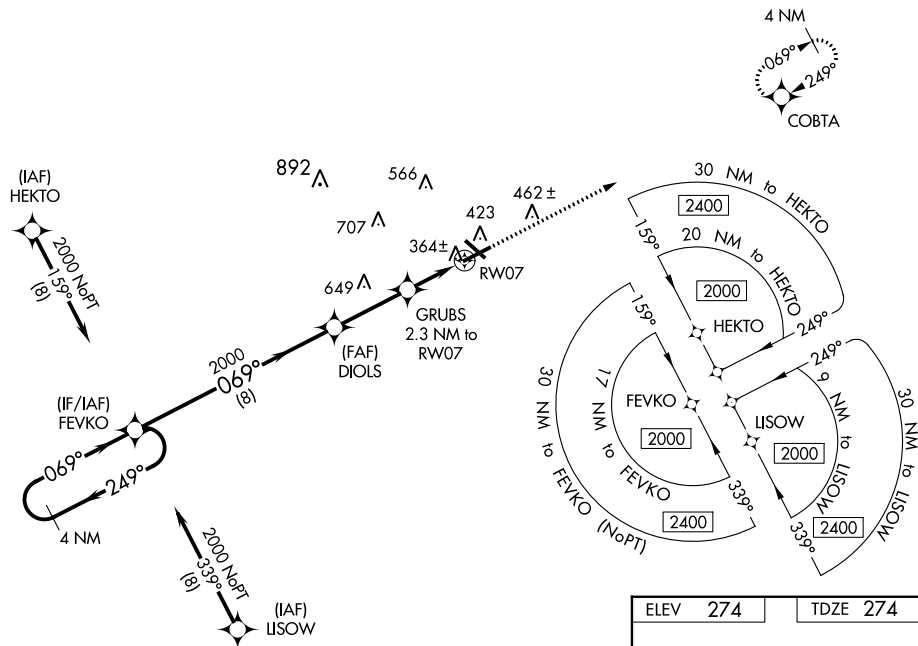
⚠ For uncompensated Baro-VNAV systems, LNAV/VNAV NA below -15°C (5°F) or above 54°C (130°F). DME/DME RNP-0.3 NA. When local altimeter setting not received, use Baxley altimeter setting and increase all DA 77 feet and all MDA 80 feet, increase LPV and LNAV/VNAV all Cats visibility ¼ mile, LNAV and Circling Cats C/D visibility ¼ mile. VDP and Baro-VNAV NA when using Baxley altimeter setting. Night Landing: Rwy 32 NA. Helicopter visibility reduction below ¼ SM NA.

MISSED APPROACH:
Climb to 2000 direct COBTA and hold.

AWOS-3
119.925

JACKSONVILLE CENTER
127.575 269.025

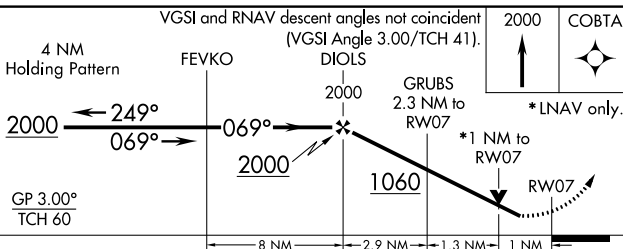
UNICOM
122.8 (CTAF)



SE-4, 31 OCT 2024 to 28 NOV 2024

SE-4, 31 OCT 2024 to 28 NOV 2024

ELEV 274	TDZE 274
-----------------	-----------------



CATEGORY	A	B	C	D
LPV DA		524-¾	250 (300-¾)	
LNAV/VNAV DA		527-¾	253 (300-¾)	
LNAV MDA		620-1	346 (400-1)	
C CIRCLING	740-1	466 (500-1)	920-1¾ 646 (700-1¾)	1060-2½ 786 (800-2½)

