

# SKYEE ONE DEPARTURE (RNAV)

AL-5612 (FAA)

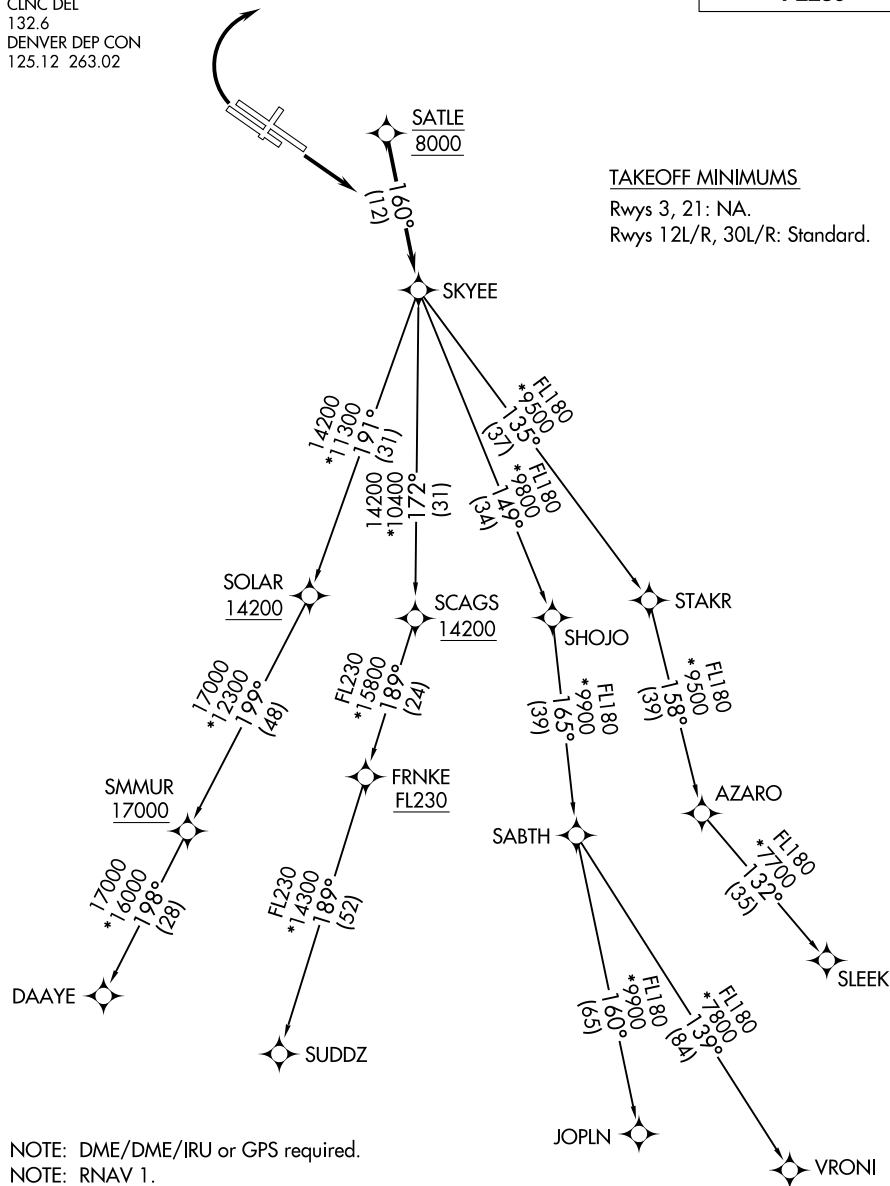
ROCKY MOUNTAIN METRO (BJC)  
DENVER, COLORADO

ATIS  
126.25  
CLNC DEL  
132.6  
DENVER DEP CON  
125.12 263.02

**TOP ALTITUDE:  
FL230**

### TAKEOFF MINIMUMS

Rwys 3, 21: NA.  
Rwys 12L/R, 30L/R: Standard.



NOTE: DME/DME/IRU or GPS required.  
NOTE: RNAV 1.  
NOTE: Turbojets only.  
NOTE: RADAR required.

NOTE: Chart not to scale.

(NARRATIVE ON FOLLOWING PAGE)

# SKYEE ONE DEPARTURE (RNAV)

(SKYEE1 .SKYEE) 26MAR20

DENVER, COLORADO  
ROCKY MOUNTAIN METRO (BJC)

SW-1, 31 OCT 2024 to 28 NOV 2024

SW-1, 31 OCT 2024 to 28 NOV 2024



DEPARTURE ROUTE DESCRIPTION

TAKEOFF RUNWAYS 12L/R: Climb on a heading between 350° CW 150° as assigned by ATC. Thence. . . .

TAKEOFF RUNWAYS 30L/R: Climbing right turn on a heading between 350° CW 113° as assigned by ATC. Thence. . . .

. . . .expect RADAR vectors to cross SATLE at 8000 then on track 160° to SKYEE then on (transition) maintain FL230 or filed lower altitude. Expect higher filed altitude ten minutes after departure.

DAAYE TRANSITION (SKYEE1 .DAAYE)

JOPLN TRANSITION (SKYEE1 .JOPLN)

SLEEK TRANSITION (SKYEE1 .SLEEK)

SUDDZ TRANSITION (SKYEE1 .SUDDZ)

VRONI TRANSITION (SKYEE1 .VRONI)

SW-1, 31 OCT 2024 to 28 NOV 2024

SW-1, 31 OCT 2024 to 28 NOV 2024