

WAAS CH 53527 W28A	APP CRS 275°	Rwy Idg 5001 TDZE 682 Apt Elev 684
--	------------------------	---

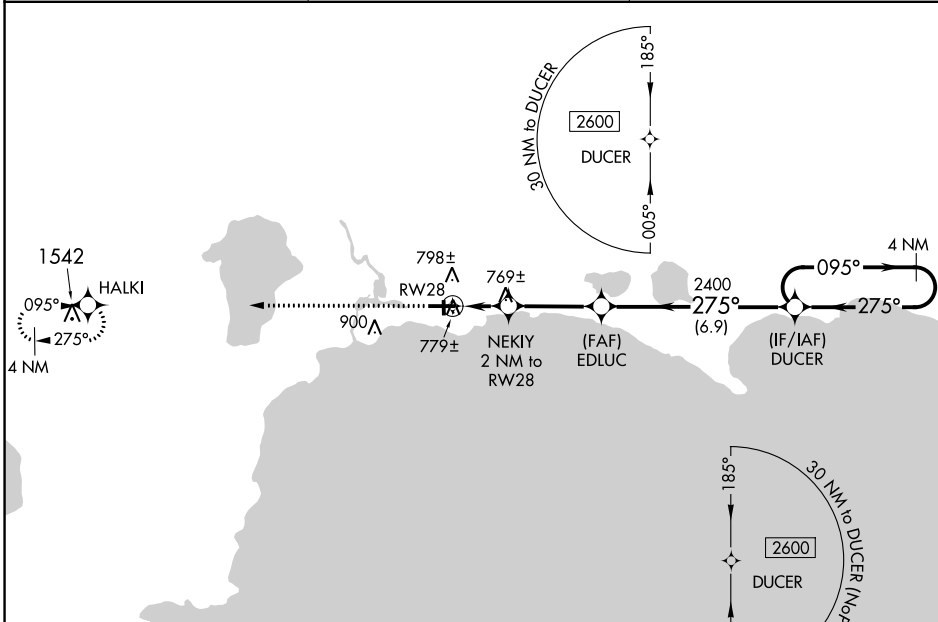
RNAV (GPS) RWY 28

SCHOOLCRAFT COUNTY (ISQ)

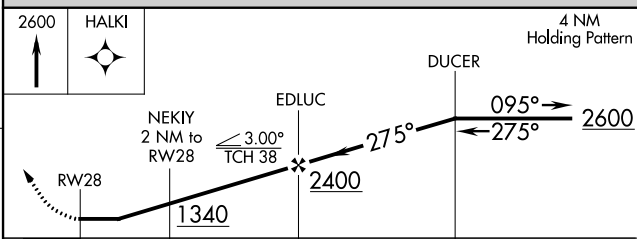
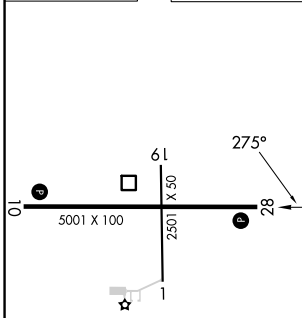
⚠ When local altimeter setting not received, use Beaver Island altimeter setting and increase all MDA 80 feet, increase LP Cat C and D and Circling Cat D visibility ¼ SM, LNAV Cat C and D visibility ⅓ SM, Circling Cat C visibility ½ SM. When VGSi inop, Straight-In/Circling Rwy 28 procedure NA at night. DME/DME RNP-0.3 NA. Visibility reduction by helicopters NA. Circling to Rwy 1/19 NA at night.

MISSED APPROACH:
Climb to 2600 direct HALKI and hold.

AWOS-3 118.775	MINNEAPOLIS APP CON 134.6 354.05	UNICOM 122.8 (CTAF) 0
--------------------------	--	---------------------------------



ELEV 684	TDZE 682
-----------------	-----------------



CATEGORY	A	B	C	D
LP MDA		1020-1	338 (400-1)	
LNAV MDA		1040-1	358 (400-1)	
CIRCLING	1120-1 436 (500-1)	1140-1 456 (500-1)	1280-1½ 596 (600-1½)	1300-2 616 (700-2)

REIL Rwy 28 0
MIRL Rwy 10-28 0

EC-1, 31 OCT 2024 to 28 NOV 2024

EC-1, 31 OCT 2024 to 28 NOV 2024