

WAAS CH <b>82531</b> <b>W09A</b>	APP CRS <b>089°</b>	Rwy Idg TDZE Apt Elev	<b>5100</b> <b>706</b> <b>706</b>
--	------------------------	-----------------------------	---

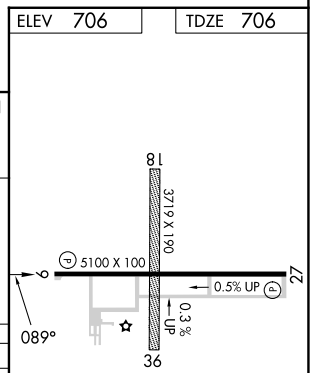
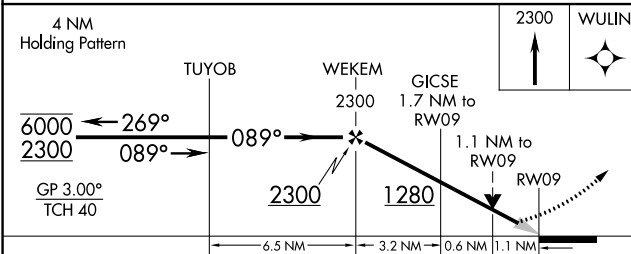
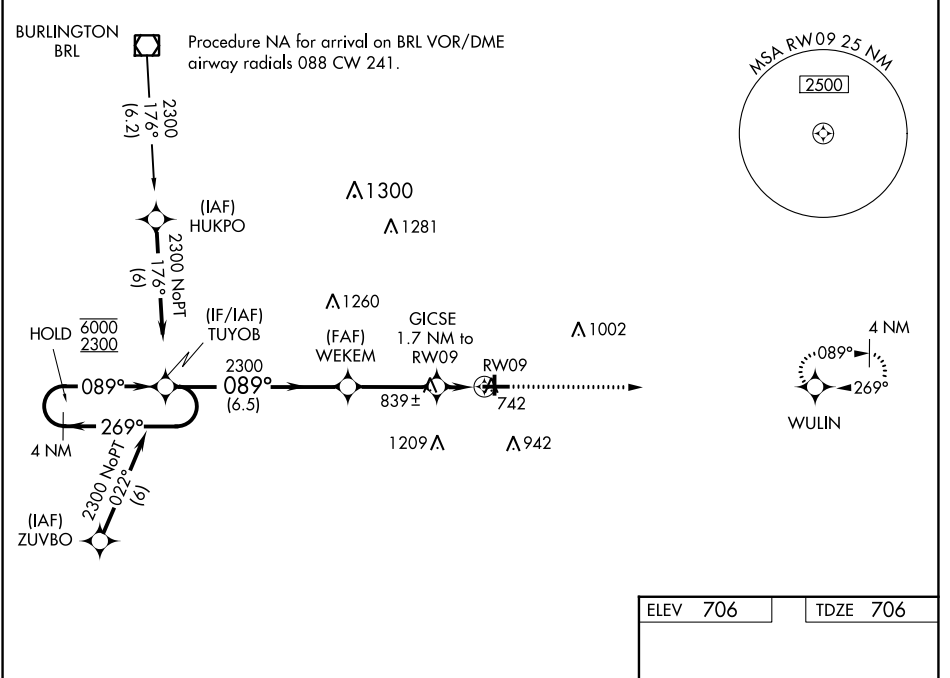
**RNAV (GPS) RWY 9**  
MACOMB MUNI (MQB)

RNP APCH - GPS.

**⚠** Circling NA to Rwy's 18 and 36. Baro-VNAV and VDP NA when using Burlington IA altimeter setting. For uncompensated Baro-VNAV systems, LNAV/VNAV NA below -16°C or above 54°C. When local altimeter setting not received, use Burlington IA altimeter setting; increase LPV DA to 969 feet and LNAV/VNAV DA to 1173 feet; increase all MDA 80 feet and visibility Cats C and D ¼ SM.

**⚠** MISSED APPROACH: Climb to 2300 direct WULIN and hold.

AWOS-3 <b>119.025</b>	CHICAGO CENTER <b>135.6 316.1</b>	UNICOM <b>122.8 (CTAF)</b>
--------------------------	--------------------------------------	-------------------------------



CATEGORY	A	B	C	D
LPV DA		906-1	200 (200-1)	
LNAV/VNAV DA		1110-1 <sup>3</sup> / <sub>8</sub>	404 (500-1 <sup>3</sup> / <sub>8</sub> )	
LNAV MDA	1100-1	394 (400-1)	1100-1 <sup>1</sup> / <sub>8</sub>	394 (400-1 <sup>1</sup> / <sub>8</sub> )
CIRCLING	1120-1 414 (500-1)	1260-1 554 (600-1)	1520-2 <sup>1</sup> / <sub>2</sub> 814 (900-2 <sup>1</sup> / <sub>2</sub> )	1520-2 <sup>3</sup> / <sub>4</sub> 814 (900-2 <sup>3</sup> / <sub>4</sub> )

REIL Rwy's 9 and 27  
HIRL Rwy 9-27

EC-3, 31 OCT 2024 to 28 NOV 2024

EC-3, 31 OCT 2024 to 28 NOV 2024