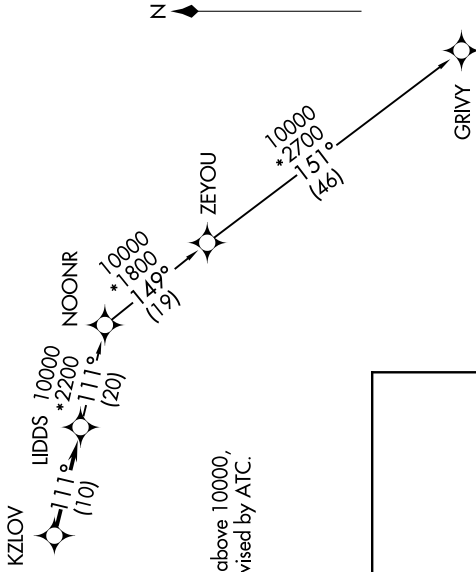
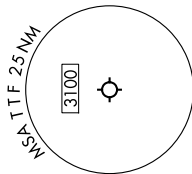


EC-1, 31 OCT 2024 to 28 NOV 2024

AWOS-3  
119.075  
CTAF  
122.7  
DETROIT DEP CON  
134.3 284.0

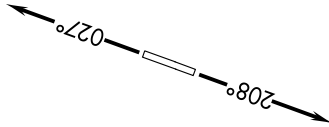
RNAV 1 - DME/DME/IRU or GPS.  
RADAR required.

**TOP ALTITUDE:  
ASSIGNED BY ATC**



TAKEOFF MINIMUMS:  
Rwys 3, 21: Standard.

NOTE: Turbojet departures at/above 10000,  
maintain 280K until advised by ATC.



DEPARTURE ROUTE DESCRIPTION

TAKEOFF RUNWAY 3: Climb on heading 027° or as assigned by ATC, thence....  
 TAKEOFF RUNWAY 21: Climb on heading 208° or as assigned by ATC, thence....  
 ....for RADAR vectors to KZLOV, then on track 111° to LIDDS, then on (transition).  
 Maintain ATC assigned altitude, expect filed altitude 10 minutes after departure.

GRIVY TRANSITION (LIDDS3.GRIVY):

NOTE: Chart not to scale.

EC-1, 31 OCT 2024 to 28 NOV 2024