

WAAS CH 86707 W21A	APP CRS 208°	Rwy Idg TDZE 616 Apt Elev 616	4997
--	------------------------	---	-------------

RNAV (GPS) RWY 21

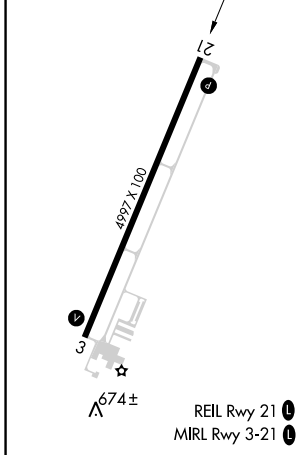
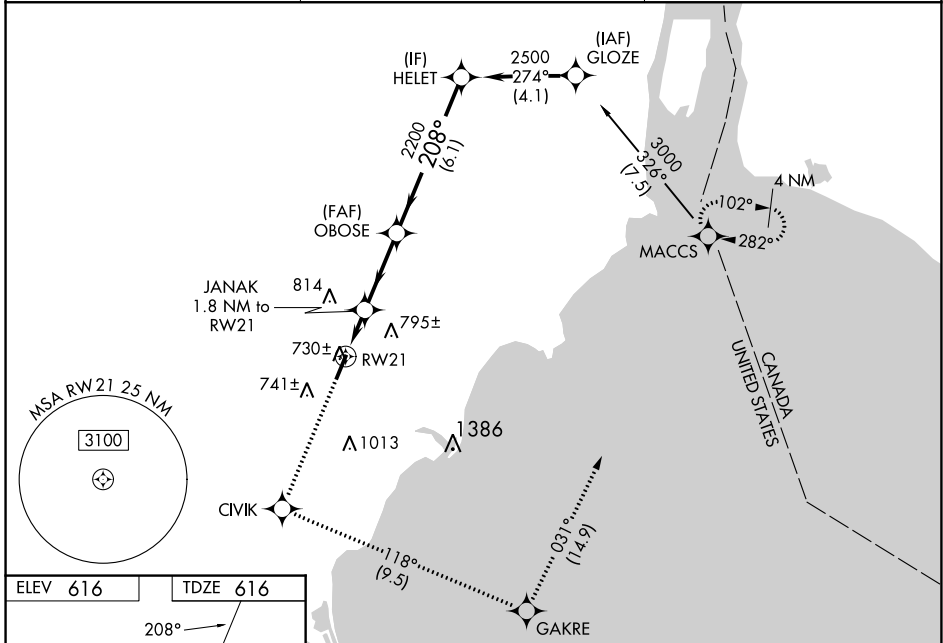
CUSTER (TTF)

RNP APCH - GPS.

⚠ For uncompensated Baro-VNAV systems, LNAV/VNAV NA below -16°C or above 47°C. When local altimeter setting not received, use Detroit Metro Wayne County altimeter setting: increase LPV DA to 1011 feet; increase LNAV/VNAV DA 1054 feet; increase all MDAs 60 feet and visibility LNAV Cat C and Circling Cat C/D ¼ SM. Baro-VNAV and VDP NA when using Detroit Metro Wayne County altimeter setting. Circling to Rwy 3 NA at night.

MISSED APPROACH:
Climb to 3000 direct CIVIK and on track 118° to GAKRE and on track 031° to MACCS and hold.

AWOS-3 119.075	DETROIT APP CON 134.3 363.2	UNICOM 122.7 (CTAF) 0
--------------------------	---------------------------------------	---------------------------------



ELEV 616	TDZE 616	3000 CIVIK				GAKRE		MACCS		VGSI and RNAV glidepath not coincident (VGSI Angle 3.50/TCH 49).		HELET
		↑	tr 118°	tr 031°								
		*LNAV only.		JANAK 1.8 NM to RW21		2200		2200		2500		
		*0.9 NM RW21 to RW21		*1220						GP 3.00° TCH 42		
		0.9 NM	0.9 NM	3 NM		6.1 NM						
CATEGORY		A		B		C		D				
LPV DA		966-1¼		350 (400-1¼)								
LNAV/VNAV DA		1009-1½		393 (400-1½)								
LNAV MDA		980-1		364 (400-1)		980-1¼		364 (400-1¼)				
CIRCLING		1120-1 504 (600-1)		1180-1 564 (600-1)		1380-2¼ 764 (800-2¼)		1380-2½ 764 (800-2½)				

EC-1, 31 OCT 2024 to 28 NOV 2024

EC-1, 31 OCT 2024 to 28 NOV 2024